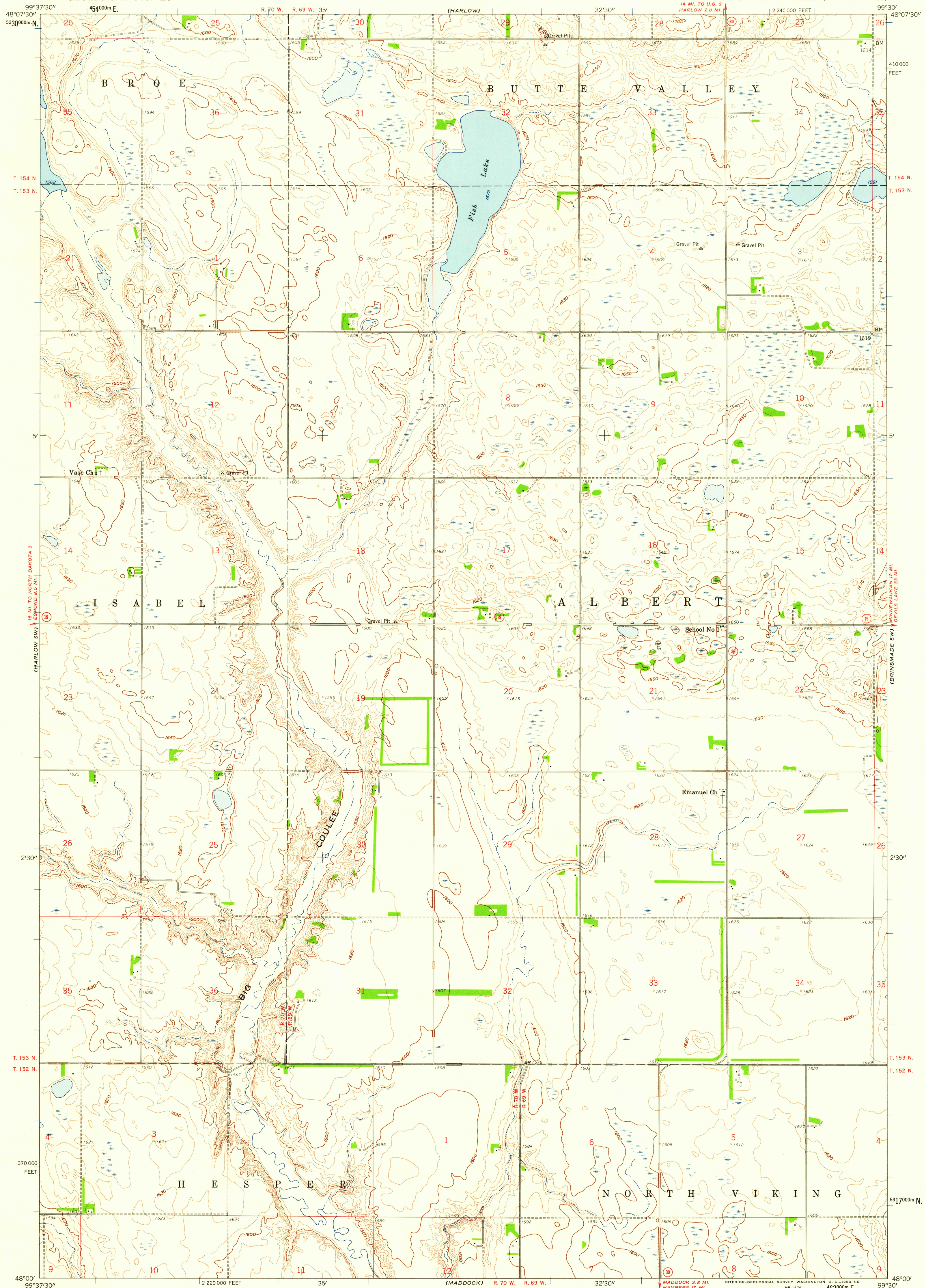


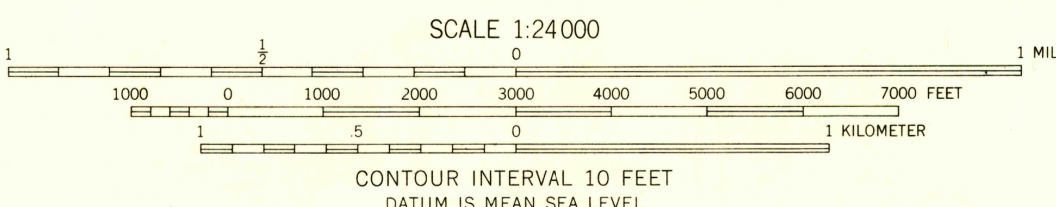
UNITED STATES  
DEPARTMENT OF THE INTERIOR  
GEOLOGICAL SURVEY

HARLOW SE QUADRANGLE  
NORTH DAKOTA—BENSON CO.  
7.5 MINUTE SERIES (TOPOGRAPHIC)



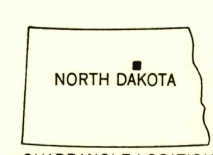
Maped, edited, and published by the Geological Survey as part of the Department of the Interior program for the development of the Missouri River Basin  
Control by USGS and USC&GS  
Topography from aerial photographs by photogrammetric methods  
Aerial photographs taken 1956. Field check 1958  
Polyconic projection. 1927 North American datum  
10,000-foot grid based on North Dakota coordinate system, north zone  
1000-meter Universal Transverse Mercator grid ticks, zone 14, shown in blue

TRUE NORTH  
MAGNETIC NORTH  
APPROXIMATE MEAN DECLINATION, 1958



THIS MAP COMPLIES WITH NATIONAL MAP ACCURACY STANDARDS  
FOR SALE BY U. S. GEOLOGICAL SURVEY, DENVER 25, COLORADO OR WASHINGTON 25, D. C.  
AND BY THE STATE WATER CONSERVATION COMMISSION, BISMARCK, NORTH DAKOTA  
A FOLDER DESCRIBING TOPOGRAPHIC MAPS AND SYMBOLS IS AVAILABLE ON REQUEST

USGS  
Topographic Division  
ROAD CLASSIFICATION  
Light-duty ——— Unimproved dirt ———  
○ State Route



HARLOW SE, N. DAK.  
N4800—W9930/7.5  
1958

U.S.G.S.  
FILE COPY  
TOPOGRAPHIC DIVISION

FEB 11 1960

2010