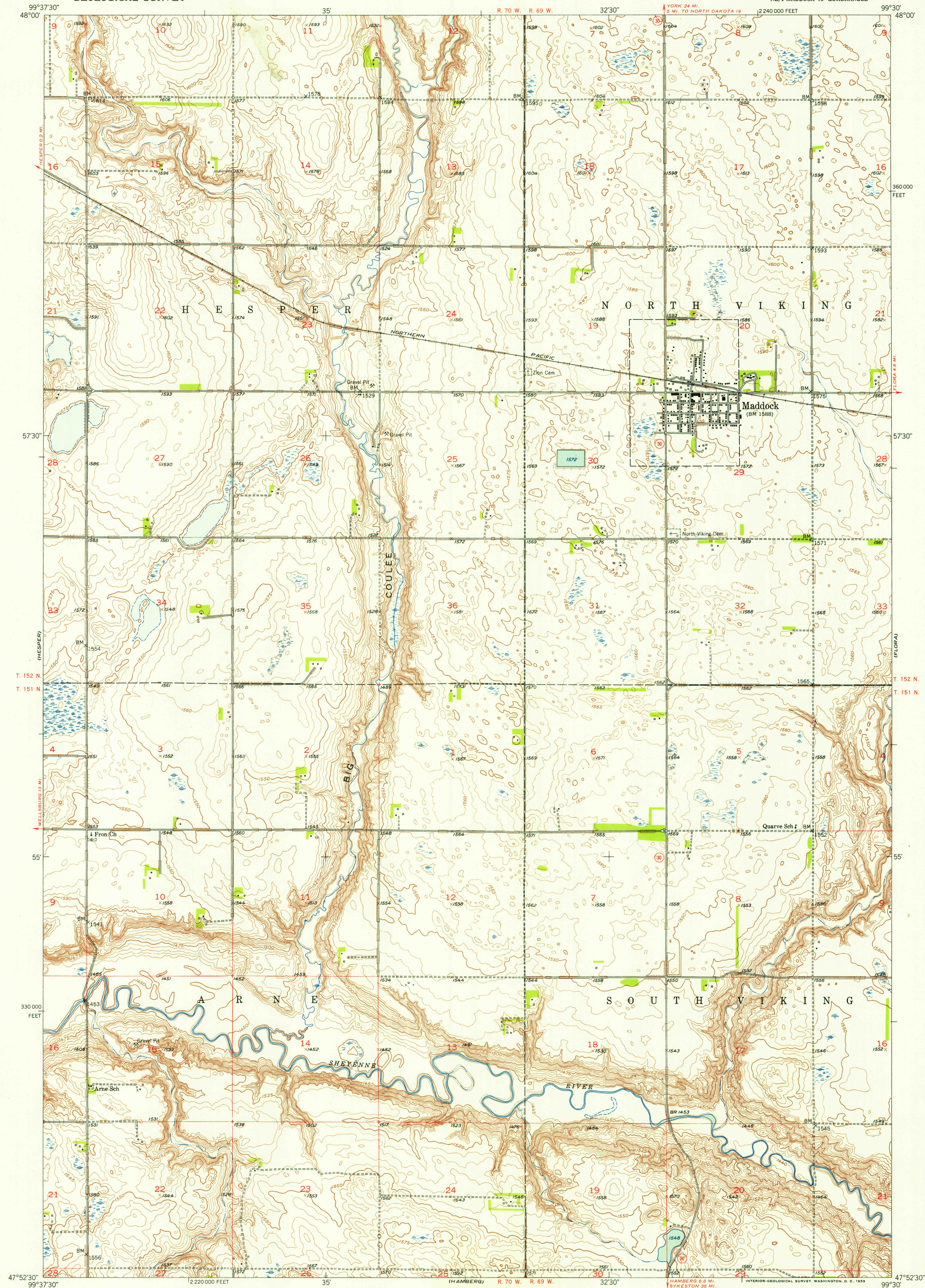
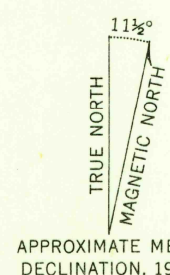


UNITED STATES
DEPARTMENT OF THE INTERIOR
GEOLOGICAL SURVEY

MADDOCK QUADRANGLE
NORTH DAKOTA-BENSON CO.
7.5 MINUTE SERIES (TOPOGRAPHIC)
NE/4 MADDOCK 15' QUADRANGLE



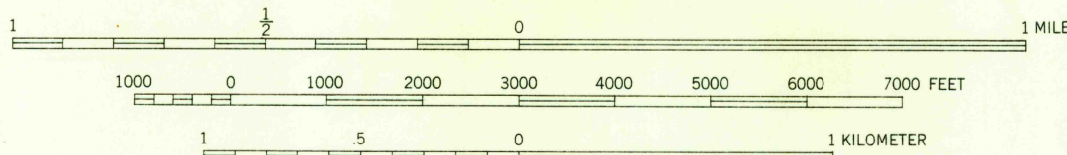
Mapped, edited, and published by the Geological Survey
as part of the Department of the Interior program
for the development of the Missouri River Basin
Control by USGS and USC&GS
Culture and drainage in part compiled from aerial photographs
taken 1941. Topography by plane-table surveys 1951
Polyconic projection. 1927 North American datum
10,000-foot grid based on North Dakota coordinate system,
north zone



APPROXIMATE MEAN
DECLINATION, 1951

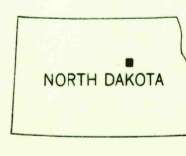
THIS MAP COMPLIES WITH NATIONAL MAP ACCURACY STANDARDS
FOR SALE BY U. S. GEOLOGICAL SURVEY, FEDERAL CENTER, DENVER, COLORADO OR WASHINGTON 25, D. C.
AND BY THE STATE WATER CONSERVATION COMMISSION, BISMARCK, NORTH DAKOTA
A FOLDER DESCRIBING TOPOGRAPHIC MAPS AND SYMBOLS IS AVAILABLE ON REQUEST

SCALE 1:24000



CONTOUR INTERVAL 5 FEET
DATUM IS MEAN SEA LEVEL

USGS
Historical File
Topographic Division



QUADRANGLE LOCATION

ROAD CLASSIFICATION
Heavy-duty 4 LANE 16 LANE Light-duty
Medium-duty 4 LANE 16 LANE Unimproved dirt
U. S. Route State Route

MADDOCK, N. DAK.
NE/4 MADDOCK 15' QUADRANGLE
N4752.5-W9930/7.5

1951

APR 4 1953

2630