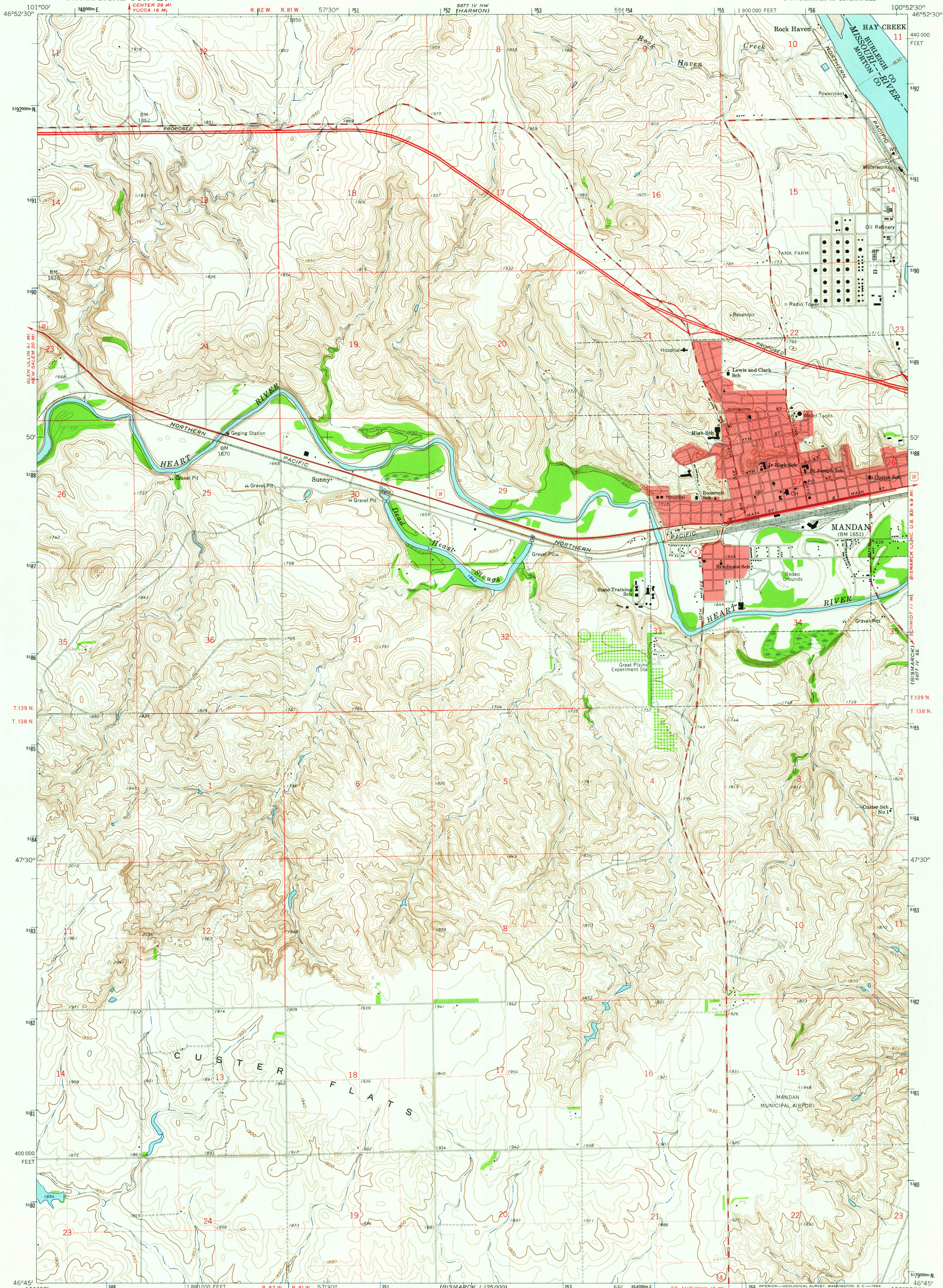


UNITED STATES
DEPARTMENT OF THE INTERIOR
GEOLOGICAL SURVEY

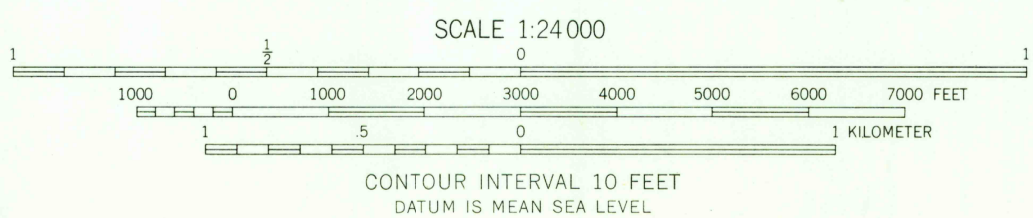
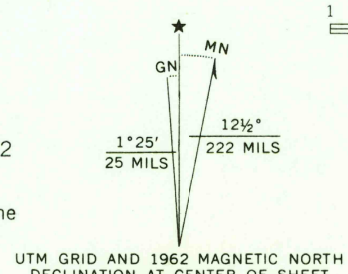
MANDAN QUADRANGLE
NORTH DAKOTA
7.5 MINUTE SERIES (TOPOGRAPHIC)
SW 4 BISMARCK 15 QUADRANGLE



Mapped, edited, and published by the Geological Survey in cooperation with State of North Dakota, Water Conservation Commission
Control by USGS and USC&GS

Planimetry by photogrammetric methods from aerial photographs taken 1948. Topography by planetable surveys 1949. Revised 1962
Polyconic projection. 1927 North American datum
10,000-foot grid based on North Dakota coordinate system, south zone
1000-meter Universal Transverse Mercator grid ticks, zone 14, shown in blue

Red tint indicates areas in which only landmark buildings are shown
Fine red dashed lines indicate selected fence and field lines where generally visible on aerial photographs. This information is unchecked



THIS MAP COMPLIES WITH NATIONAL MAP ACCURACY STANDARDS
FOR SALE BY U.S. GEOLOGICAL SURVEY, DENVER 25, COLORADO OR WASHINGTON 25, D.C.
AND BY THE STATE WATER CONSERVATION COMMISSION, BISMARCK, NORTH DAKOTA
A FOLDER DESCRIBING TOPOGRAPHIC MAPS AND SYMBOLS IS AVAILABLE ON REQUEST

USGS
Historical File
Topographic Division



ROAD CLASSIFICATION
Heavy-duty ——— Light-duty ———
Medium-duty ——— Unimproved dirt ———
U.S. Route ——— State Route ———

MANDAN, N. DAK.
SW 4 BISMARCK 15 QUADRANGLE
N4645-W10052.5/7.5

1962

AMS 5877 IV SW—SERIES V871

2585

MAR 2 1964