

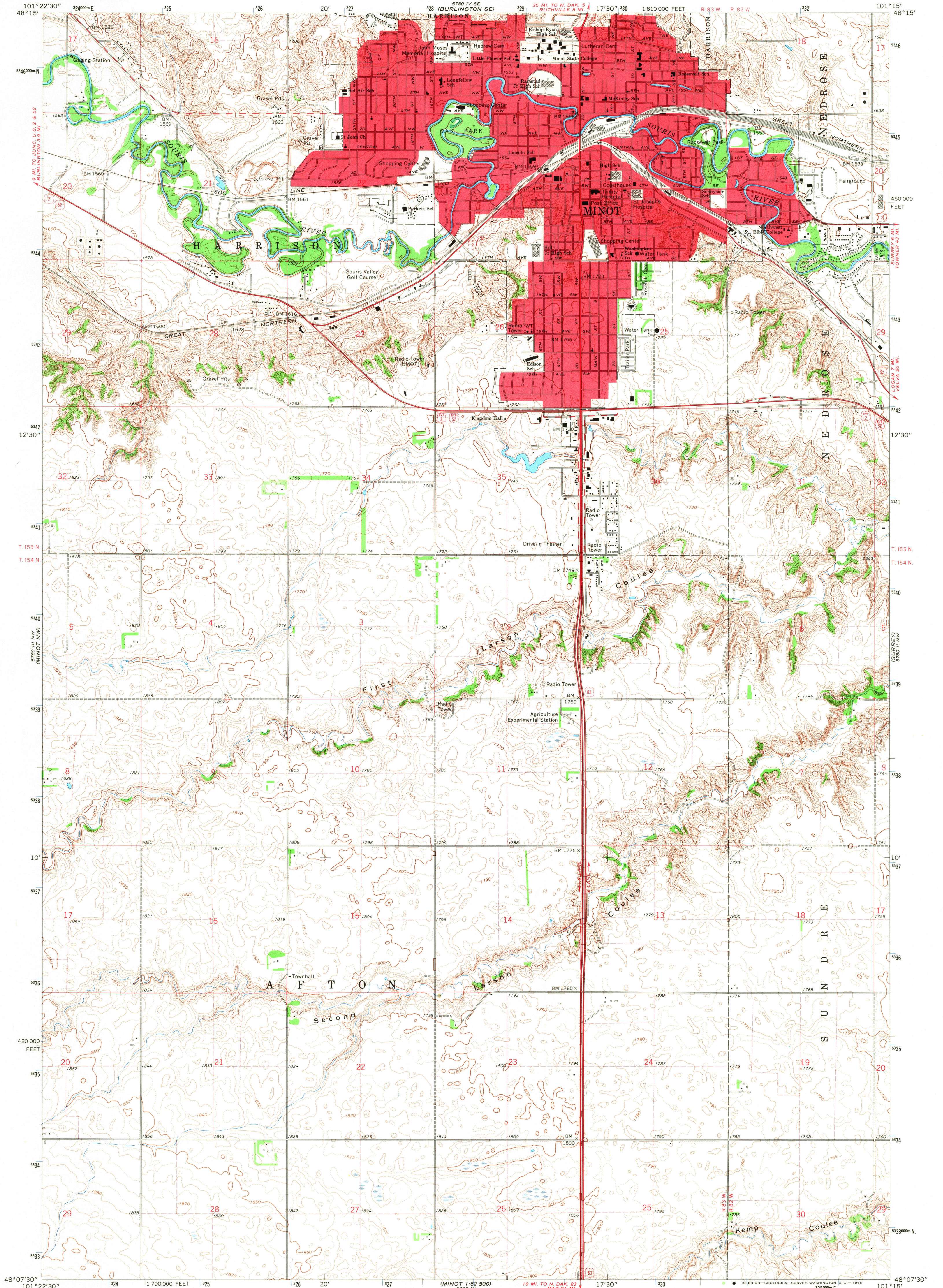
5780 IV SE  
BURLINGTON 3 9 N 2  
101°22'30" W  
48°15' N

UNITED STATES  
DEPARTMENT OF THE INTERIOR  
GEOLOGICAL SURVEY

STATE OF NORTH DAKOTA  
WATER COMMISSION  
GOVERNOR WILLIAM L. GUY, CHAIRMAN  
MILO W. HOISVEEN, SECRETARY AND CHIEF ENGINEER

MINOT QUADRANGLE  
NORTH DAKOTA - WARD CO.  
7.5 MINUTE SERIES (TOPOGRAPHIC)  
NE 1/4 MINOT 15' QUADRANGLE

5780 I SW  
IDEERING SW  
101°15' W  
48°15' N



Mapped, edited, and published by the Geological Survey as part of the Department of the Interior program for the development of the Missouri River Basin. Control by USGS and USC&GS. Planimetry by photogrammetric methods from aerial photographs taken 1938. Topography by planetable surveys 1948. Revised 1966. Polyconic projection. 1927 North American datum. 10,000-foot grid based on North Dakota coordinate system, north zone 14, shown in blue. Red tint indicates areas in which only landmark buildings are shown. Fine red dashed lines indicate selected fence and field lines where generally visible on aerial photographs. This information is unchecked.

SCALE 1:24,000  
CONTOUR INTERVAL 10 FEET  
DOTTED LINES REPRESENT 5-FOOT CONTOURS  
DATUM IS MEAN SEA LEVEL  
THIS MAP COMPLIES WITH NATIONAL MAP ACCURACY STANDARDS  
FOR SALE BY U.S. GEOLOGICAL SURVEY, DENVER, COLORADO 80225, OR WASHINGTON, D.C. 20242  
AND BY THE STATE WATER COMMISSION, BISMARCK, NORTH DAKOTA 58501  
A FOLDER DESCRIBING TOPOGRAPHIC MAPS AND SYMBOLS IS AVAILABLE ON REQUEST

USGS  
Historical File  
Topographic Division  
ROAD CLASSIFICATION  
Heavy-duty ——— Light-duty ———  
Medium-duty ——— Unimproved dirt ———  
U.S. Route  
U.S.G.S.  
MINOT, N. DAK.  
NE 1/4 MINOT 15' QUADRANGLE  
N4807.5-W10115.7.5  
1966  
AMS 5780 III NE-SERIES W871