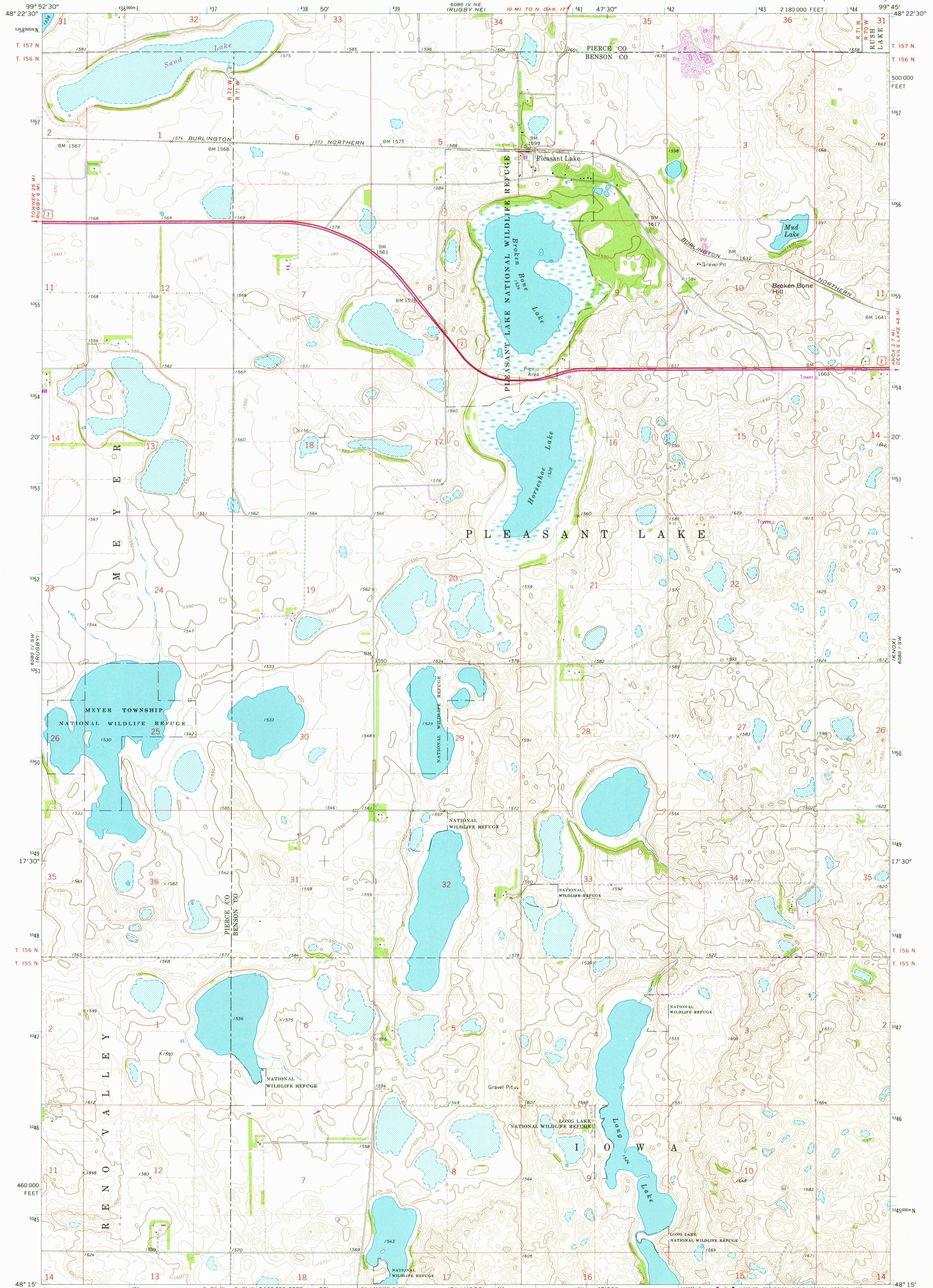


UNITED STATES  
DEPARTMENT OF THE INTERIOR  
GEOLOGICAL SURVEY

PLEASANT LAKE QUADRANGLE  
NORTH DAKOTA  
7.5 MINUTE SERIES (TOPOGRAPHIC)



Mapped, edited, and published by the Geological Survey

Control by USGS and USC&GS

Topography by photogrammetric methods from aerial  
photographs taken 1968. Field checked 1971

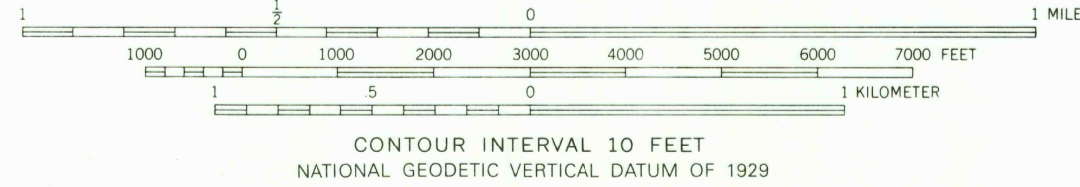
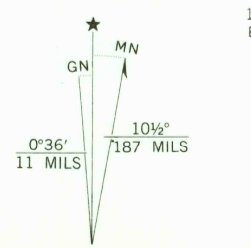
Polyconic projection. 1927 North American datum  
10,000-foot grid based on North Dakota coordinate system,  
north zone

1000-meter Universal Transverse Mercator grid ticks,  
zone 14, shown in blue

To place on the predicted North American Datum 1983  
move the projection lines 3 meters north and  
30 meters east as shown by dashed corner ticks

There may be private inholdings within the boundaries of  
the National or State reservations shown on this map

Revisions shown in purple compiled from aerial photographs taken  
1978. Map edited 1980. This information not field checked



ROAD CLASSIFICATION	
Primary highway, hard surface	Light-duty road, hard or improved surface
Secondary highway, hard surface	Unimproved road
Interstate Route	U. S. Route
	State Route

USGS  
Historical File  
Topographic Division  
PLEASANT LAKE, N. DAK.  
N4815-W9945/7.5  
1971  
PHOTOREVISED 1980  
DMA 6080 IV SE-SERIES V871

AUG 14 1980