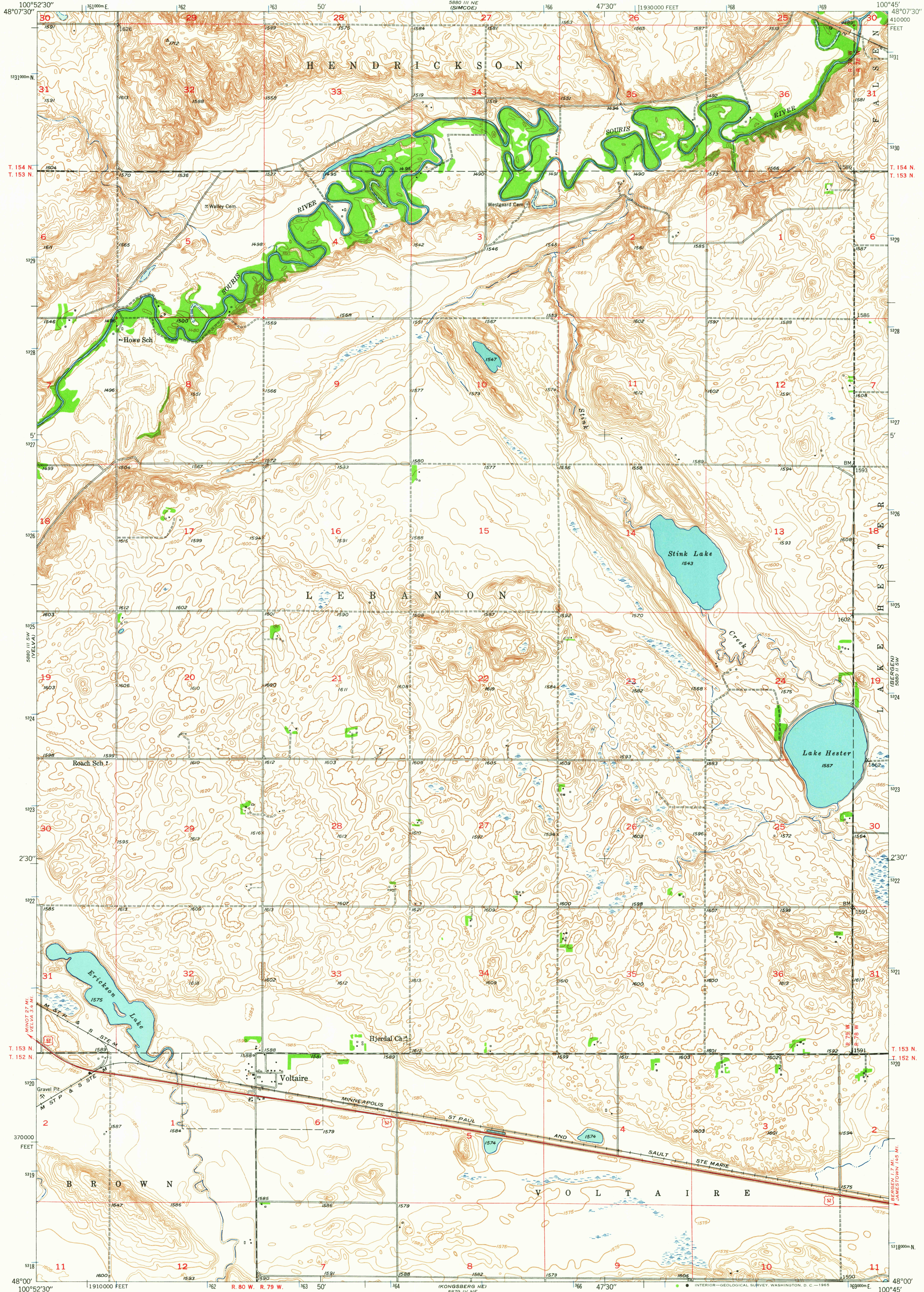
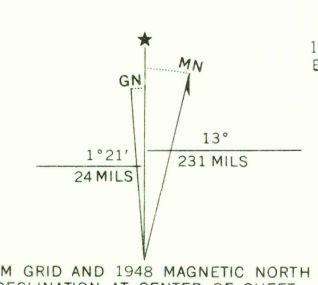


UNITED STATES
DEPARTMENT OF THE INTERIOR
GEOLOGICAL SURVEY

VOLTAIRE QUADRANGLE
NORTH DAKOTA—MC HENRY CO.
7.5 MINUTE SERIES (TOPOGRAPHIC)



Mapped, edited, and published by the Geological Survey
as part of the Department of the Interior program
for the development of the Missouri River Basin
Control by USGS and USC&GS
Culture and drainage in part compiled from
aerial photographs taken 1946
Topography by plane-table methods 1948
Polyconic projection. 1927 North American datum
10,000-foot grid based on North Dakota coordinate system,
north zone
1000-meter Universal Transverse Mercator grid ticks,
zone 14, shown in blue



CONTOUR INTERVAL 5 FEET
DATUM IS MEAN SEA LEVEL



ROAD CLASSIFICATION
Heavy-duty ——— Light-duty ———
Unimproved dirt ———
U.S. Route

VOLTAIRE, N. DAK.
N4800—W10045/7.5

1948

AMS 5880 III SE—SERIES V871

THIS MAP COMPLIES WITH NATIONAL MAP ACCURACY STANDARDS
FOR SALE BY U.S. GEOLOGICAL SURVEY, DENVER, COLORADO 80225 OR WASHINGTON, D.C. 20242,
AND BY THE STATE WATER CONSERVATION COMMISSION, BISMARCK, NORTH DAKOTA
A FOLDER DESCRIBING TOPOGRAPHIC MAPS AND SYMBOLS IS AVAILABLE ON REQUEST
THIS MAP AVAILABLE WITH OR WITHOUT SHADED RELIEF OVERPRINT

U.S.G.S.
FILE COPY
TOPOGRAPHIC DIVISION

MAR 3 1965
10,315