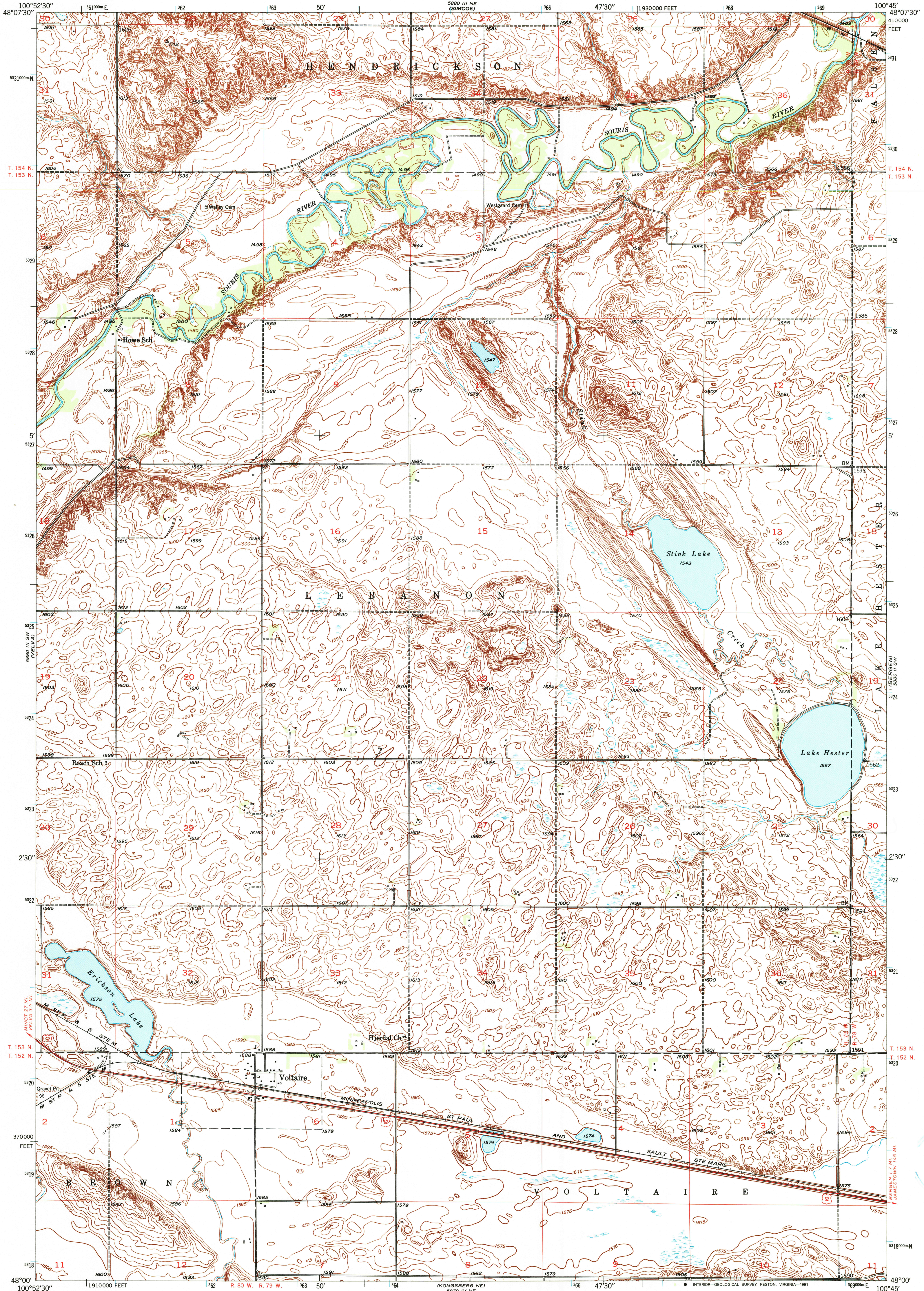


UNITED STATES
DEPARTMENT OF THE INTERIOR
GEOLOGICAL SURVEY

VOLTAIRE QUADRANGLE
NORTH DAKOTA—MC HENRY CO.
7.5 MINUTE SERIES (TOPOGRAPHIC)

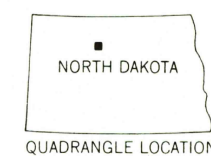
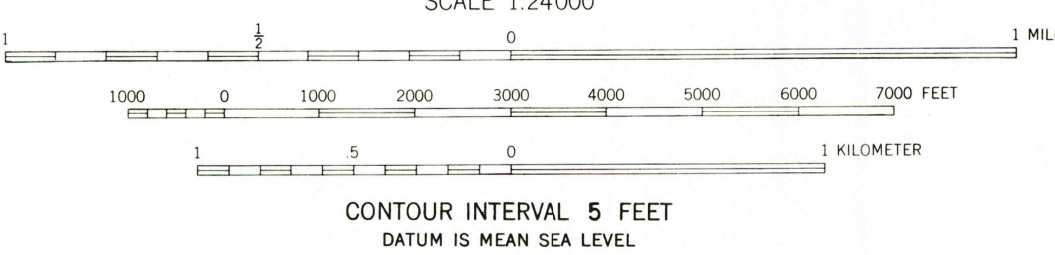
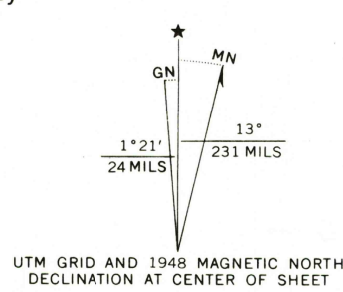


Mapped, edited, and published by the Geological Survey
as part of the Department of the Interior program
for the development of the Missouri River Basin
Control by USGS and USC&GS
Culture and drainage in part compiled from
aerial photographs taken 1946
Topography by plane-table methods 1948

Polyconic projection. 1927 North American datum
10000-foot grid based on North Dakota coordinate system,
north zone

1000-meter Universal Transverse Mercator grid ticks,
zone 14, shown in blue

Map photorevised 1977
No major culture or drainage changes observed



ROAD CLASSIFICATION
Heavy-duty ——— Light-duty - - - - -
Unimproved dirt
U.S. Route ———

VOLTAIRE, N. DAK.
N4800—W10045/7.5

1948
PHOTOINSPECTED 1977
AMS 5880 III SE—SERIES V871

THIS MAP COMPLIES WITH NATIONAL MAP ACCURACY STANDARDS
FOR SALE BY U.S. GEOLOGICAL SURVEY, DENVER, COLORADO 80225, OR RESTON, VIRGINIA 22092
AND NORTH DAKOTA GEOLOGICAL SURVEY, BISMARCK, NORTH DAKOTA 58505
A FOLDER DESCRIBING TOPOGRAPHIC MAPS AND SYMBOLS IS AVAILABLE ON REQUEST
THIS MAP AVAILABLE WITH OR WITHOUT SHADED RELIEF OVERPRINT

USGS AND HISTORICAL MAP
JUL 12 1991
REC'D FILE COPY