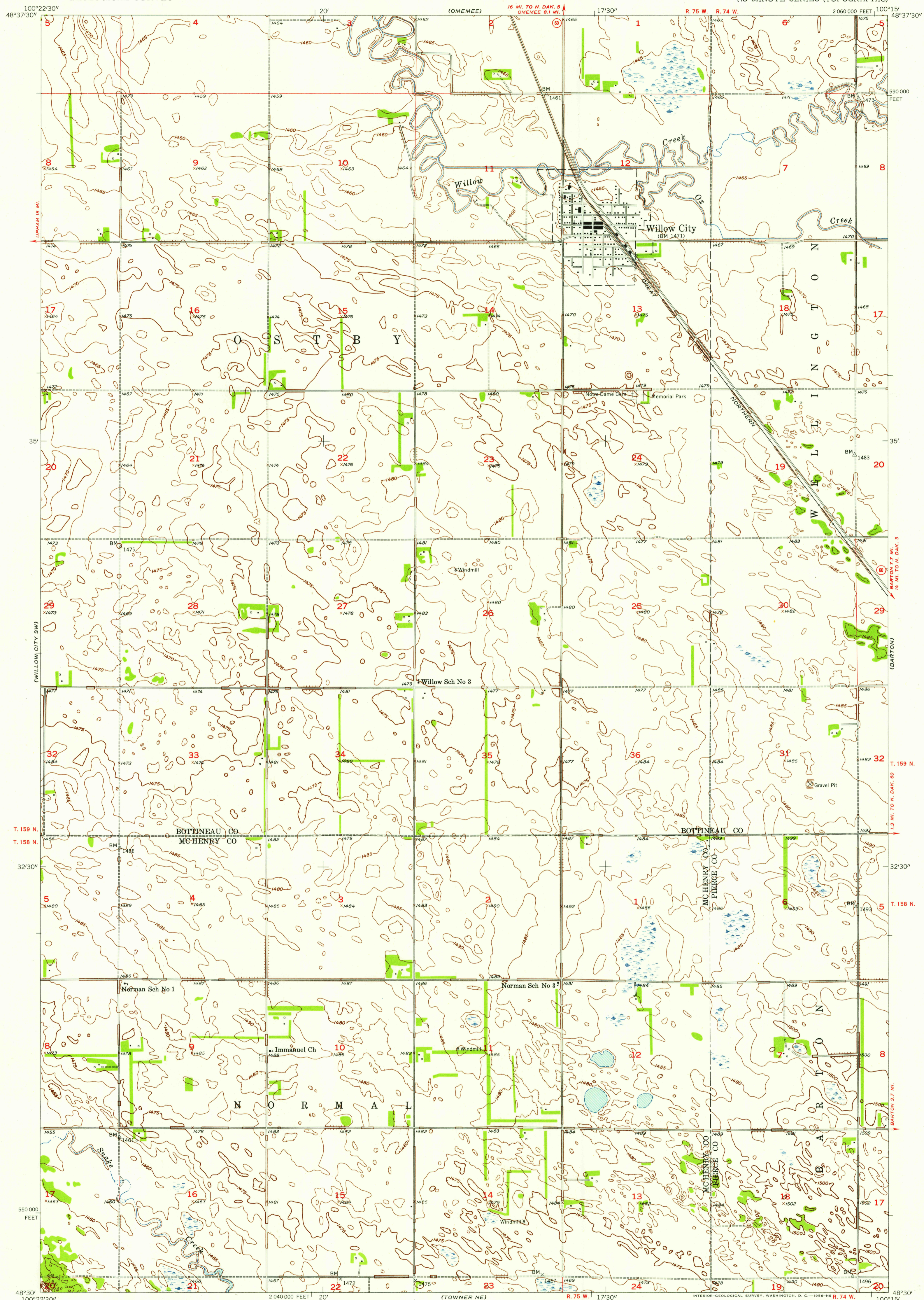


(GARDENA)

UNITED STATES  
DEPARTMENT OF THE INTERIOR  
GEOLOGICAL SURVEY

WILLOW CITY QUADRANGLE  
NORTH DAKOTA  
7.5 MINUTE SERIES (TOPOGRAPHIC)

(OVERLY)



U.S.G.S.  
FILE COPY  
TOPOGRAPHIC DIVISION

U.S.G.S.  
FILE COPY  
TOPOGRAPHIC DIVISION

(TOWNER NW)

Mapped, edited, and published by the Geological Survey as part of the Department of the Interior program for the development of the Missouri River Basin. Control by USGS and USC&GS. Culture and drainage in part compiled from aerial photographs taken 1951. Topography by planetable surveys 1954 and in part by U. S. Bureau of Reclamation. Polyconic projection. 1927 North American datum. 10,000-foot grid based on North Dakota coordinate system, north zone.

APPROXIMATE MEAN DECLINATION, 1954

THIS MAP COMPLIES WITH NATIONAL MAP ACCURACY STANDARDS FOR SALE BY U. S. GEOLOGICAL SURVEY, FEDERAL CENTER, DENVER COLORADO OR WASHINGTON 25, D. C. AND BY THE STATE WATER CONSERVATION COMMISSION, BISMARCK, NORTH DAKOTA. A FOLDER DESCRIBING TOPOGRAPHIC MAPS AND SYMBOLS IS AVAILABLE ON REQUEST.

WILLOW CITY, N. DAK.  
N 4830 - W 10015/7.5  
1954

MAY 1 1956

2105