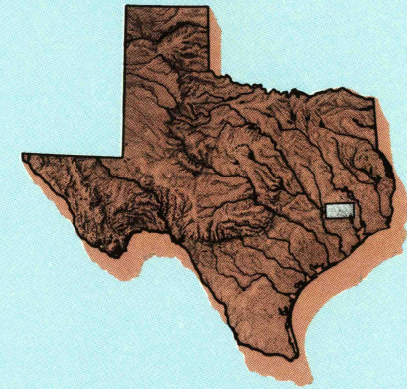


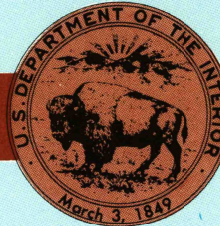
Conroe TEXAS

1:100 000-scale *metric*
topographic map



30 X 60 MINUTE QUADRANGLE
SHOWING

- Contours and elevations in meters
- Highways, roads and other manmade structures
- Water features
- Woodland areas
- Geographic names



GEOLOGICAL SURVEY

1985

Produced by the United States Geological Survey
Compiled from USGS 1:24 000-scale topographic maps dated 1961-1982. Planimetry revised from aerial photographs taken 1982-1983 and other source data. Revised information not field checked. Map edited 1985

1927 North American Datum (NAD 27). Projection and 10 000-meter-grid: Universal Transverse Mercator, zone 15
25 000-foot ticks: Texas coordinate system central and south central zones

The difference between NAD 27 and North American Datum of 1983 (NAD 83) is too small to show at this scale. The values of the shift between the datums for 7.5-minute intersections are given in USGS Bulletin 1875.
There may be private inholdings within the boundaries of the National or State reservations shown on this map

CONTOUR INTERVAL 10 METERS
NATIONAL GEODETIC VERTICAL DATUM OF 1929
ELEVATIONS SHOWN TO THE NEAREST METER

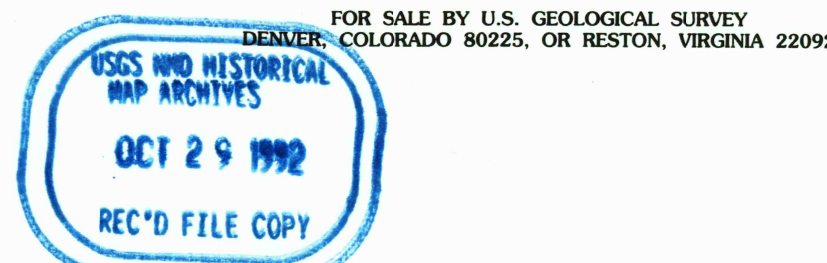
THIS MAP COMPLIES WITH NATIONAL MAP ACCURACY STANDARDS

CONVERSION TABLE		DECLINATION DIAGRAM	ADJOINING MAPS			
Meters	Feet		1	2	3	
1	3.2808		4	5	6	
2	6.5617					
3	9.8425					
4	13.1234					
5	16.4042					
6	19.6850					
7	22.9659					
8	26.2467					
9	29.5275					
10	32.8084					

To convert meters to feet multiply by 3.2808
To convert feet to meters multiply by 0.3048

UTM grid convergence (GM) and 1985 magnetic declination (MD) at center of map. Diagram is approximate

1	Bryan
2	Humble
3	Springtown
4	Beaumont
5	Baytown
6	Rockport
7	Houston
8	Anahuac



Topographic Map Symbols

Primary highway, hard surface	
Secondary highway, hard surface	
Light dirt road, principal creek, hard or improved surface	
Other road or street, trail	
Route marker: Interstate, U. S. State	
Railroad: standard gage; narrow gage	
Bridge: overpass; underpass	
Tunnel: road; railroad	
Built up area; locality; elevation	
Airport; landing field; landing strip	
National boundary	
State boundary	
County boundary	
National or State reservation boundary	
Land grant boundary	
U. S. public lands survey: range, township; section	
Range, township; section line: protruded	
Power transmission line; pipeline	
Dam; dam with lock	
Cemetery; building	
Windmill; water well; spring	
Mine shaft; pit or cave; mine, quarry; gravel pit	
Campground; picnic area; U. S. location monument	
Ruin; cliff dwelling	
Distorted surface: strip mine, lava, sand	
Contours: index; intermediate; supplementary	
Bathymetric contours: index; intermediate	
Stream; lake; perennial; intermittent	
Rapid; large and small; falls; large and small	
Area to be submerged: marsh, swamp	
Land subject to controlled inundation; woodland	
Straw; mangrove	
Orchard; vineyard	

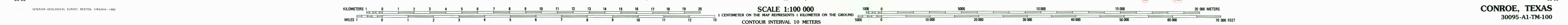
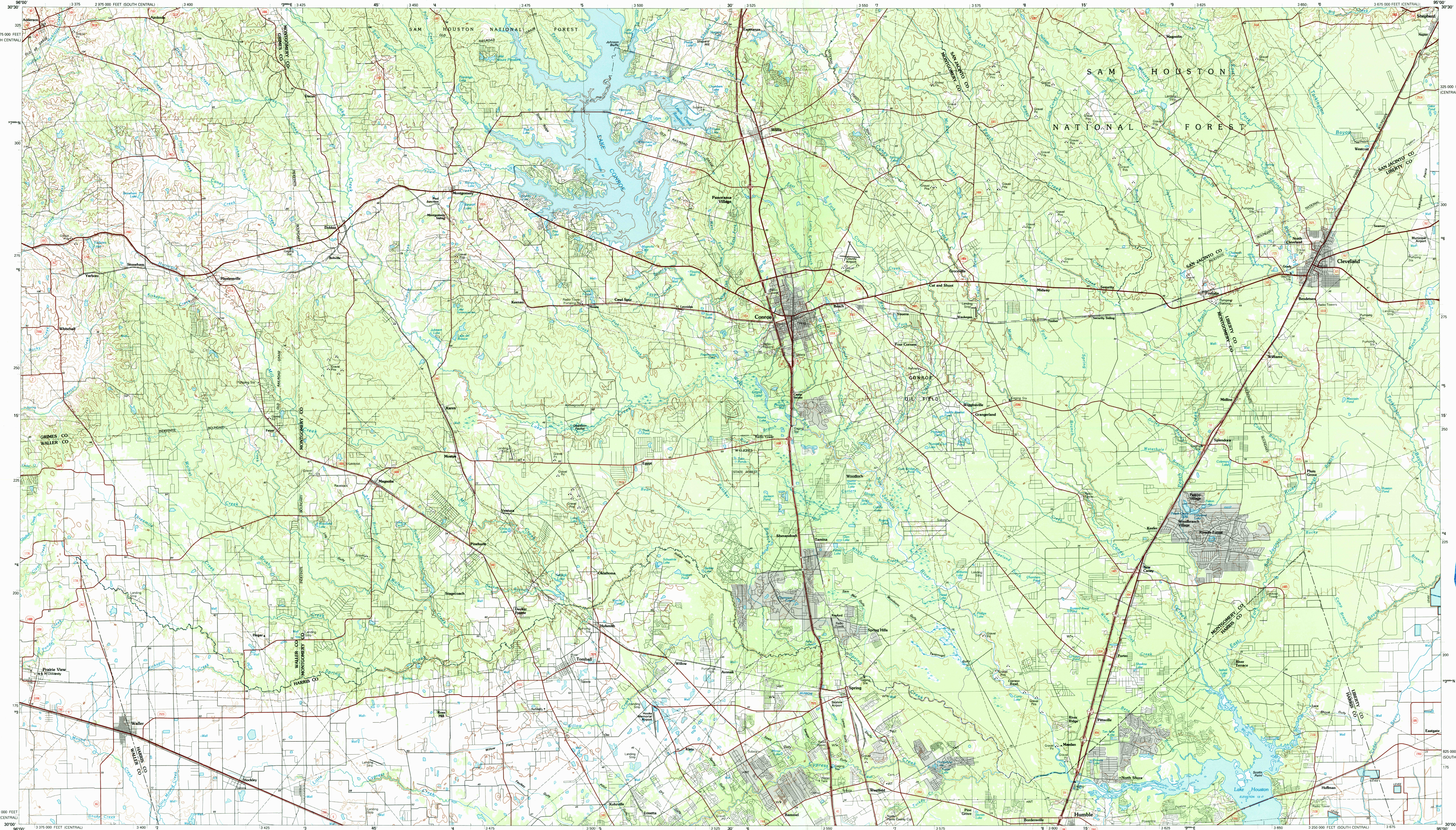
A pamphlet describing topographic maps is available on request

CONROE, TEXAS
30095-A1-TM-100

1985

CONROE, TEXAS

30X60 MINUTE SERIES (TOPOGRAPHIC)



SCALE 1:100 000

1 CENTIMETER ON THE MAP REPRESENTS 1 KILOMETER ON THE GROUND

CONTOUR INTERVAL 10 METERS