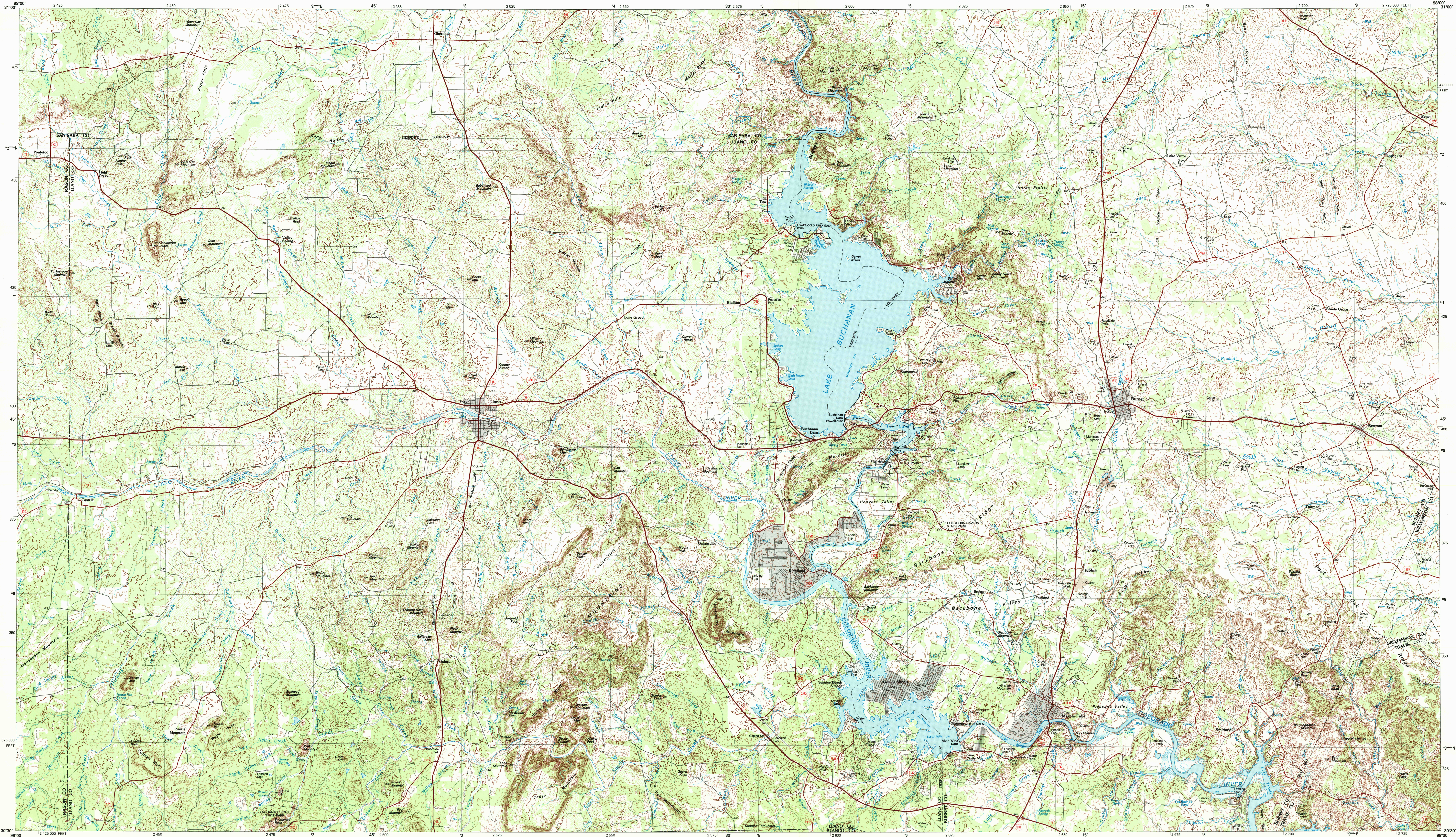


## LLANO, TEXAS

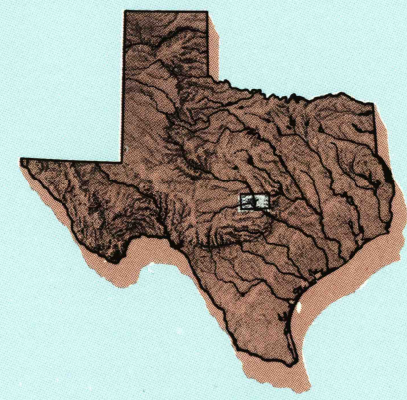
30 X 60 MINUTE SERIES (TOPOGRAPHIC)



# Llano

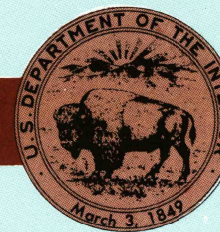
## TEXAS

1:100 000-scale *metric*  
topographic map



**30 X 60 MINUTE QUADRANGLE  
SHOWING**

- **Contours and elevations in meters**
- **Highways, roads and other manmade structures**
- **Water features**
- **Woodland areas**
- **Geographic names**



GEOLOGICAL SURVEY

1992

Produced by the United States Geological Survey

Compiled from USGS 1:24 000-scale topographic maps dated 1955-1986. Flannery revised from aerial photographs taken 1987-1988 and other source data. Revised information not field checked. Map edited 1992

1927 North American Datum (NAD 27). Projection and 10 000-meter grid: Universal Transverse Mercator, zone 14 25 000-foot ticks: Texas coordinate system central zone

The difference between NAD 27 and North American Datum of 1983 (NAD 83) is too small to show at this scale. The values of the shift between the datums for 7.5 minute intersections are given in USGS Bulletin 1875

There may be private inholdings within the boundaries of the National or State reservations shown on this map

CONTOUR INTERVAL 10 METERS  
NATIONAL GEODETIC VERTICAL DATUM OF 192  
ELEVATIONS SHOWN TO THE NEAREST METER

THIS MAP COMPLIES WITH NATIONAL MAP ACCURACY STANDARD

### CONVERSION TABLE

Meters	Feet
1	3.2808
2	6.5617
3	9.8425
4	13.1232
5	16.4040
6	19.6848
7	22.9656
8	26.2464
9	29.5271
10	32.8084

To convert meters to feet multiply by 3.2808

To convert feet to meters multiply by 0.3048

### DECLINATION DIAGRAM

GN MN

0°15' 6°15' 116 MILS

4 MILS

UTM grid convergence (GN and 1983 magnetic declination) (M) at center of map  
Diagram is approximate

### ADJOINING MAPS

1	2	3
6	7	8

1 Brady  
2 San Saba  
3 Temple  
4 Mason  
5 Taylor  
6 Kerrville  
7 Fredericks  
8 Austin

FOR SALE BY U.S. GEOLOGICAL SURVEY  
DENVER, COLORADO 80225, OR RESTON, VIRGINIA 22092

USGS AND HISTORICAL  
MAP ARCHIVES

SEP 10 1992

REC'D FILE COPY

## Topographic Map Symbols

Primary highway, hard surface	
Secondary highway, hard surface	
Light duty road, principal street, hard or improved surface	
Other road or street, trail	
Route marker: Interstate, U. S. State	
Railroad: standard gage; narrow gage	
Bridge: overpass; underpass	
Tunnel: road; railroad	
Built up area; locality; elevation	
Airport: landing field; landing strip	
National boundary	
County boundary	
State boundary	
Nationality boundary	
National or State reservation boundary	
Land grant boundary	
U. S. public land survey: range, township, section	
Range, township, section line: protracted	
Power transmission line, pipeline	
Dam; dam with lock	
Canal; building	
Windmill; water wheel; spring	
Area shaft; oil or steam mine; camp, gravel pit	
Campground; picnic area; U. S. location monument	
River; cliff; dwelling	
Distorted surface: strip mine, lava, sand	
Stream: index; intermittent; supplementary	
Hydrographic contours: index; intermediate	
Coastline: lake; perennial; intermittent	
Rapids, large and small; falls, large and small	
Area to be submerged; marsh, swamp	
Land subject to controlled inundation; woodland	
Sand; meadows	
Orchard; vineyard	

A pamphlet describing topographic maps is available on request.

LLANO, TEXAS

30098-E1-TM-100

1992