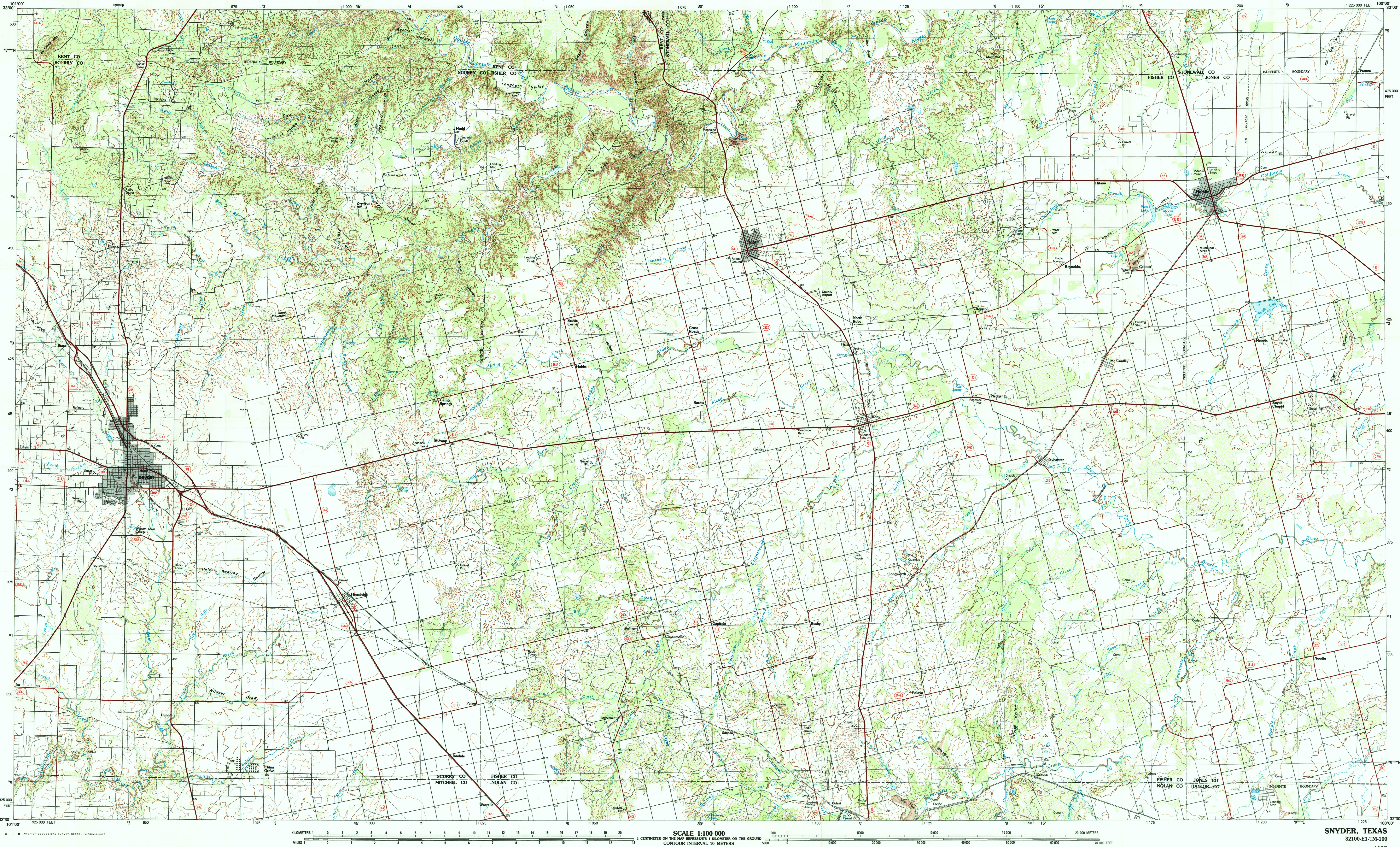


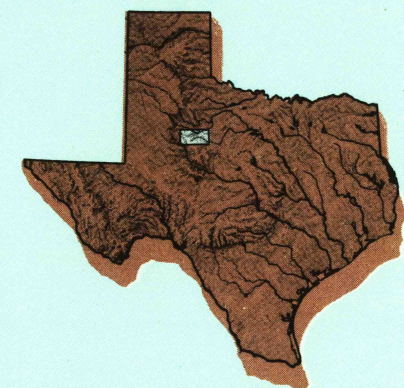
SNYDER, TEXAS

30X60 MINUTE SERIES (TOPOGRAPHIC)



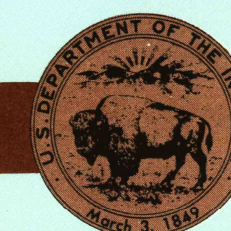
Snyder
TEXAS

1:100 000-scale *metric*
topographic map



30 X 60 MINUTE QUADRANGLE
SHOWING

- Contours and elevations in meters
- Highways, roads and other manmade structures
- Water features
- Woodland areas
- Geographic names



GEOLOGICAL SURVEY

1985

Produced by the United States Geological Survey
Compiled from USGS 1:24 000-scale topographic maps
dated 1951-1984. Planimetry revised from aerial
photographs taken 1982 and other source data
Revised information not field checked
Map edited 1985

Projection and 10 000-meter grid, zone 14
Universal Transverse Mercator
25 000-foot grid ticks based on Texas coordinate
system, north central zone. 1927 North American Datum
To place on the predicted North American Datum 1983 move
the projection lines 9 meters south and 36 meters east
There may be private inholdings within the boundaries of
the National or State reservations shown on this map

CONTOUR INTERVAL 10 METERS
NATIONAL GEODETIC VERTICAL DATUM OF 1929
ELEVATIONS SHOWN TO THE NEAREST METER

THIS MAP COMPLIES WITH NATIONAL MAP ACCURACY STANDARDS

CONVERSION TABLE

Meters	Feet
1	3.2809
2	6.5617
3	9.8425
4	13.1234
5	16.4042
6	19.6850
7	22.9659
8	26.2467
9	29.5276
10	32.8084

To convert meters to feet multiply by 3.2809

To convert feet to meters multiply by 0.3048

DECLINATION DIAGRAM

UTM grid convergence (GN) and true magnetic declination (MN) at center of map
Diagram is approximate

ADJOINING MAPS

1	2	3
1	2	3
6	7	8

- 1 Slaton
- 2 Aspermont
- 3 Haskell
- 4 Laramie
- 5 Big Spring
- 6 Stamford
- 7 Sweetwater
- 8 Abilene

FOR SALE BY U. S. GEOLOGICAL SURVEY, DENVER, COLORADO 80225
OR RESTON, VIRGINIA 22092

Topographic Map Symbols

Primary highway, hard surface	
Secondary highway, hard surface	
Light duty road, principal street, hard or improved surface	
Other road or street, soft surface	
Route marker, Interstate, U. S.; State	
Railroad: standard gage, narrow gage	
Bridge, overpass; underpass	
Tunnel; road, railroad	
Water: up area, locally; otherwise	
Airport: landing field; landing strip	
National boundary	
State boundary	
County boundary	
National or State reservation boundary	
Land grant boundary	
U. S. public lands section; range, township; section	
Range, township; section line: protracted	
Transmission line, pipeline	
Dam; with lock	
Cemetery; building	
Windmill; water well; spring	
Mine shaft; not for sale; mine, quarry; gravel pit	
Unimproved; picnic area, U. S. location monument	
Ruins; cliff dwelling	
Distorted surface: strip mine, lake, sand	
Contour: index; intermediate; supplementary	
Rhymetymic contour; index, intermediate	
Stream: lake; perennial; intermittent	
Rapids; large and small; falls, large and small	
Area to be submerged; marsh, swamp	
Land subject to controlled inundation; woodland	
Swamp; mangrove	
Orchard; vineyard	

A pamphlet describing topographic maps is available on request.