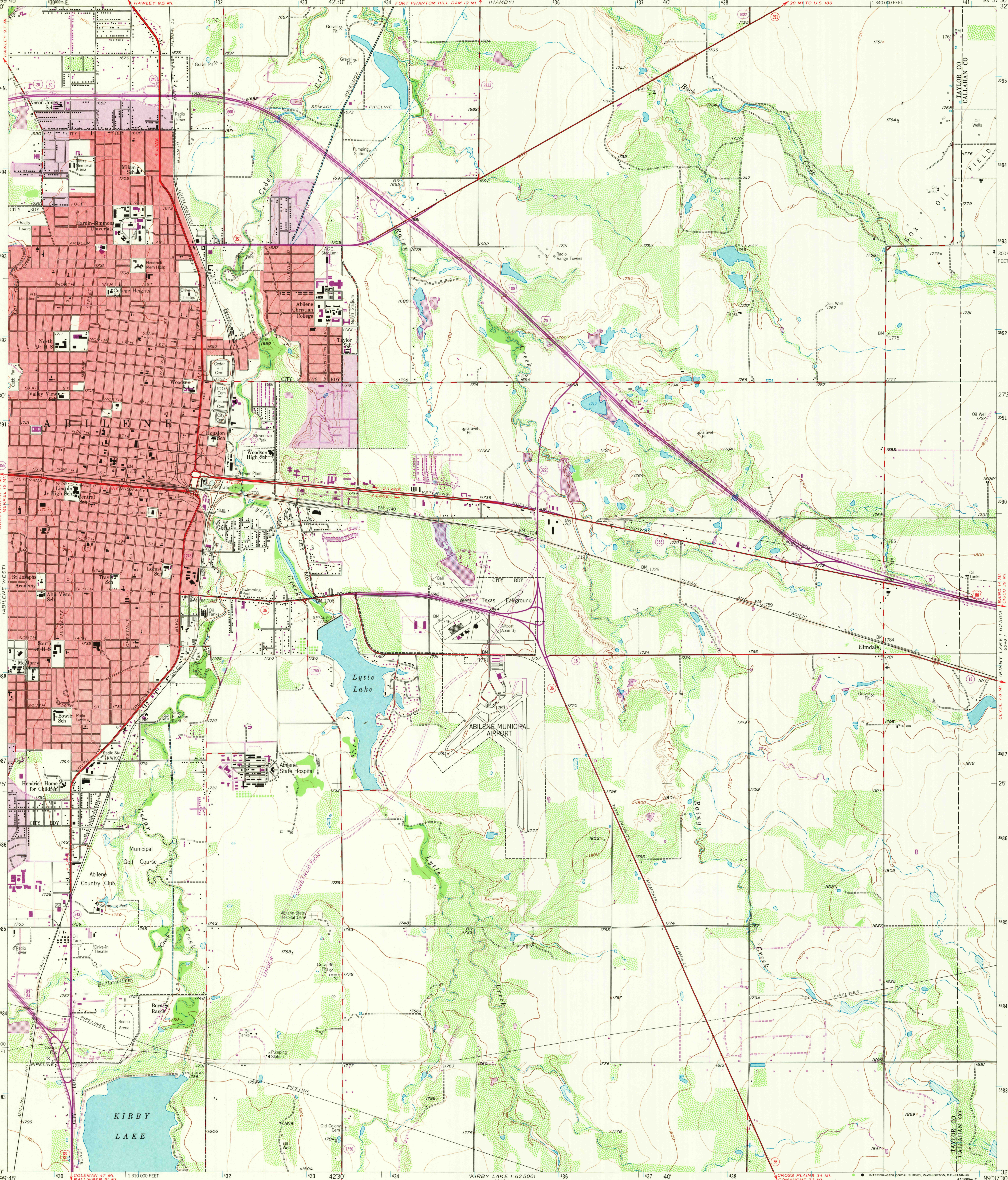
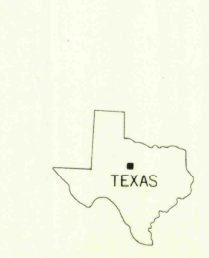
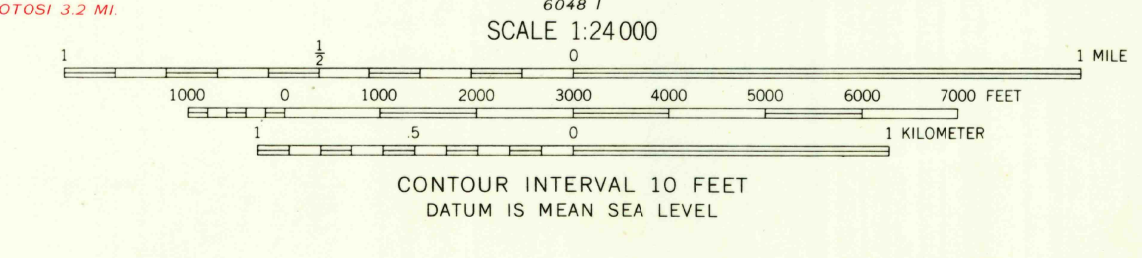
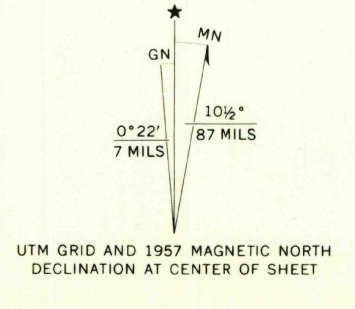


ABILENE EAST QUADRANGLE  
TEXAS  
7.5 MINUTE SERIES (TOPOGRAPHIC)  
NW 1/4 ABILENE 15 QUADRANGLE

UNITED STATES  
DEPARTMENT OF THE INTERIOR  
GEOLOGICAL SURVEY



Mapped, edited, and published by the Geological Survey  
Control by USGS and USC&GS  
Topography from aerial photographs by ER-55 plotter  
Aerial photographs taken 1954. Field check 1957  
Polyconic projection. 1927 North American datum  
10,000-foot grid based on Texas coordinate system,  
north central zone  
1000-meter Universal Transverse Mercator grid ticks,  
zone 14, shown in blue  
Red tint indicates areas in which only  
landmark buildings are shown  
Revisions shown in purple compiled by the Geological Survey from  
aerial photographs taken 1967. This information not field checked  
Purple tint indicates extension of urban areas



U.S.G.S.  
FILE COPY  
TOPOGRAPHIC DIVISION

ROAD CLASSIFICATION  
Heavy-duty \_\_\_\_\_ Light-duty \_\_\_\_\_  
Medium-duty \_\_\_\_\_ Unimproved dirt \_\_\_\_\_  
Interstate Route \_\_\_\_\_ U.S. Route \_\_\_\_\_ State Route \_\_\_\_\_  
ABILENE EAST, TEX.  
NW 1/4 ABILENE 15 QUADRANGLE  
N3222.5-W9937.5/7.5  
1957  
AMS 6048 1 NW-SERIES V882  
OCT 15 1968