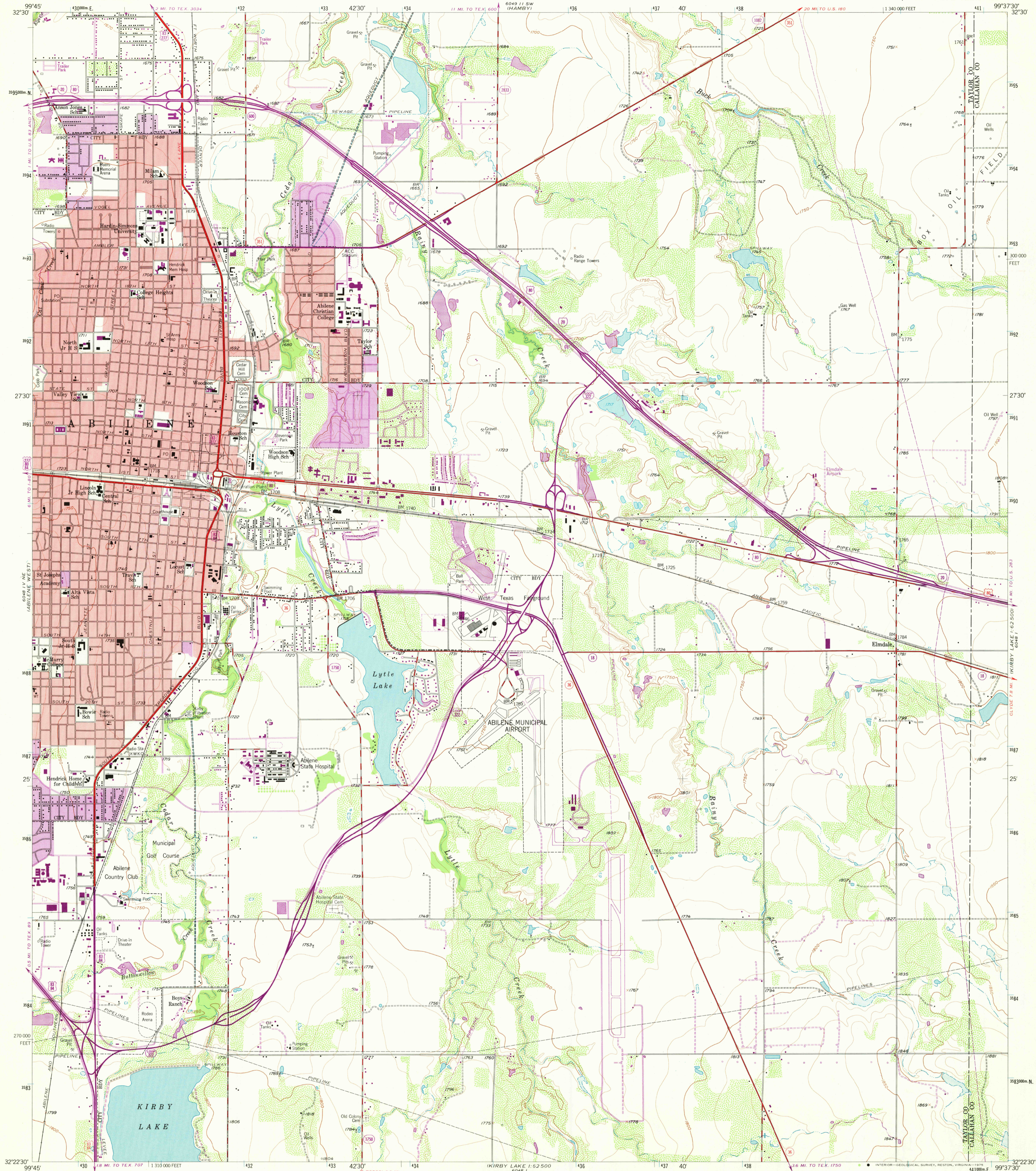


UNITED STATES  
DEPARTMENT OF THE INTERIOR  
GEOLOGICAL SURVEY

ABILENE EAST QUADRANGLE  
TEXAS  
7.5 MINUTE SERIES (TOPOGRAPHIC)  
NW/4 KIRBY LAKE 15' QUADRANGLE



Mapped, edited, and published by the Geological Survey  
Control by USGS and NOS/NOAA

Topography from aerial photographs by ER-55 plotter  
Aerial photographs taken 1954. Field check 1957

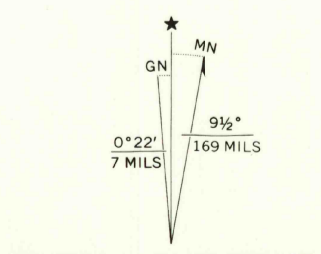
Polyconic projection. 1927 North American datum  
10,000-foot grid based on Texas coordinate system,  
north central zone

1000-metre Universal Transverse Mercator grid ticks,  
zone 14, shown in blue

Red tint indicates areas in which only  
landmark buildings are shown

Revisions shown in purple compiled from aerial photographs  
taken 1967 and 1974. This information not field checked

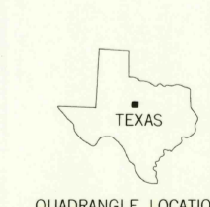
Purple tint indicates extension of urban areas



SCALE 1:24,000  
CONTOUR INTERVAL 10 FEET  
NATIONAL GEODETIC VERTICAL DATUM OF 1929

THIS MAP COMPLIES WITH NATIONAL MAP ACCURACY STANDARDS  
FOR SALE BY U.S. GEOLOGICAL SURVEY, DENVER, COLORADO 80225, OR RESTON, VIRGINIA 22092  
A FOLDER DESCRIBING TOPOGRAPHIC MAPS AND SYMBOLS IS AVAILABLE ON REQUEST

ROAD CLASSIFICATION  
Primary highway, hard surface  
Secondary highway, hard surface  
Unimproved road  
Interstate Route  
U. S. Route  
State Route



USGS  
HISTORICAL FILE  
TOPOGRAPHIC DIVISION  
ABILENE EAST, TEX.  
NW/4 KIRBY LAKE 15' QUADRANGLE  
N3222.5-W9937.5/7.5  
1957  
PHOTOREVISED 1967 AND 1974  
AMS 6048 1 NW - SERIES V882

FEB 02 1976