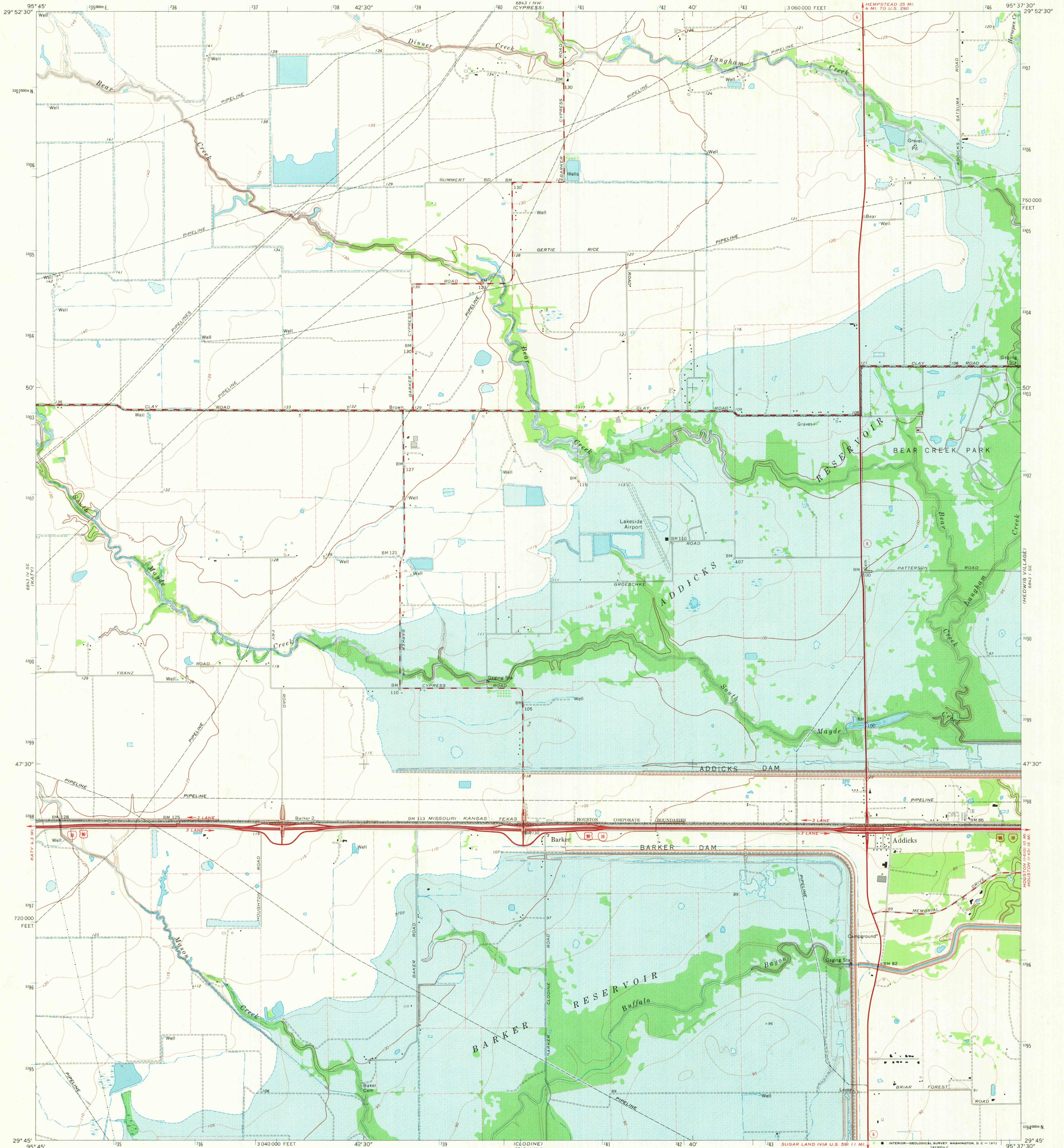
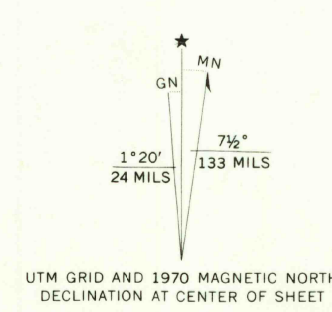


UNITED STATES
DEPARTMENT OF THE INTERIOR
GEOLOGICAL SURVEY

ADDICKS QUADRANGLE
TEXAS—HARRIS CO.
7.5 MINUTE SERIES (TOPOGRAPHIC)
SW/4 ADDICKS 15' QUADRANGLE



Mapped, edited, and published by the Geological Survey
Control by USGS and USC&GS
Planimetry by photogrammetric methods from aerial photographs
taken 1968. Topography enlarged from 1:62 500-scale map of
Addicks quadrangle dated 1955. Topography by planetable surveys
field checked 1970. Supersedes map dated 1915
Polyconic projection. 1927 North American datum
10,000-foot grid based on Texas coordinate system,
south central zone
1000-meter Universal Transverse Mercator grid ticks,
zone 15, shown in blue
Fine red dashed lines indicate selected fence lines
Areas covered by light-blue pattern are
subject to controlled inundation



SCALE 1:24 000
CONTOUR INTERVAL 5 FEET
DATUM IS MEAN SEA LEVEL



ROAD CLASSIFICATION
Primary highway,
hard surface
Secondary highway,
hard surface
Unimproved road
Interstate Route
U. S. Route
State Route

THIS MAP COMPLIES WITH NATIONAL MAP ACCURACY STANDARDS
FOR SALE BY U. S. GEOLOGICAL SURVEY, DENVER, COLORADO 80225, OR WASHINGTON, D. C. 20242
A FOLDER DESCRIBING TOPOGRAPHIC MAPS AND SYMBOLS IS AVAILABLE ON REQUEST

ADDICKS, TEX.
SW/4 ADDICKS 15' QUADRANGLE
N2945—W9537.5/7.5

1970
AMS 6843 I SW—SERIES Y882

USGS
HISTORICAL FILE
TOPOGRAPHIC DIVISION

2530
SEP 21 1972