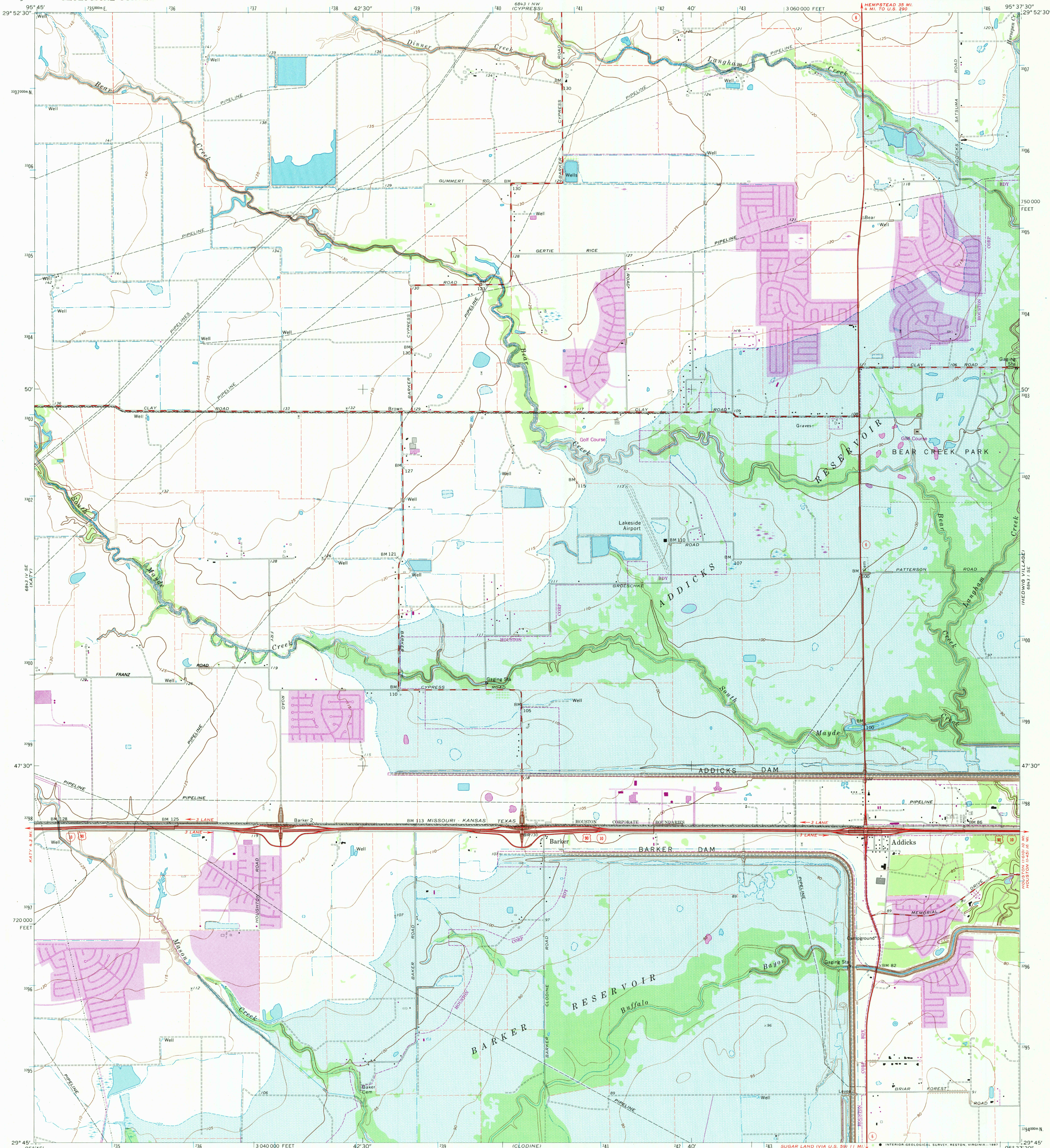


UNITED STATES  
DEPARTMENT OF THE INTERIOR  
GEOLOGICAL SURVEY

ADDICKS QUADRANGLE  
TEXAS—HARRIS CO.  
7.5 MINUTE SERIES (TOPOGRAPHIC)  
SW/4 ADDICKS 15' QUADRANGLE



Mapped, edited, and published by the Geological Survey  
Control by USGS and NOS/NOAA

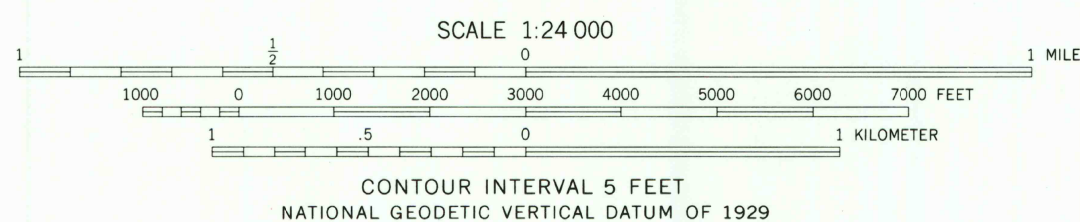
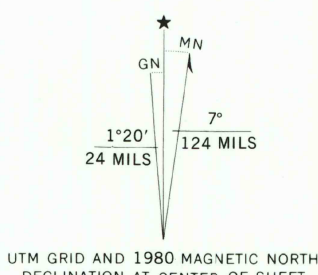
Planimetry by photogrammetric methods from aerial photographs  
taken 1968. Topography enlarged from 1:62 500-scale map of  
Addicks quadrangle dated 1955. Topography by planimetric surveys  
field checked 1970. Supersedes map dated 1915

Polyconic projection. 1927 North American Datum  
10,000-foot grid based on Texas coordinate system,  
south central zone  
1000-meter Universal Transverse Mercator grid ticks,  
zone 15, shown in blue

Fine red dashed lines indicate selected fence lines  
Areas covered by light-blue pattern are  
subject to controlled inundation

Revisions shown in purple compiled from aerial photographs  
taken 1977 and other source data. This information not  
field checked. Map edited 1980

Purple tint indicates extension of urban areas



THIS MAP COMPLIES WITH NATIONAL MAP ACCURACY STANDARDS.  
FOR SALE BY U. S. GEOLOGICAL SURVEY, DENVER, COLORADO 80225, OR RESTON, VIRGINIA 22092  
A FOLDER DESCRIBING TOPOGRAPHIC MAPS AND SYMBOLS IS AVAILABLE ON REQUEST

To place on the predicted North American Datum 1983  
move the projection lines 20 meters south and  
23 meters east as shown by dashed corner ticks



QUADRANGLE LOCATION

2995-342

ROAD CLASSIFICATION  
Primary highway, hard surface  
Secondary highway, hard surface  
Interstate Route  
U. S. Route  
State Route  
Light-duty road, hard or improved surface  
Unimproved road



ADDICKS, TEX.  
SW/4 ADDICKS 15' QUADRANGLE  
29095-06-TF-024

1970  
PHOTOREVISED 1980  
DMA 6843 1 SW—SERIES V882