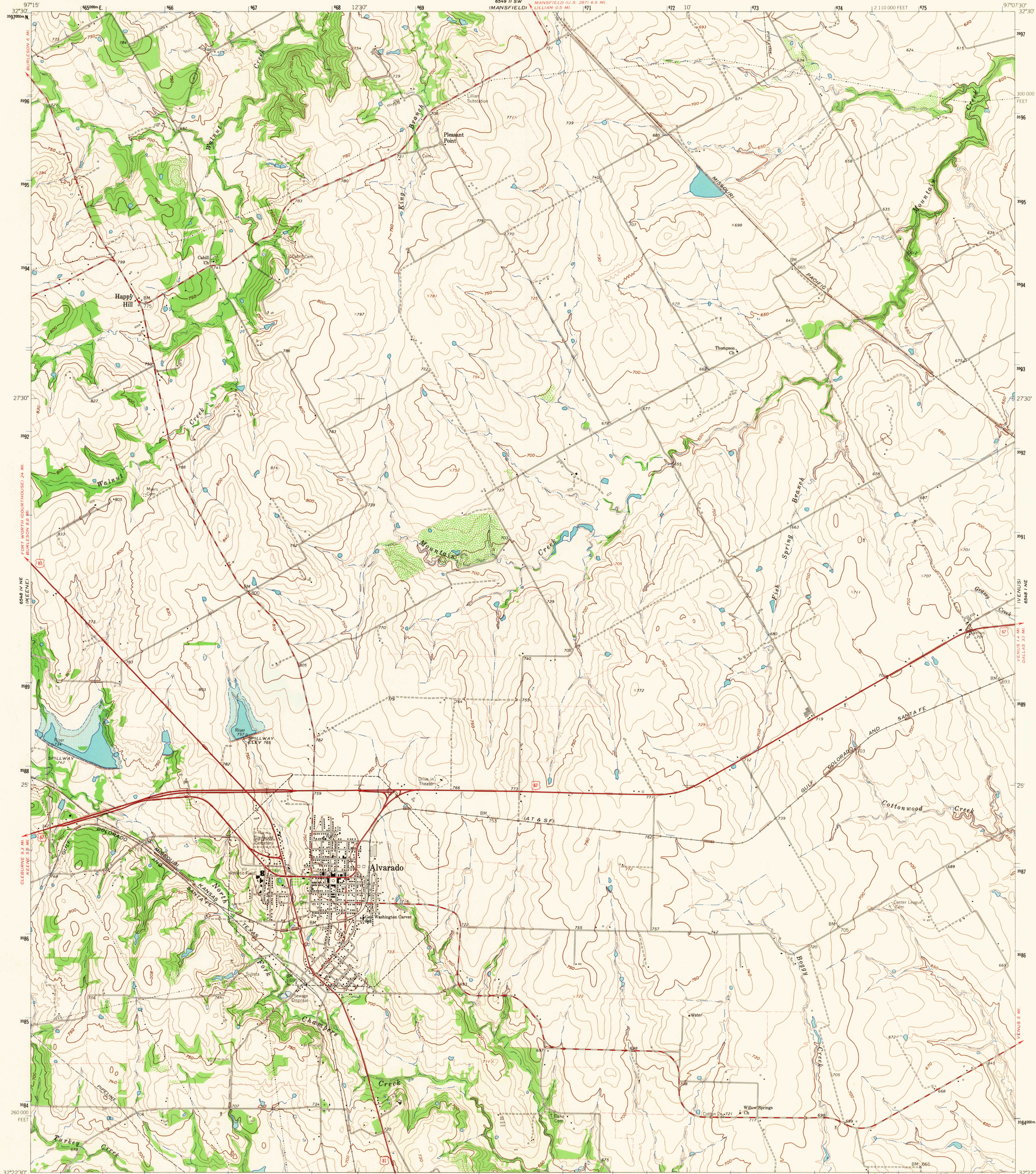


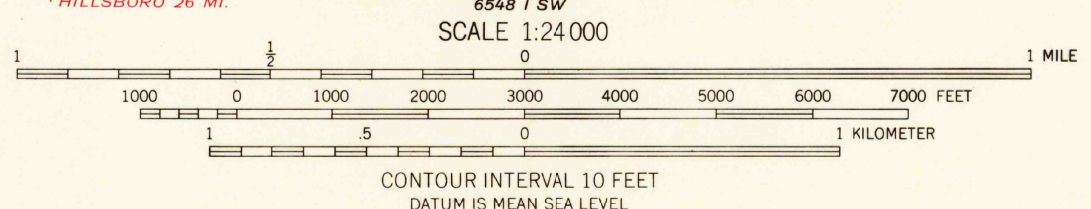
UNITED STATES  
DEPARTMENT OF THE INTERIOR  
GEOLOGICAL SURVEY

ALVARADO QUADRANGLE  
TEXAS-JOHNSON CO.  
7.5 MINUTE SERIES (TOPOGRAPHIC)



Mapped, edited, and published by the Geological Survey  
Control by USGS and USC&GS  
Topography by photogrammetric methods from aerial  
photographs taken 1958. Field checked 1961.  
Polyconic projection. 1927 North American datum.  
10,000-foot grid based on Texas coordinate system,  
north central zone.  
1000-meter Universal Transverse Mercator grid ticks,  
zone 14, shown in blue.  
Fine red dashed lines indicate selected fence and field lines where  
generally visible on aerial photographs. This information is unchecked.  
Areas covered by dashed light-blue pattern are subject  
to controlled inundation.

UTM GRID AND 1961 MAGNETIC NORTH  
DECLINATION AT CENTER OF SHEET



ROAD CLASSIFICATION  
Heavy-duty —————  
Medium-duty —————  
Light-duty —————  
Unimproved dirt —————  
U.S. Route



U.S.G.S.  
FILE COPY  
TOPOGRAPHIC DIVISION

ALVARADO, TEX.  
N3222.5-W9707.5/7.5

1961

AMS 6548 1 NW-SERIES V882

5195  
JUL 18 1967