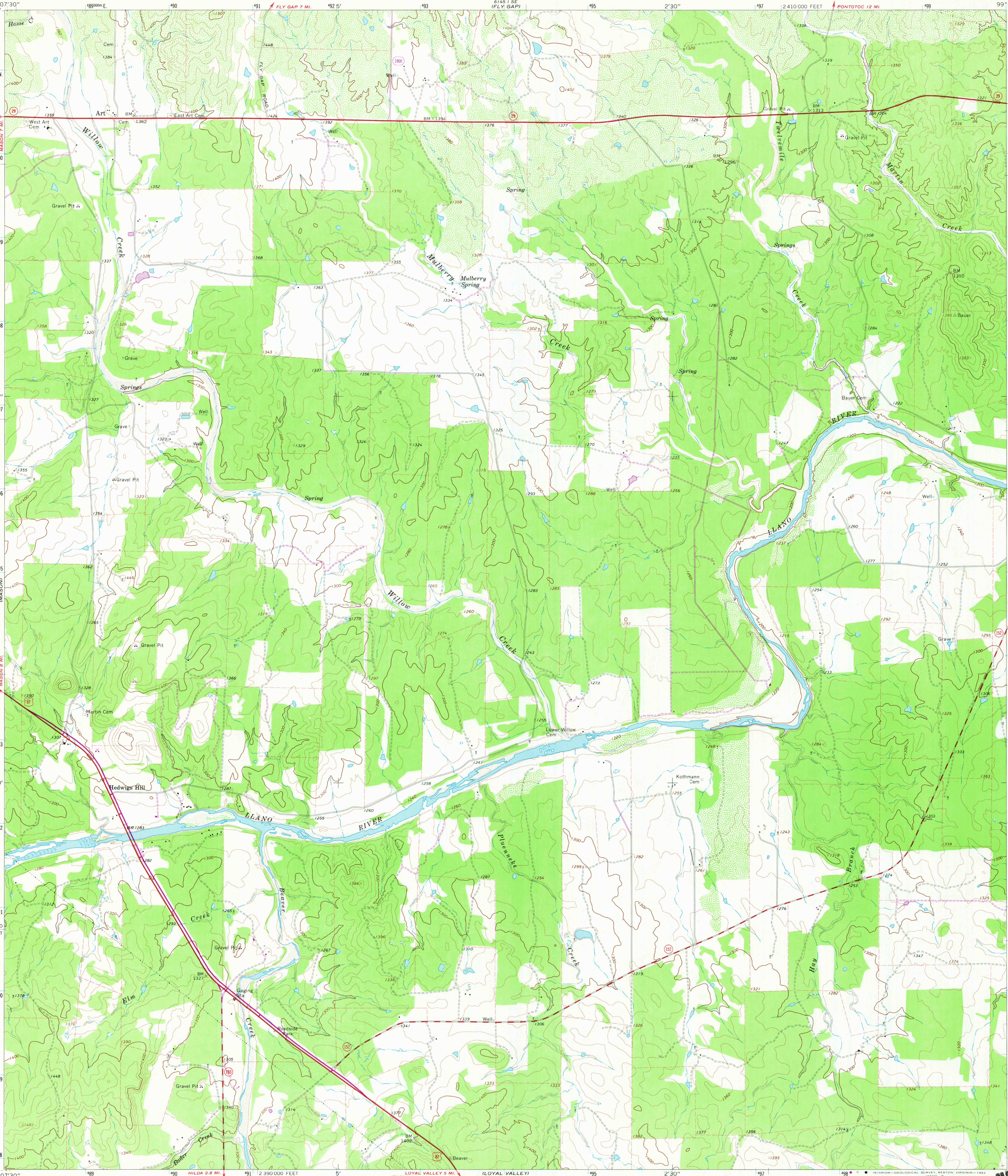
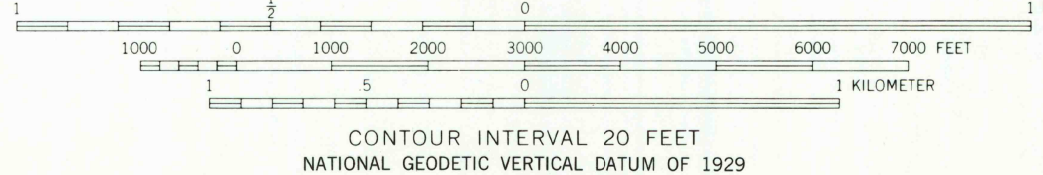
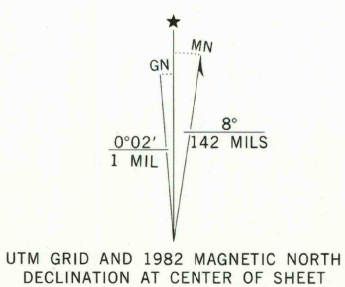


UNITED STATES  
DEPARTMENT OF THE INTERIOR  
GEOLOGICAL SURVEY

ART QUADRANGLE  
TEXAS—MASON CO.  
7.5 MINUTE SERIES (TOPOGRAPHIC)



Mapped, edited, and published by the Geological Survey  
Control by USGS and NOS/NOAA  
Topography by photogrammetric methods from aerial  
photographs taken 1966. Field checked 1967.  
Polyconic projection. 10,000-foot grid ticks based on Texas  
coordinate system, central zone. 1,000-meter Universal  
Transverse Mercator grid ticks, zone 14, shown in blue. 1927  
North American Datum. To place on the predicted  
North American Datum 1983 move the projection lines  
16 meters south and 31 meters east as shown by dashed corner ticks  
Fine red dashed lines indicate selected fence lines  
Revisions shown in purple and woodland compiled from  
aerial photographs taken 1979 and other sources  
This information not field checked. Map edited 1982



ROAD CLASSIFICATION	
Heavy-duty	Light-duty
Medium-duty	Unimproved dirt
U. S. Route	State Route

THIS MAP COMPLIES WITH NATIONAL MAP ACCURACY STANDARDS  
FOR SALE BY U. S. GEOLOGICAL SURVEY, DENVER, COLORADO 80225, OR RESTON, VIRGINIA 22092  
A FOLDER DESCRIBING TOPOGRAPHIC MAPS AND SYMBOLS IS AVAILABLE ON REQUEST

3099-414

ART, TEX.  
N3037.5—W9900/7.5  
1967  
PHOTOREVISED 1982  
DMA 6145 II NE—SERIES V882

RETURN TO:  
USGS NMD HISTORICAL MAP ARCHIVES

MAR 3 1983  
FBI NEW YORK  
FBI NEW YORK  
FBI NEW YORK