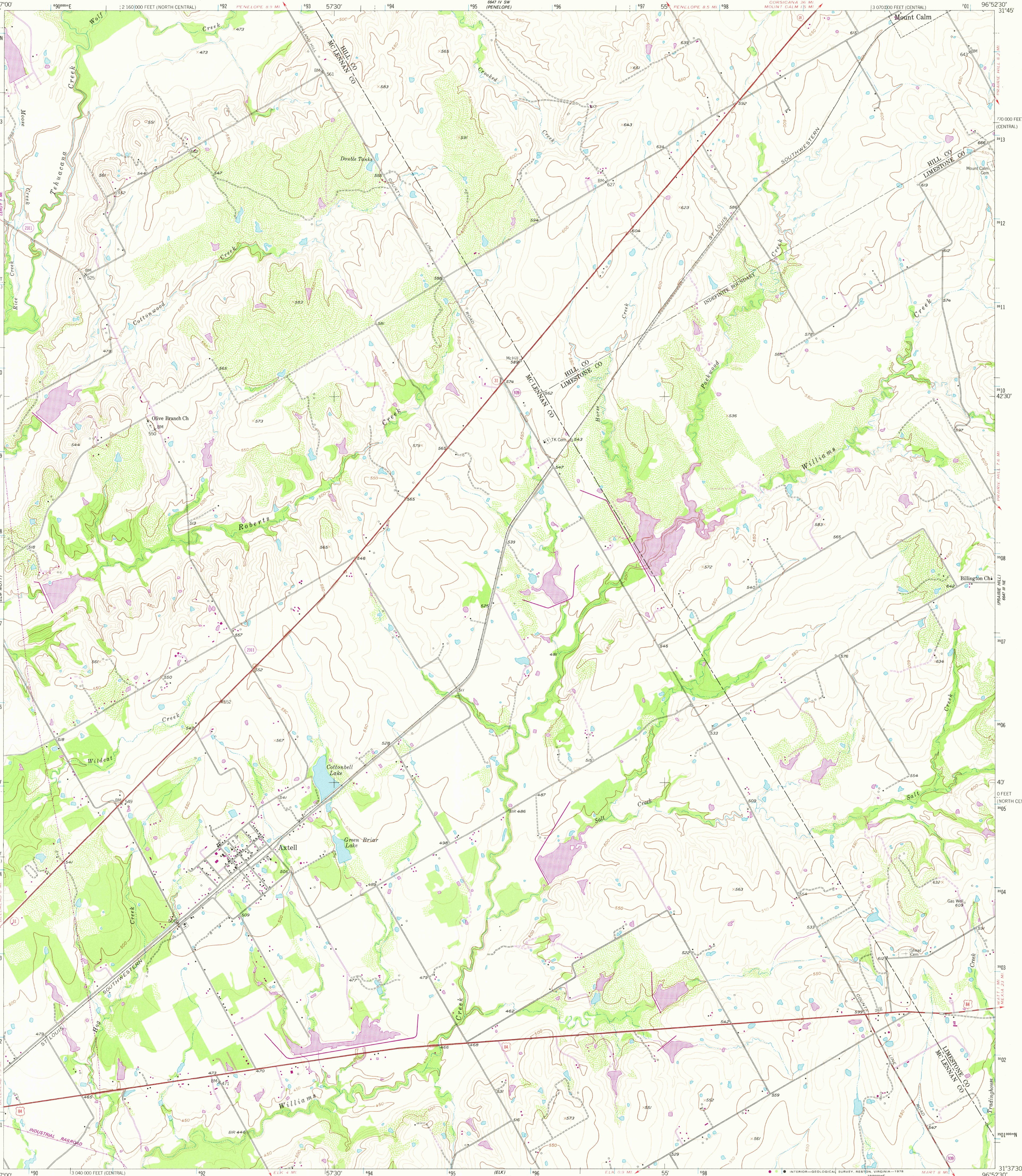


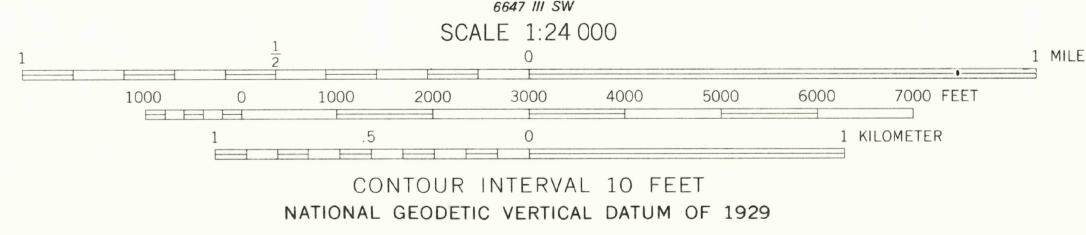
UNITED STATES  
DEPARTMENT OF THE INTERIOR  
GEOLOGICAL SURVEY

AXTELL QUADRANGLE  
TEXAS  
7.5 MINUTE SERIES (TOPOGRAPHIC)



Mapped, edited, and published by the Geological Survey  
Control by USGS and USC&GS  
Topography from aerial photographs by multiplex methods  
Aerial photographs taken 1955. Field check 1956  
Polyconic projection, 1927 North American datum  
10,000-foot grid based on Texas coordinate system,  
central and north central zones  
1000-meter Universal Transverse Mercator grid ticks,  
zone 14, shown in blue  
Revision shown in purple compiled from aerial photographs  
taken 1976 and other source data. This information not  
field checked. Map edited 1978

UTM GRID AND 1978 MAGNETIC NORTH  
DECLINATION AT CENTER OF SHEET



THIS MAP COMPLIES WITH NATIONAL MAP ACCURACY STANDARDS  
FOR SALE BY U.S. GEOLOGICAL SURVEY, DENVER, COLORADO 80225, OR RESTON, VIRGINIA 22092  
A FOLDER DESCRIBING TOPOGRAPHIC MAPS AND SYMBOLS IS AVAILABLE ON REQUEST



QUADRANGLE LOCATION

ROAD CLASSIFICATION  
Primary highway, all weather, hard surface  
Secondary highway, all weather, hard surface  
Light-duty road, all weather, improved surface  
Unimproved road, fair or dry weather  
Interstate Route  
U. S. Route  
State Route

USGS  
Historical File  
Topographic Division

AXTELL, TEX.  
N3137.5-W9652.5/7.5  
1956  
PHOTOREVISED 1978  
AMS 6647 III NW-SERIES 7882

MAR 17 1978

2800