

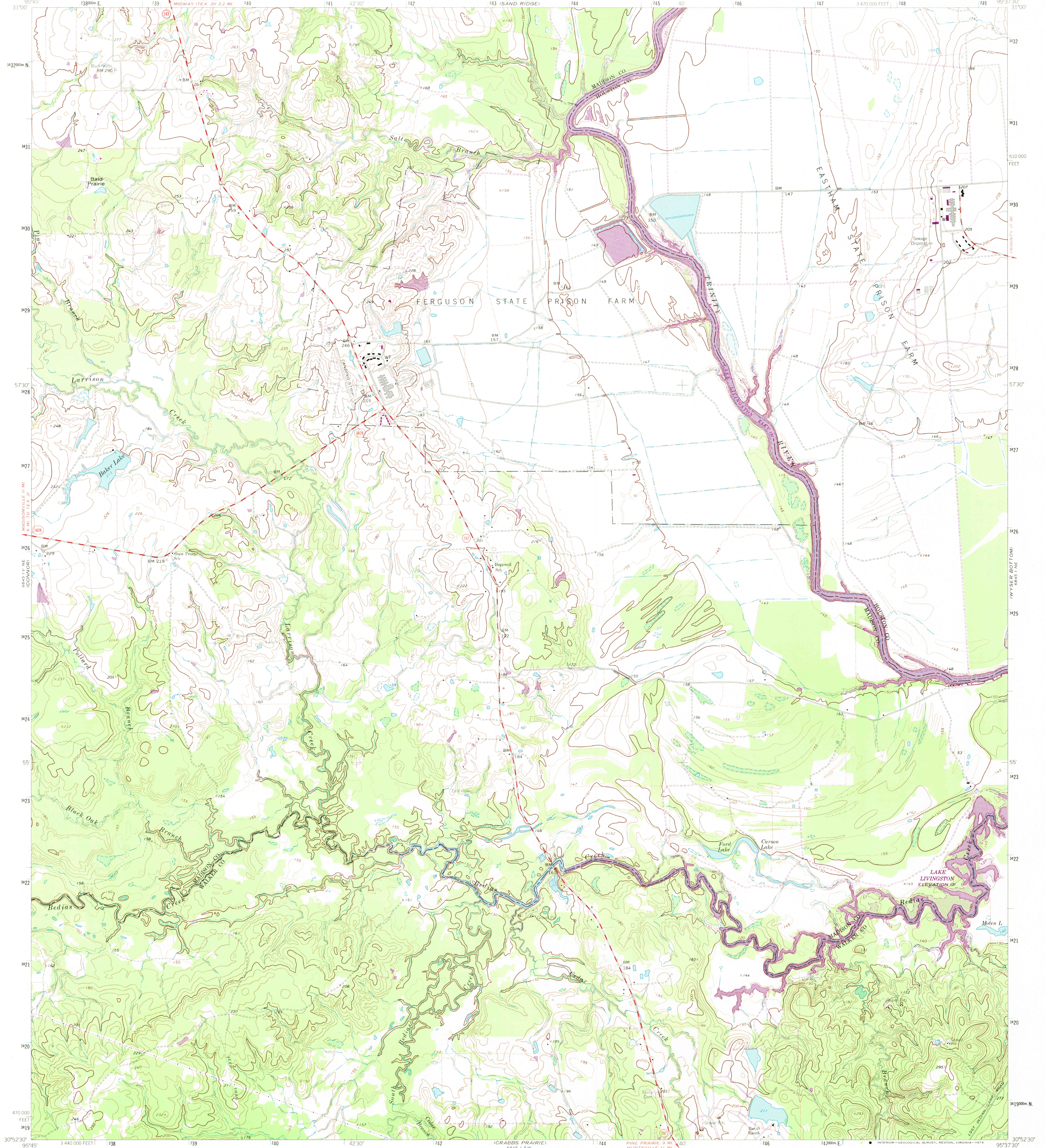
6845 11 SE  
ELWOOD

UNITED STATES  
DEPARTMENT OF THE INTERIOR  
GEOLOGICAL SURVEY

STATE OF TEXAS  
TEXAS WATER DEVELOPMENT BOARD

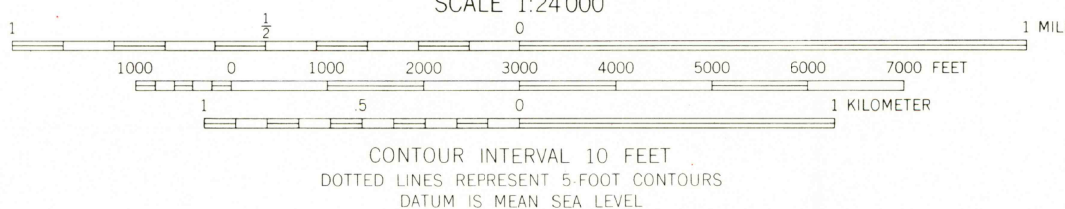
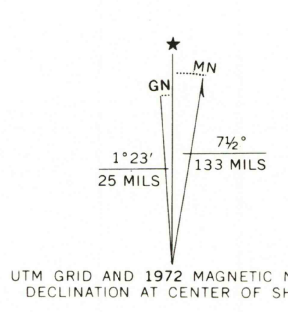
BAKER LAKE QUADRANGLE  
TEXAS  
7.5 MINUTE SERIES (TOPOGRAPHIC)

6845 11 SE  
(WELDON)



(STEEP BRANCH)  
6845 11 SE

Mapped, edited, and published by the Geological Survey  
Control by USGS, USC&GS, and USCE  
Topography by photogrammetric methods from aerial  
photographs taken 1960. Field checked 1962  
Polyconic projection. 1927 North American datum  
10,000-foot grid based on Texas coordinate system, central zone  
1000 meter Universal Transverse Mercator grid ticks,  
zone 15, shown in blue  
Fine red dashed lines indicate selected fence lines  
Revisions shown in purple and recompilation of woodland areas  
compiled from aerial photographs taken 1972. This information  
not field checked  
Areas covered by dashed light-purple pattern are subject  
to controlled inundation



ROAD CLASSIFICATION  
Primary highway, hard surface  
Secondary highway, hard surface  
Light-duty road, hard or improved surface  
Unimproved road  
Interstate Route  
U. S. Route  
State Route

USGS  
Historical File  
Topographic Division

BAKER LAKE, TEX.  
N3052.5 - W9537.5/7.5

1962  
PHOTO REVIS 1972  
AMS 6845 11 NW - SERIES V882

MAY 22 1974  
2595

THIS MAP COMPLIES WITH NATIONAL MAP ACCURACY STANDARDS  
FOR SALE BY U. S. GEOLOGICAL SURVEY, DENVER, COLORADO 80225, OR RESTON, VIRGINIA 22092  
A FOLDER DESCRIBING TOPOGRAPHIC MAPS AND SYMBOLS IS AVAILABLE ON REQUEST