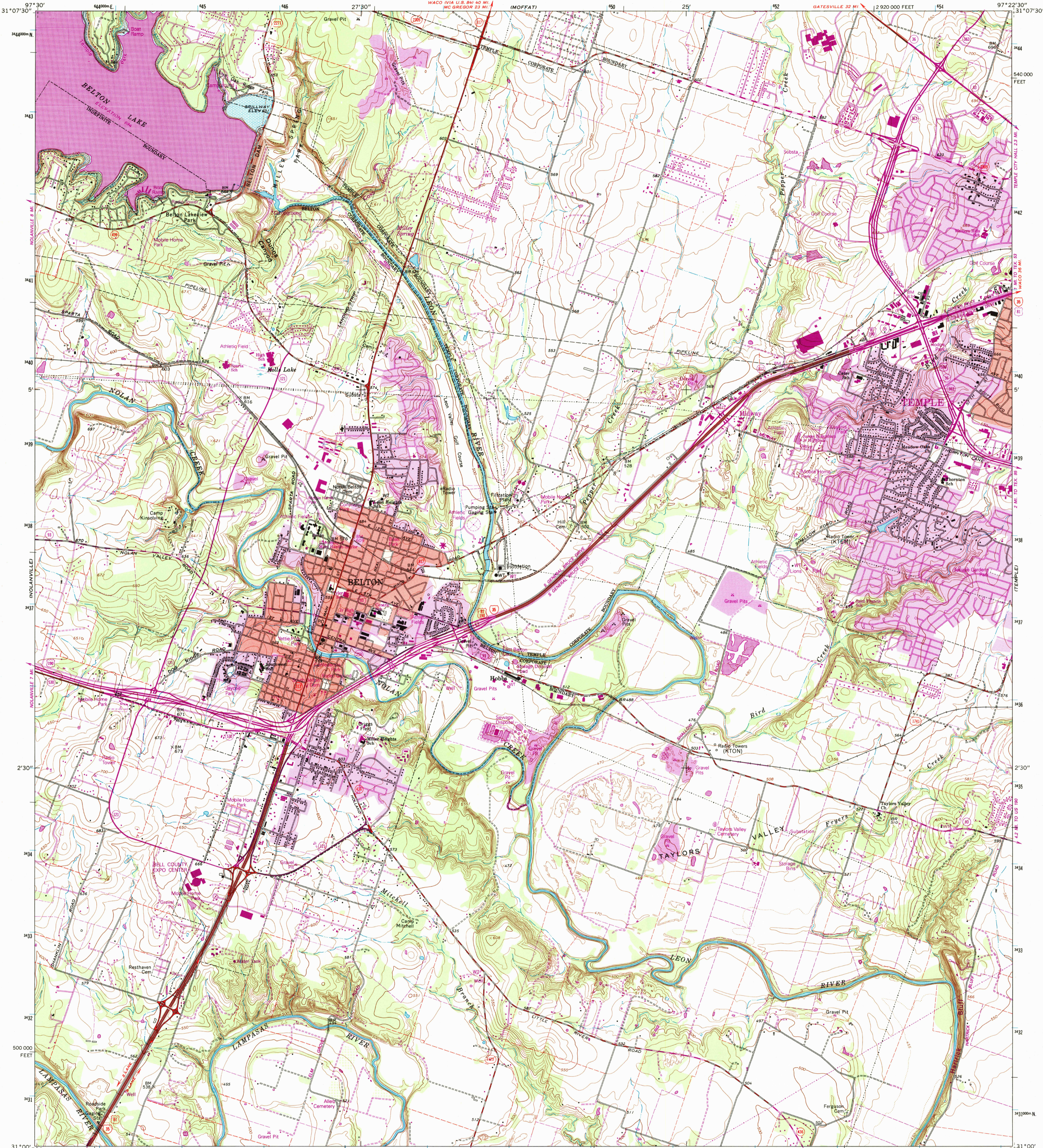


(BLAND)

UNITED STATES
DEPARTMENT OF THE INTERIOR
GEOLOGICAL SURVEY

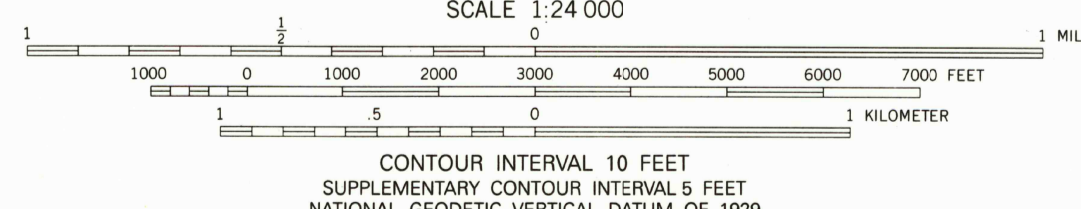
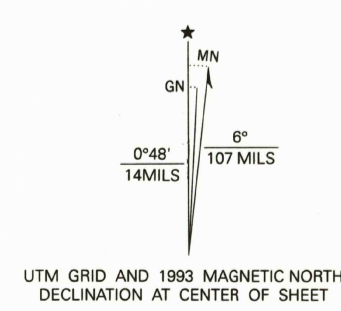
BELTON QUADRANGLE
TEXAS-BELL CO.
7.5 MINUTE SERIES (TOPOGRAPHIC)

(TROY)



(SALADO)

Produced by the United States Geological Survey
Control by USGS and NOS/NOAA
Compiled from aerial photographs taken 1964. Revisions shown
in purple compiled from aerial photographs taken 1990 and
other sources and has been field checked. Map edited 1993
Conflicts may exist between some updated features and previously
mapped contours
North American Datum of (NAD 27). Projection and
10000-foot ticks: Texas Coordinate System, central zone
(Lambert Conformal Conic)
Blue 1000-meter Universal Transverse Mercator ticks, zone 14
North American Datum of 1983 (NAD 83) is shown by dashed
corner ticks. The values of the shift between NAD 27 and NAD 83
for 7.5-minute intersections are given in USGS Bulletin 1875.
Areas covered by dashed light-blue pattern are subject to
controlled inundation

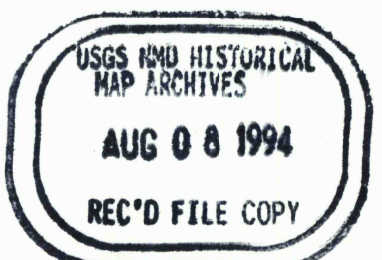


THIS MAP COMPLIES WITH NATIONAL MAP ACCURACY STANDARDS
FOR SALE BY U. S. GEOLOGICAL SURVEY, DENVER, COLORADO 80225, OR RESTON, VIRGINIA 22092
A FOLDER DESCRIBING TOPOGRAPHIC MAPS AND SYMBOLS IS AVAILABLE ON REQUEST



QUADRANGLE LOCATION

ROAD CLASSIFICATION	
Primary highway, hard surface	Light-duty road, hard or improved surface
Secondary highway, hard surface	Unimproved road
Interstate Route	U. S. Route
	State Route



BELTON, TEX.
31097-A4-TF-024
1985
REVISED 1993
DMA 6546 III SW-SERIES V882

3197-122