

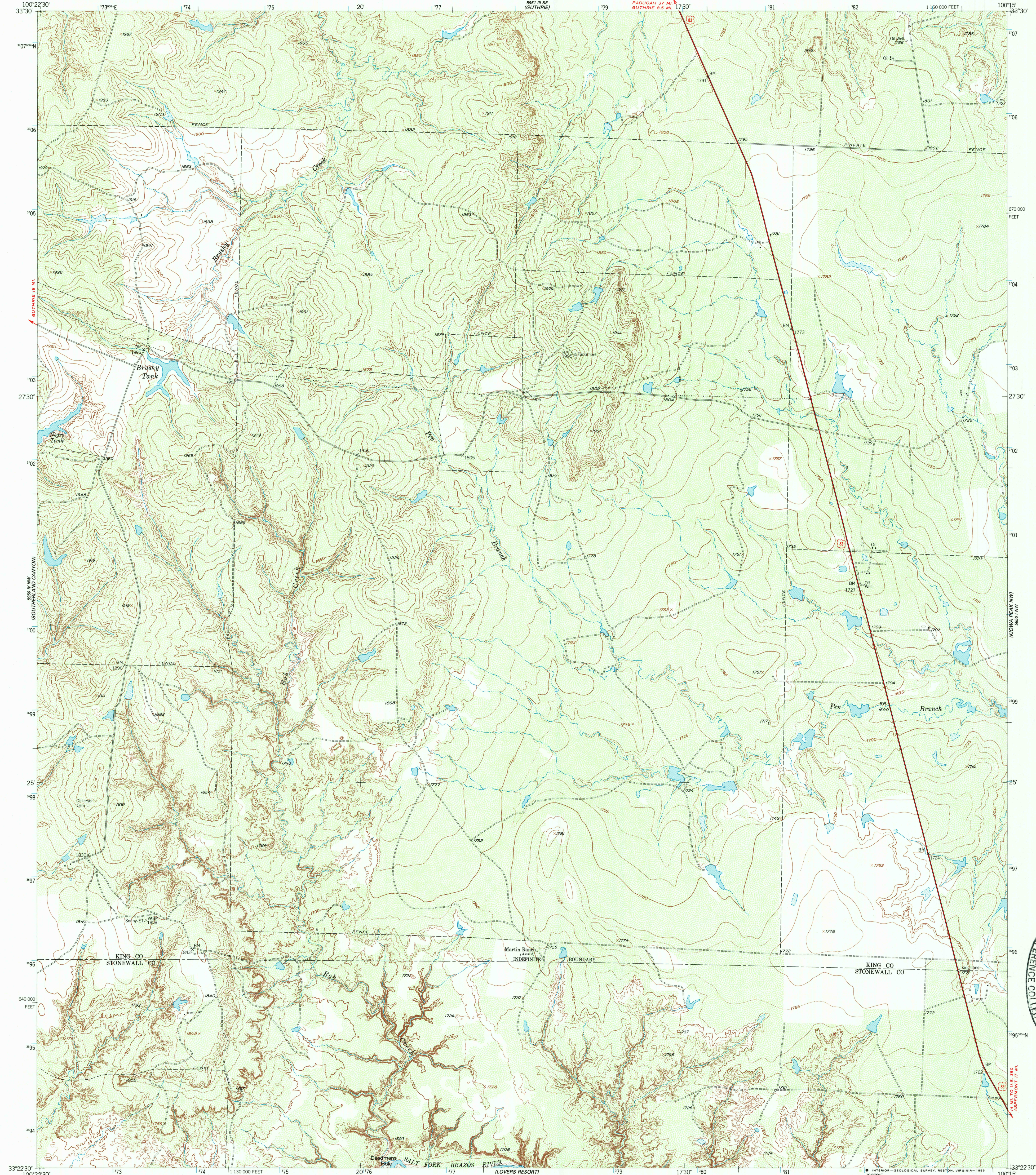
889 IV NW
SOUTHERLAND CANYON

UNITED STATES
DEPARTMENT OF THE INTERIOR
GEOLOGICAL SURVEY

STATE OF TEXAS
BOARD OF WATER ENGINEERS

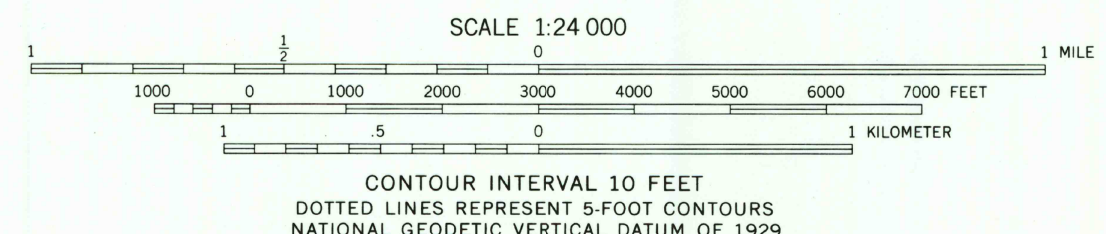
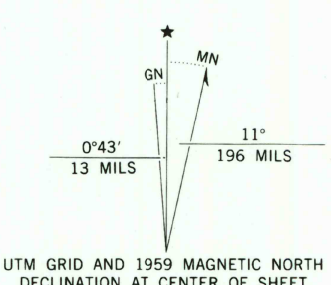
BOB CREEK QUADRANGLE
TEXAS
7.5 MINUTE SERIES (TOPOGRAPHIC)

889 IV SE
DARK CANYON



889 IV NW
SOUTHERLAND CANYON

Mapped, edited, and published by the Geological Survey
Control by USGS and USC&GS
Topography from aerial photographs by photogrammetric methods
Aerial photographs taken 1958. Field check 1959
Polyconic projection, 1927 North American Datum
10,000-foot grid based on Texas coordinate system,
north central zone
1000-meter Universal Transverse Mercator grid ticks,
zone 14, shown in blue
Unchecked elevations are shown in brown
To place on the predicted North American Datum 1983
move the projection lines 6 meters south and
36 meters east as shown by dashed corner ticks



THIS MAP COMPLIES WITH NATIONAL MAP ACCURACY STANDARDS
FOR SALE BY U. S. GEOLOGICAL SURVEY, DENVER, COLORADO 80225, OR RESTON, VIRGINIA 22092
A FOLDER DESCRIBING TOPOGRAPHIC MAPS AND SYMBOLS IS AVAILABLE ON REQUEST



QUADRANGLE LOCATION
3300-134

ROAD CLASSIFICATION
Heavy-duty ——— Light-duty ———
Unimproved dirt - - - - -
U.S. Route

Map photoinspected 1978
No major culture or drainage changes observed

BOB CREEK, TEX.
33100-D3-TF-024
1959
PHOTOINSPECTED 1978
DMA 5950 IV NE-SERIES V882

USGS NWU RESEARCH
OCT 31 1985
REFERENCE COLLECTION

889 IV NW
SOUTHERLAND CANYON