

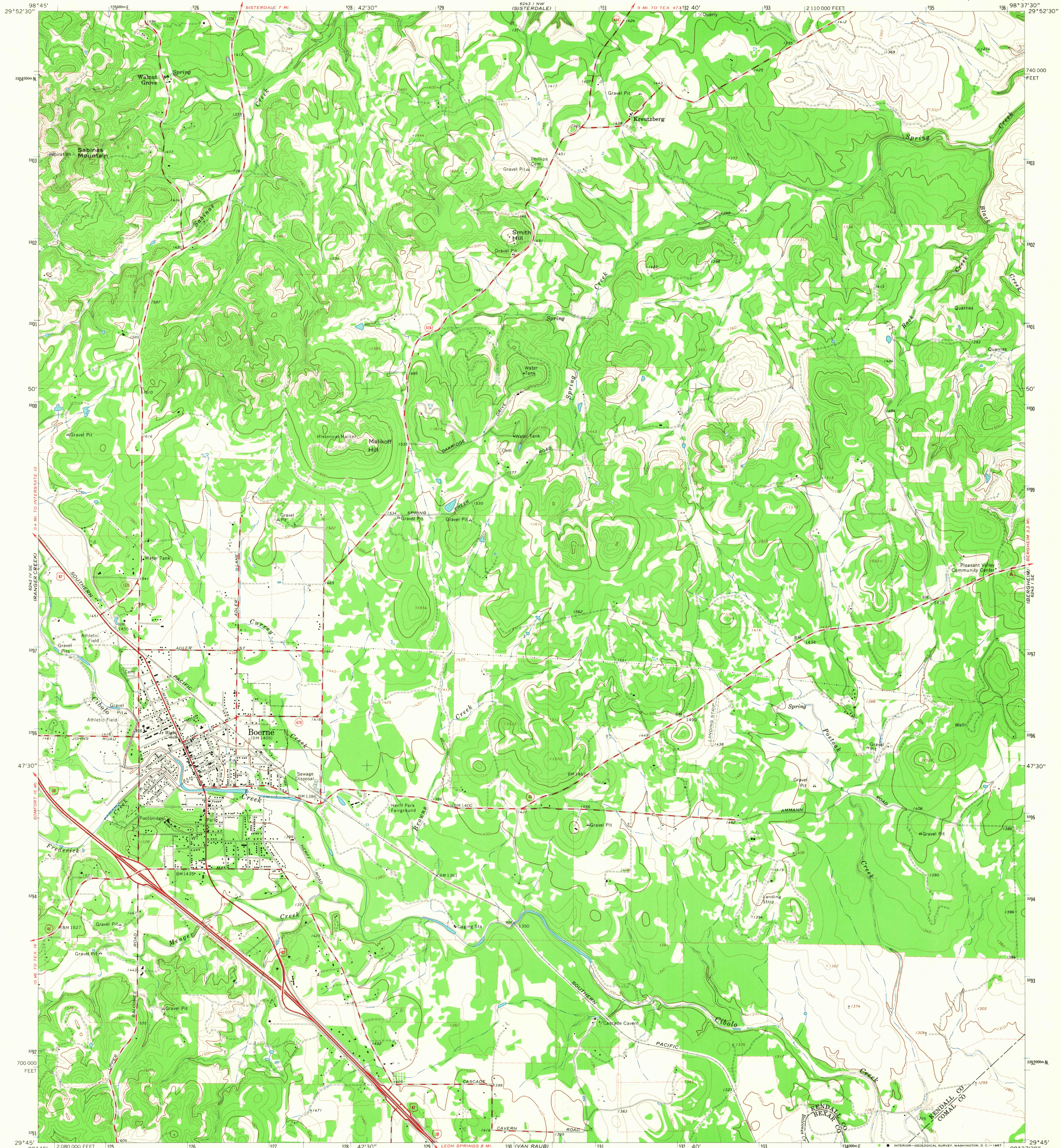
ROAD JUNE
(HAWKING)

UNITED STATES
DEPARTMENT OF THE INTERIOR
GEOLOGICAL SURVEY

STATE OF TEXAS
TEXAS WATER DEVELOPMENT BOARD

BOERNE QUADRANGLE
TEXAS
7.5 MINUTE SERIES (TOPOGRAPHIC)

6243 (NE
(MENDALLA)



Mapped, edited, and published by the Geological Survey

Control by USGS and USC&GS

Topography by photogrammetric methods from aerial

photographs taken 1963. Field checked 1964

Polyconic projection. 1927 North American datum

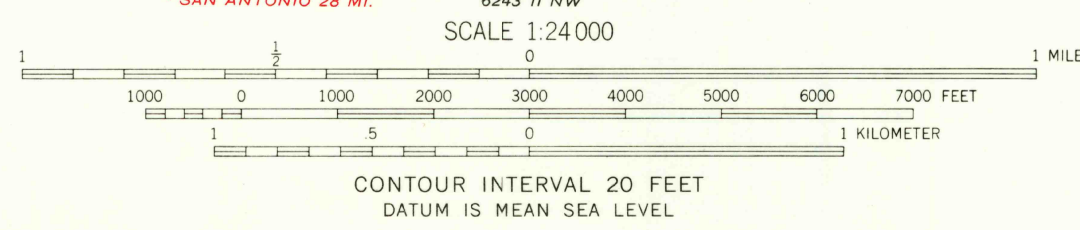
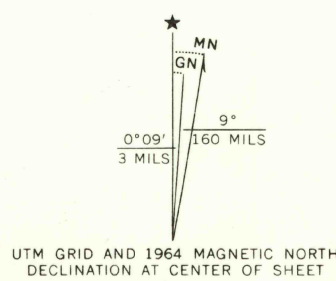
10,000-foot grid based on Texas coordinate system,

south central zone

1000-meter Universal Transverse Mercator grid ticks,

zone 14, shown in blue

Fire red dashed lines indicate selected fence lines



U.S.G.S.
FILE COPY
TOPOGRAPHIC DIVISION

ROAD CLASSIFICATION	
Heavy-duty	Light-duty
Medium-duty	Unimproved dirt
Interstate Route	U. S. Route
	State Route

BOERNE, TEX.
N2945-W9837.5/7.5

1964

AMS 6243 1 SW-SERIES V882

THIS MAP COMPLIES WITH NATIONAL MAP ACCURACY STANDARDS
FOR SALE BY U. S. GEOLOGICAL SURVEY, DENVER, COLORADO 80225, OR WASHINGTON, D. C. 20242
A FOLDER DESCRIBING TOPOGRAPHIC MAPS AND SYMBOLS IS AVAILABLE ON REQUEST

2555
FEB 8 1968