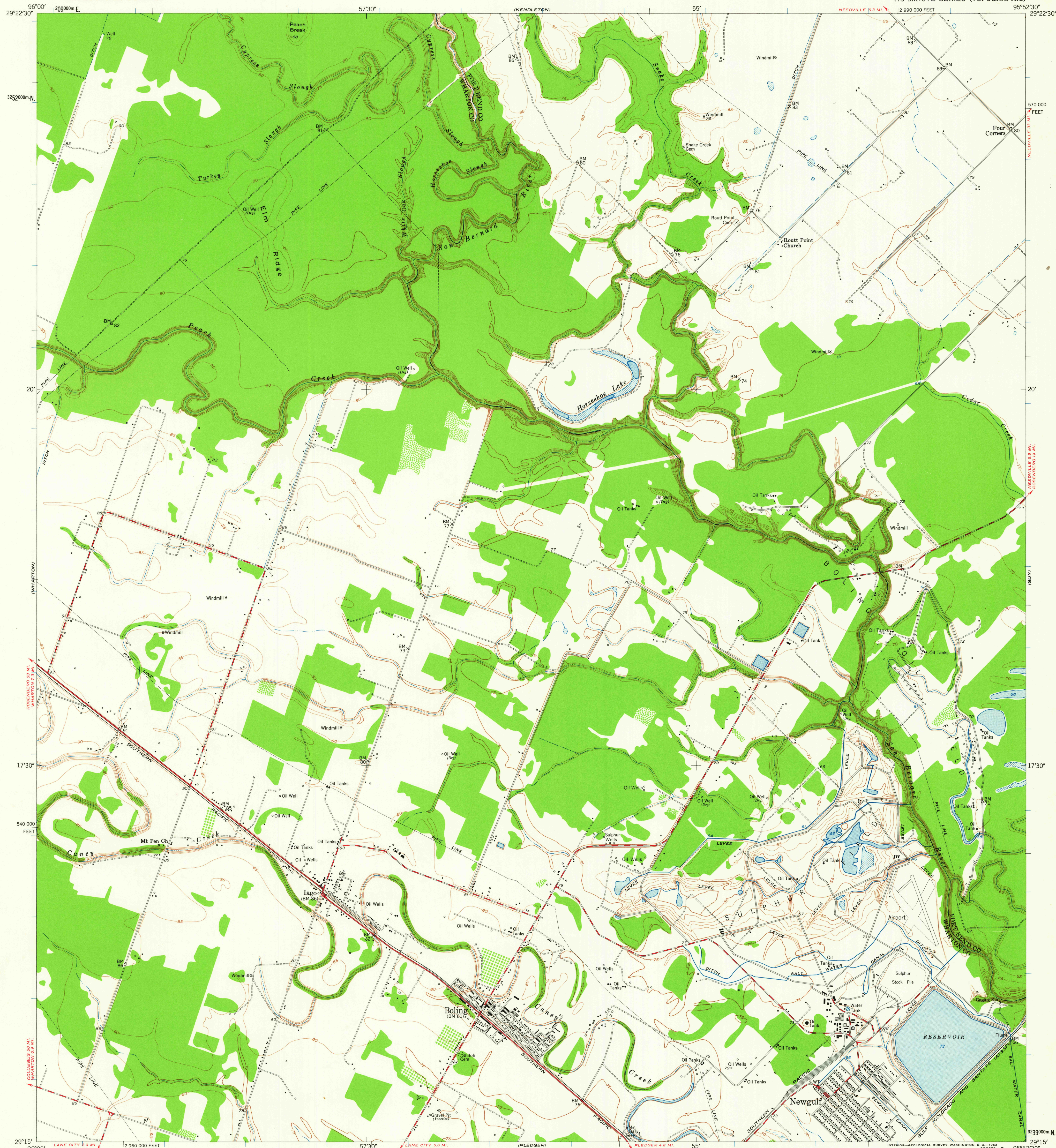


UNITED STATES
DEPARTMENT OF THE INTERIOR
GEOLOGICAL SURVEY

BOLING QUADRANGLE
TEXAS
7.5 MINUTE SERIES (TOPOGRAPHIC)



Mapped, edited, and published by the Geological Survey
Control by USGS, USC&GS, and Texas GLO—
State Reclamation Department
Culture and drainage in part compiled from aerial photographs
taken 1951. Topography by plane-table surveys by Texas GLO—
State Reclamation Department 1939, and by the Geological
Survey 1953
Polyconic projection, 1927 North American datum
10,000-foot grid based on Texas coordinate system,
south central zone
1000-meter Universal Transverse Mercator grid ticks,
zone 15, shown in blue

APPROXIMATE MEAN
DECLINATION, 1953

SCALE 1:24000
1 0 1000 2000 3000 4000 5000 6000 7000 FEET
1 5 0 5 10 KILOMETER
CONTOUR INTERVAL 5 FEET
DATUM IS MEAN SEA LEVEL

THIS MAP COMPLIES WITH NATIONAL MAP ACCURACY STANDARDS
FOR SALE BY U. S. GEOLOGICAL SURVEY, DENVER 25, COLORADO OR WASHINGTON 25, D. C.
A FOLDER DESCRIBING TOPOGRAPHIC MAPS AND SYMBOLS IS AVAILABLE ON REQUEST



QUADRANGLE LOCATION

ROAD CLASSIFICATION
Heavy duty ———— Light duty ————
Medium duty ———— Unimproved dirt ————

BOLING, TEX.
N2915-W9552.5/7.5
1953