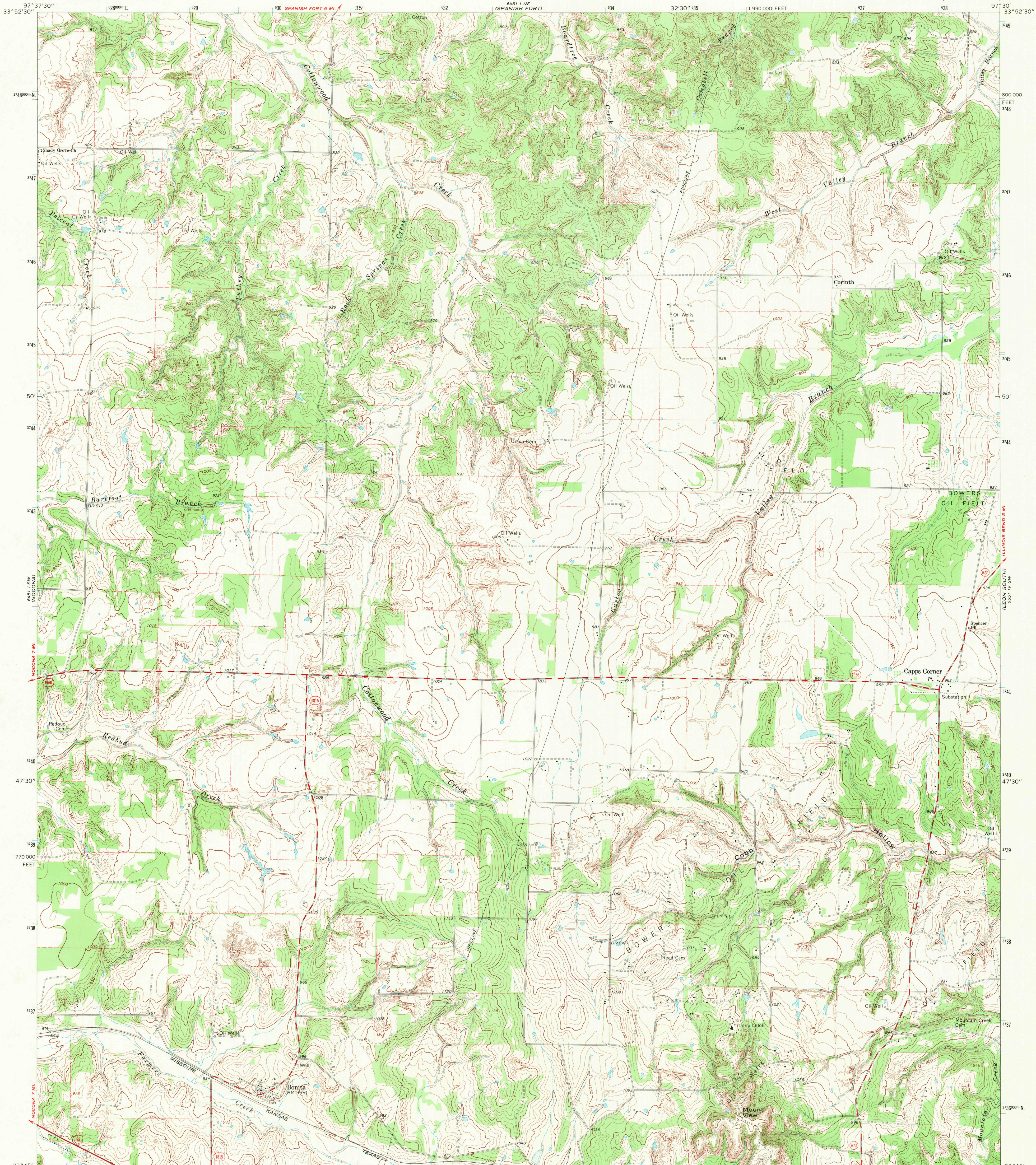


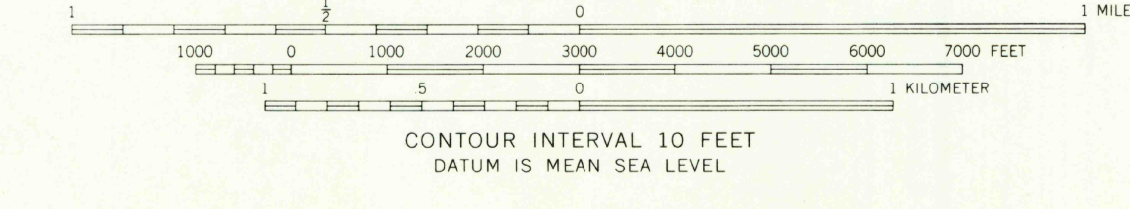
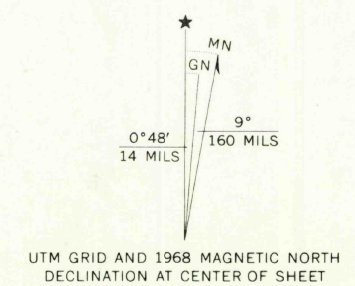
PRAIRIE VALLEY SCHOOL

UNITED STATES  
DEPARTMENT OF THE INTERIOR  
GEOLOGICAL SURVEY

BONITA QUADRANGLE  
TEXAS—MONTAGUE CO.  
7.5 MINUTE SERIES (TOPOGRAPHIC)



Maped, edited, and published by the Geological Survey  
Control by USGS and USC&GS  
Topography by photogrammetric methods from aerial  
photographs taken 1966. Field checked 1968  
Polyconic projection. 1927 North American datum  
10,000-foot grid based on Texas coordinate system,  
north central zone  
1000-meter Universal Transverse Mercator grid ticks,  
zone 14, shown in blue  
Fine red dashed lines indicate selected fence lines



ROAD CLASSIFICATION

|   |   |
|---|---|
| Primary highway, all weather,<br>hard surface   | Light-duty road, all weather,<br>improved surface |
| Secondary highway, all weather,<br>hard surface | Unimproved road, fair or dry<br>weather           |
| U. S. Route                                     | State Route                                       |

THIS MAP COMPLIES WITH NATIONAL MAP ACCURACY STANDARDS  
FOR SALE BY U. S. GEOLOGICAL SURVEY, DENVER, COLORADO 80225, OR WASHINGTON, D. C. 20242  
A FOLDER DESCRIBING TOPOGRAPHIC MAPS AND SYMBOLS IS AVAILABLE ON REQUEST

BONITA, TEX.  
N3345—W9730/7.5  
1968

SEP 10 1971  
USGS  
HISTORICAL FILE  
TOPOGRAPHIC DIVISION

AMS 6451 I SE—SERIES V88 TOPOGRAPHIC DIVISION