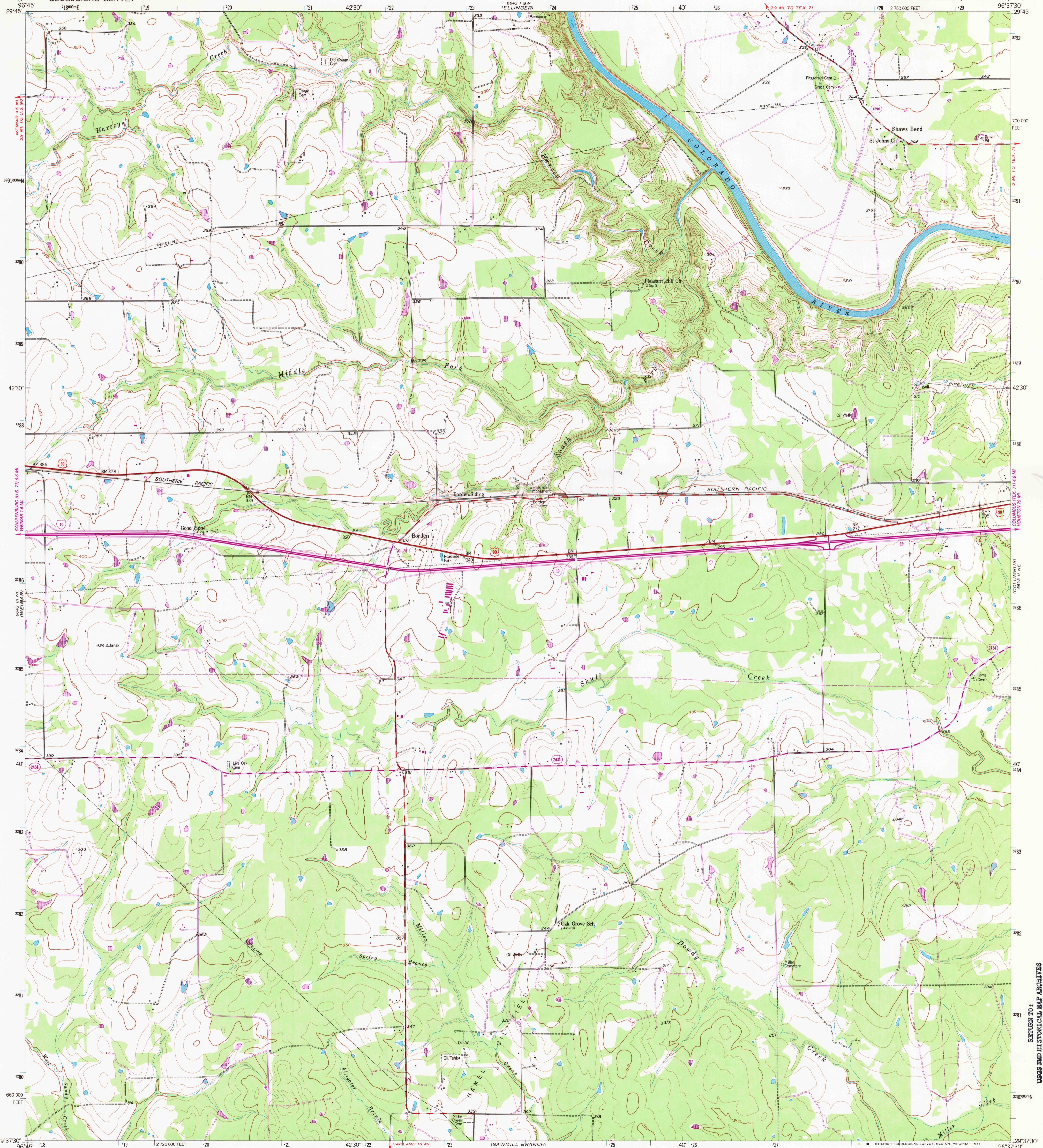


UNITED STATES  
DEPARTMENT OF THE INTERIOR  
GEOLOGICAL SURVEY

BORDEN QUADRANGLE  
TEXAS-COLORADO CO.  
7.5 MINUTE SERIES (TOPOGRAPHIC)



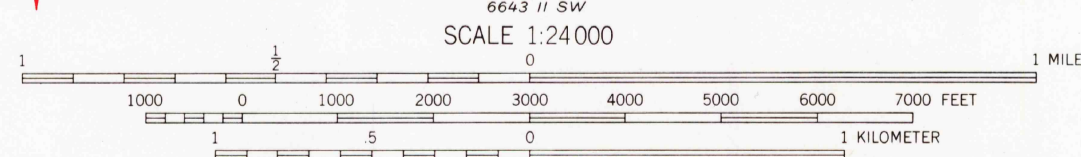
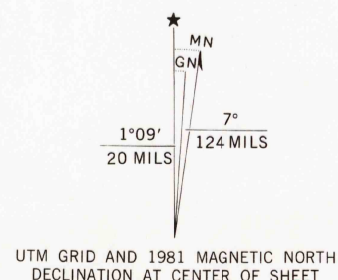
Mapped, edited, and published by the Geological Survey  
Control by USGS and NOS/NOAA

Topography from aerial photographs by ER-55 plotter and by  
plane-table surveys 1957. Aerial photographs taken 1956-1957

Polyconic projection. 1927 North American datum  
10,000-foot grid based on Texas coordinate system,  
south central zone  
1000-meter Universal Transverse Mercator grid ticks,  
zone 14, shown in blue

To place on the predicted North American Datum 1983  
move the projection lines 20 meters south and  
25 meters east as shown by dashed corner ticks

Revisions shown in purple and woodland compiled from  
aerial photographs taken 1979 and other source data  
This information not field checked. Map edited 1981



CONTOUR INTERVAL 10 FEET  
DASHED LINES REPRESENT 5-FOOT CONTOURS  
NATIONAL GEODETIC VERTICAL DATUM OF 1929  
THIS MAP COMPLIES WITH NATIONAL MAP ACCURACY STANDARDS  
FOR SALE BY U.S. GEOLOGICAL SURVEY, DENVER, COLORADO 80225, OR RESTON, VIRGINIA 22092  
A FOLDER DESCRIBING TOPOGRAPHIC MAPS AND SYMBOLS IS AVAILABLE ON REQUEST



QUADRANGLE LOCATION

ROAD CLASSIFICATION	
Heavy-duty	Light-duty
Medium-duty	Unimproved dirt
U. S. Route	State Route
	Interstate Route

SEP 1 1980

BORDEN, TEX.  
N2937.5-W9637.5/7.5

1957  
PHOTOREVISED 1981  
DMA 6643 II NW-SERIES V882

RETURN TO:  
USGS AND HISTORICAL MAP ARCHIVES