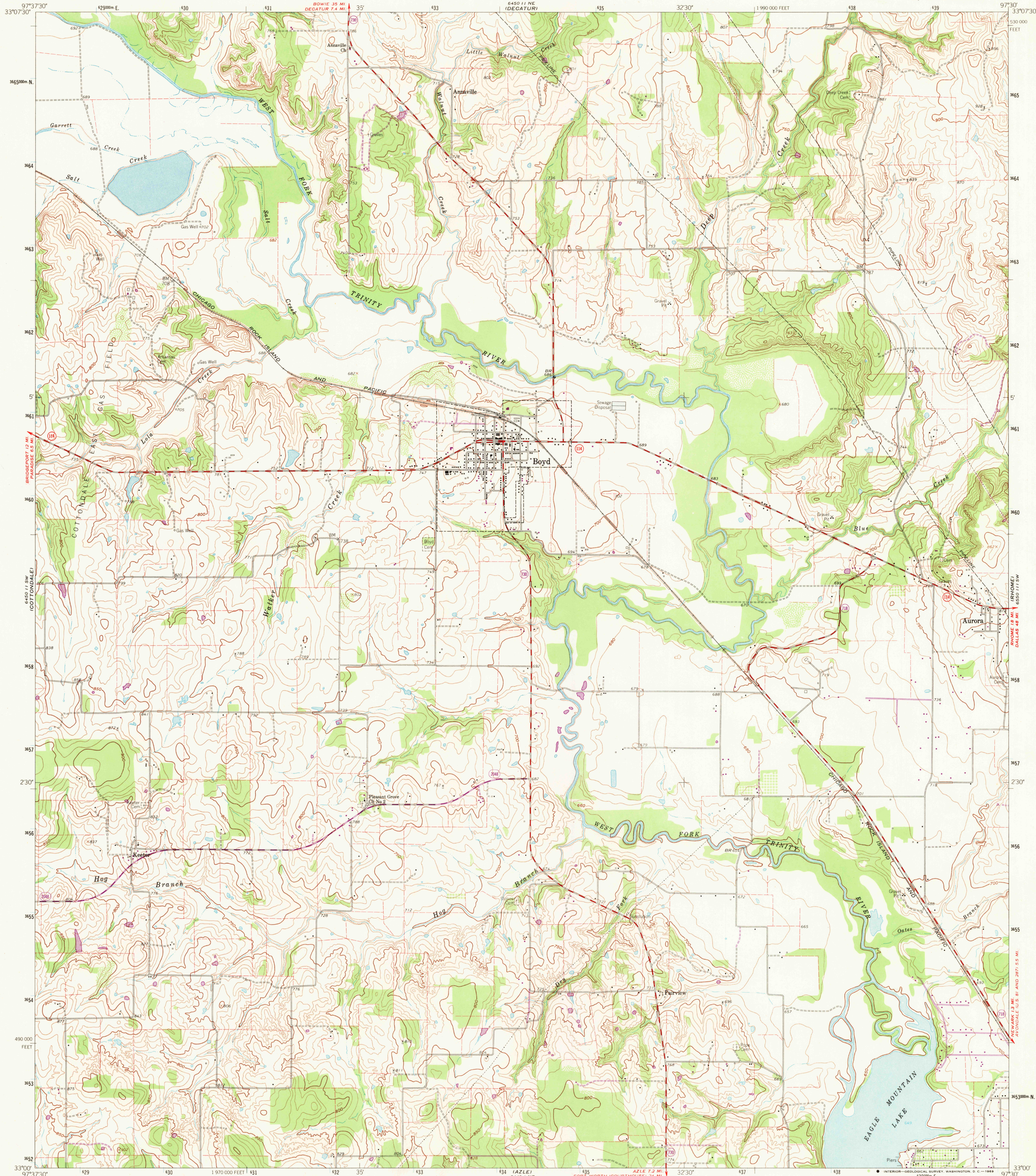
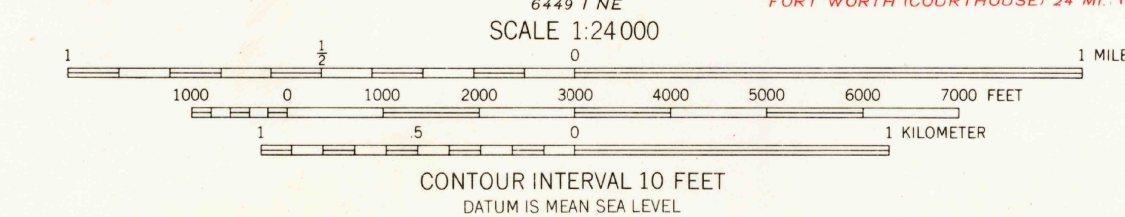
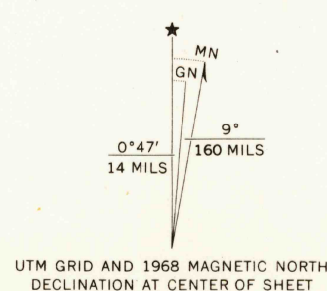


UNITED STATES
DEPARTMENT OF THE INTERIOR
GEOLOGICAL SURVEY

BOYD QUADRANGLE
TEXAS—WIS. CO.
7.5 MINUTE SERIES (TOPOGRAPHIC)
SE/4 BOYD 15' QUADRANGLE



Mapped, edited, and published by the Geological Survey
Control by USGS and USC&GS
Topography from aerial photographs by photogrammetric methods
Aerial photographs taken 1957. Field check 1960
Polyconic projection. 1927 North American datum
10,000 foot grid based on Texas coordinate system,
north central zone
1000 meter Universal Transverse Mercator grid ticks,
zone 14, shown in blue
Fine red dashed lines indicate selected fence and field lines
where generally visible on aerial photographs
This information is unchecked
Revisions shown in purple compiled by the Geological Survey from
aerial photographs taken 1968. This information not field checked



THIS MAP COMPLIES WITH NATIONAL MAP ACCURACY STANDARDS
FOR SALE BY U.S. GEOLOGICAL SURVEY, DENVER, COLORADO 80225, OR WASHINGTON, D.C. 20242
A FOLDER DESCRIBING TOPOGRAPHIC MAPS AND SYMBOLS IS AVAILABLE ON REQUEST

ROAD CLASSIFICATION
Medium-duty ——— Light-duty ———
Unimproved dirt ———
State Route ———



U.S.G.S.
FILE COPY
TOPOGRAPHIC DIVISION

BOYD, TEX.
N3300—W9730/7.5
SE/4 BOYD 15' QUADRANGLE
1960
PHOTOREVISED 1968
AMS 6450 11 SE—SERIES V882

MAR 4 1969