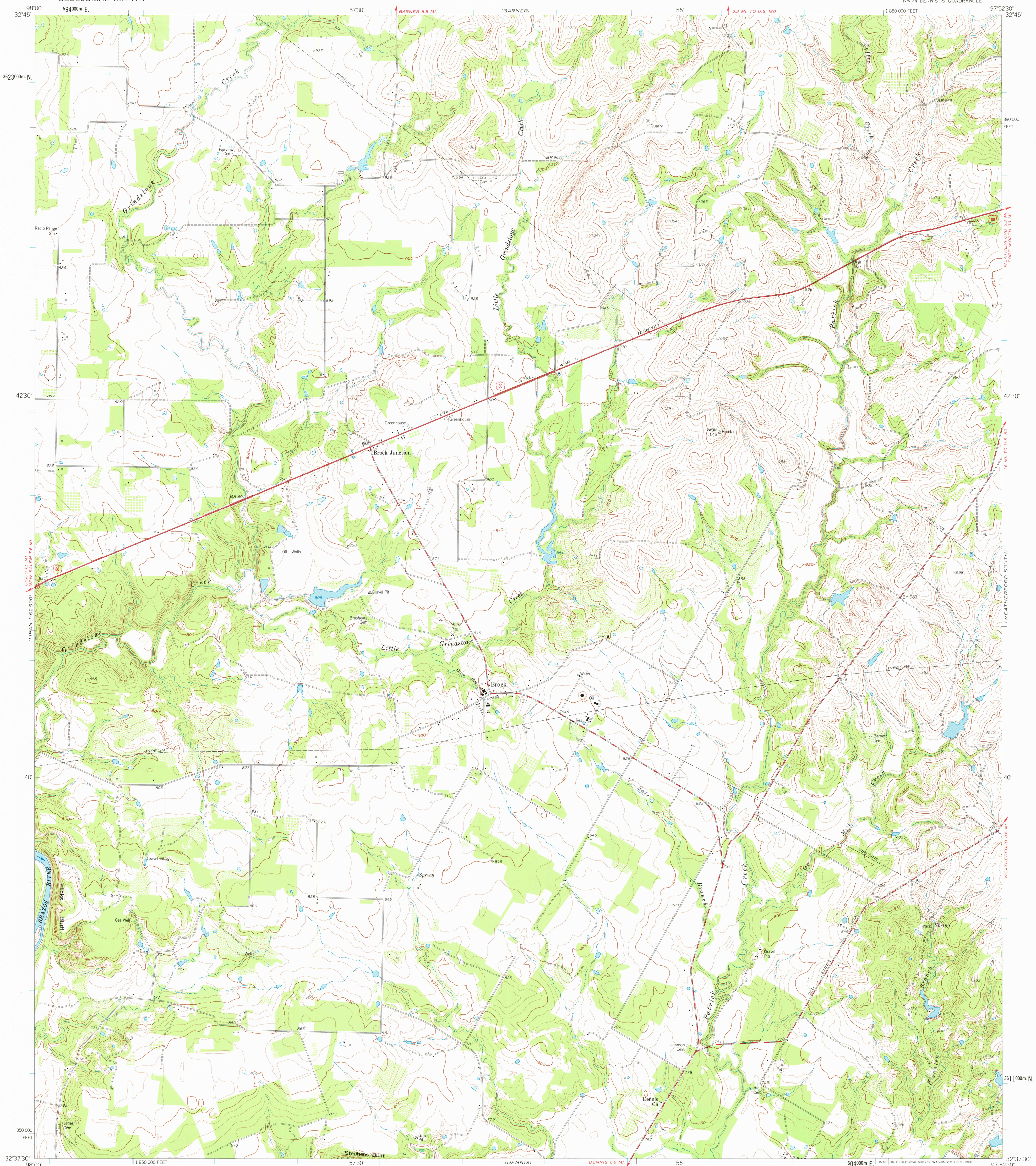


MINERAL WELLS
162500

UNITED STATES
DEPARTMENT OF THE INTERIOR
GEOLOGICAL SURVEY

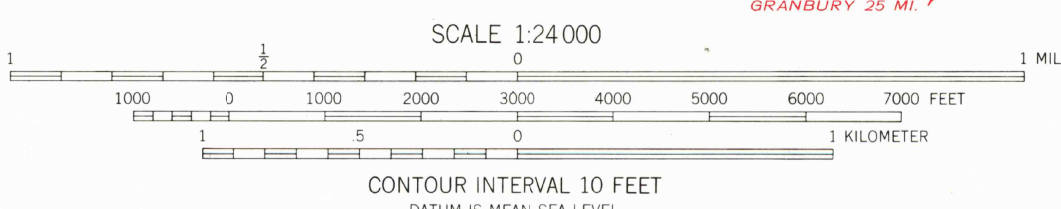
BROCK QUADRANGLE
TEXAS-PARKER CO.
7.5 MINUTE SERIES (TOPOGRAPHIC)
NW 1/4 DENNIS 15 QUADRANGLE

WEATHERFORD
NORTH



Mapped, edited, and published by the Geological Survey
Control by USGS and USC&GS
Topography from aerial photographs by photogrammetric methods
and by planetable surveys 1959. Aerial photographs taken 1957
Polyconic projection. 1927 North American datum
10,000-foot grid based on Texas coordinate system,
north central zone
1000-meter Universal Transverse Mercator grid ticks,
zone 14, shown in blue

TRUE NORTH
MAGNETIC NORTH
APPROXIMATE MEAN
DECLINATION, 1959



THIS MAP COMPLIES WITH NATIONAL MAP ACCURACY STANDARDS
FOR SALE BY U.S. GEOLOGICAL SURVEY, DENVER 25, COLORADO OR WASHINGTON 25, D.C.
A FOLDER DESCRIBING TOPOGRAPHIC MAPS AND SYMBOLS IS AVAILABLE ON REQUEST



ROAD CLASSIFICATION
Heavy-duty ——— Light-duty ———
Medium-duty ——— Unimproved dirt ———
U.S. Route

USGS
Historical File
Topographic Division

BROCK, TEX.
NW 1/4 DENNIS 15 QUADRANGLE
N32375-W97525/7.5
1959

MAR 15 1977
1200