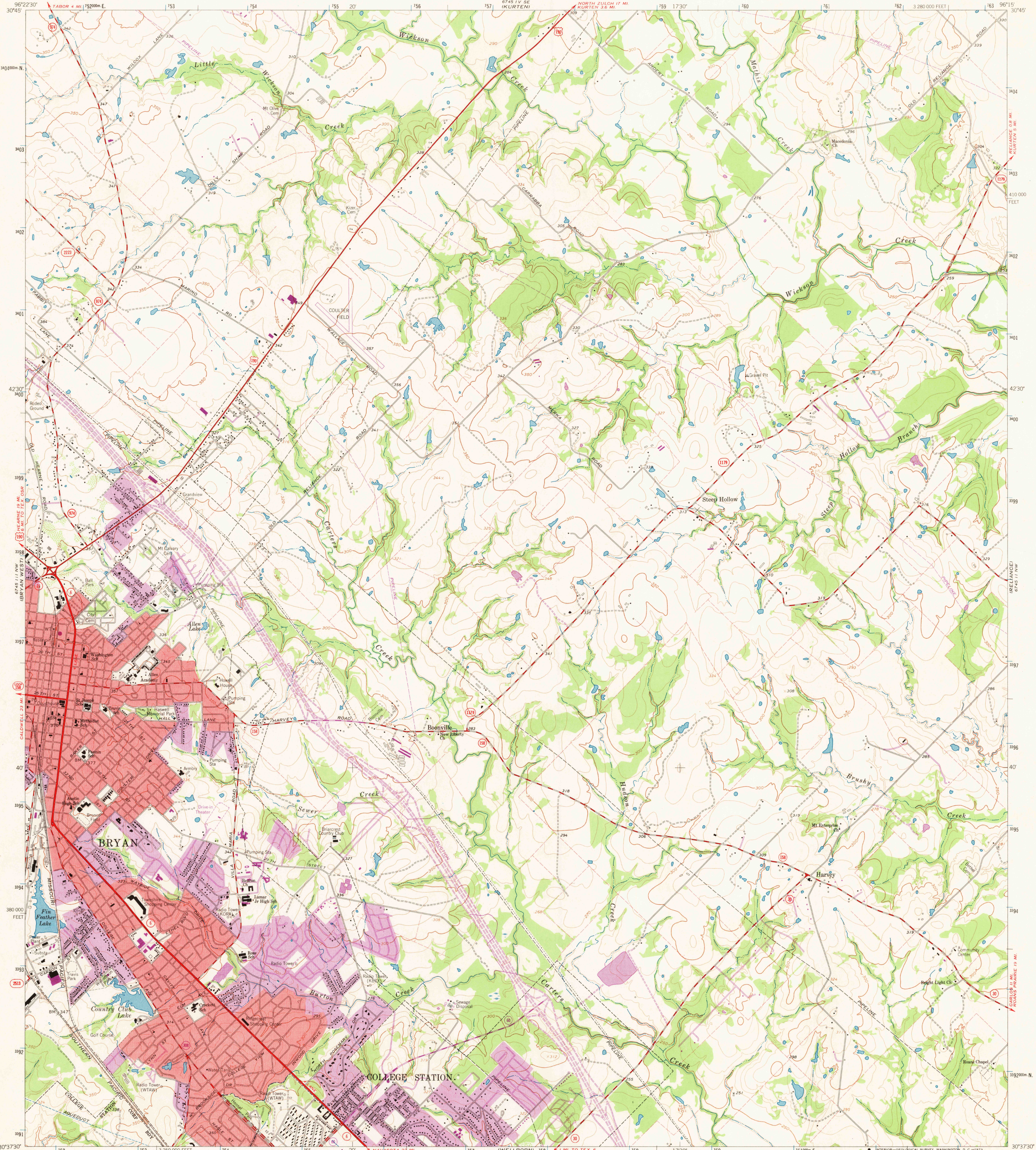


UNITED STATES  
DEPARTMENT OF THE INTERIOR  
GEOLOGICAL SURVEY

BRYAN EAST QUADRANGLE  
TEXAS-BRAZOS CO.  
7.5 MINUTE SERIES (TOPOGRAPHIC)



Mapped, edited, and published by the Geological Survey

Control by USGS and USC&GS

Topography by photogrammetric methods from aerial photographs taken 1961. Field checked 1962

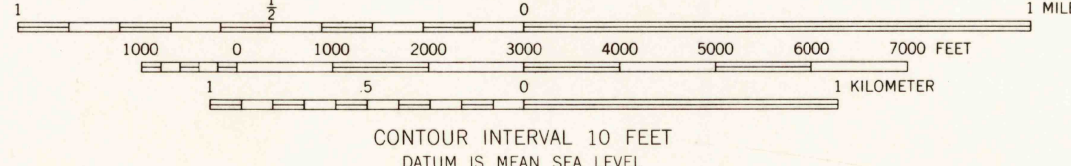
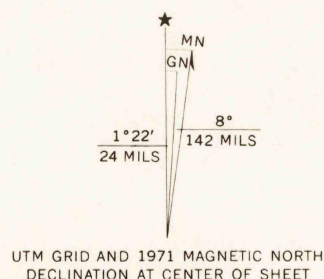
Polyconic projection. 1927 North American datum  
10,000-foot grid based on Texas coordinate system, central zone  
1000-meter Universal Transverse Mercator grid ticks, zone 14, shown in blue

Red tint indicates area in which only landmark buildings are shown

Fine red dashed lines indicate selected fence lines

Revisions shown in purple compiled from aerial photographs taken 1971. This information not field checked

Purple tint indicates extension of urban areas



CONTOUR INTERVAL 10 FEET  
DATUM IS MEAN SEA LEVEL



QUADRANGLE LOCATION

USGS  
HISTORICAL FILE  
TOPOGRAPHIC DIVISION

ROAD CLASSIFICATION  
Heavy-duty ——— Light-duty ———  
Medium-duty ——— Unimproved dirt ———  
U.S. Route ——— State Route ———

BRYAN EAST, TEX.

N3037.5-W9615.7/5

1962

PHOTOREVISED 1971

AMS 6745 111 NE-SERIES V882

JAN 2 1973

1375