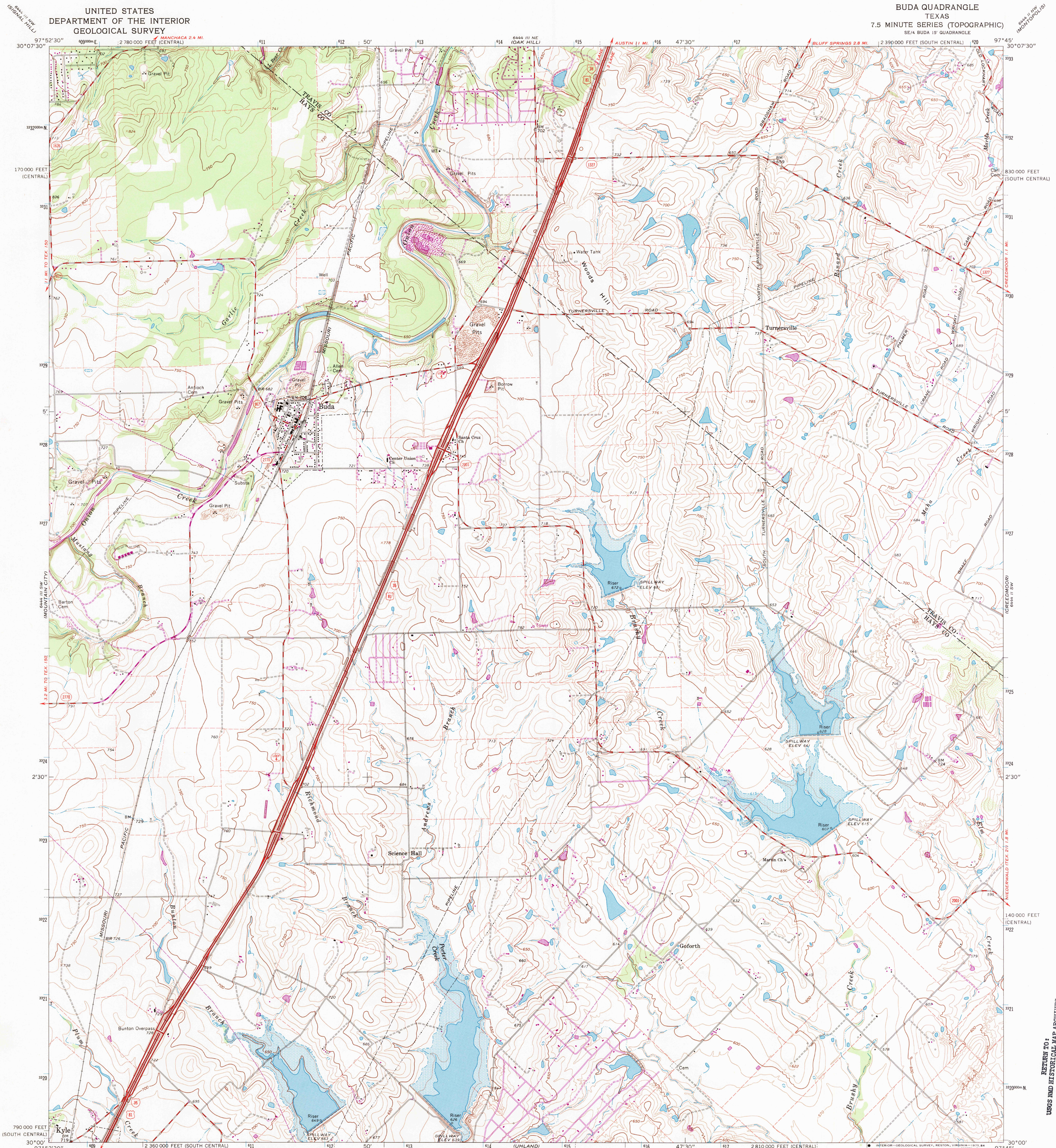
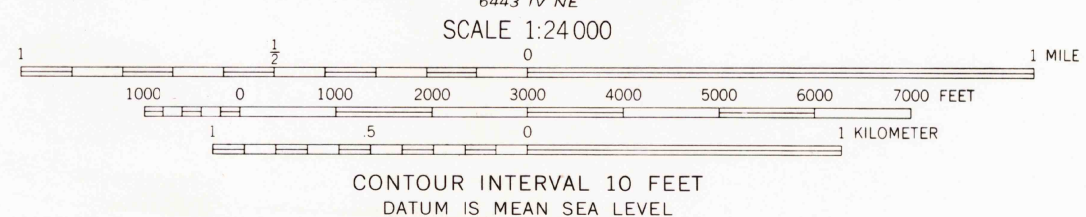
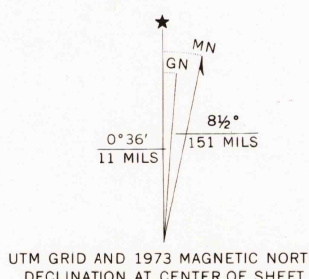


UNITED STATES  
DEPARTMENT OF THE INTERIOR  
GEOLOGICAL SURVEY

BUDA QUADRANGLE  
TEXAS  
7.5 MINUTE SERIES (TOPOGRAPHIC)  
SE/4 BUDA 15' QUADRANGLE



Mapped, edited, and published by the Geological Survey  
Control by USGS and USC&GS  
Topography by photogrammetric methods from aerial  
photographs taken 1967. Field checked 1968  
Polyconic projection. 1927 North American datum  
10,000-foot grids based on Texas coordinate system,  
south central and central zones  
1000 meter Universal Transverse Mercator grid ticks,  
zone 14, shown in blue  
Fine red dashed lines indicate selected fence lines  
Areas covered by dashed light-blue pattern are subject to  
controlled inundation  
Revisions shown in purple compiled from aerial photographs  
taken 1973. This information not field checked



ROAD CLASSIFICATION	
Primary highway, hard surface	Light-duty road, hard or improved surface
Secondary highway, hard surface	Unimproved road
Interstate Route	U. S. Route
	State Route

BUDA, TEX.  
SE/4 BUDA 15' QUADRANGLE  
N3000—W9745/7.5  
1968  
PHOTOREVISED 1973  
AMS 6444 III SE—SERIES W882

THIS MAP COMPLIES WITH NATIONAL MAP ACCURACY STANDARDS  
FOR SALE BY U. S. GEOLOGICAL SURVEY, DENVER, COLORADO 80225, OR RESTON, VIRGINIA 22092  
A FOLDER DESCRIBING TOPOGRAPHIC MAPS AND SYMBOLS IS AVAILABLE ON REQUEST

REVIEW TO:  
USGS AND HISTORICAL MAP ARCHIVES