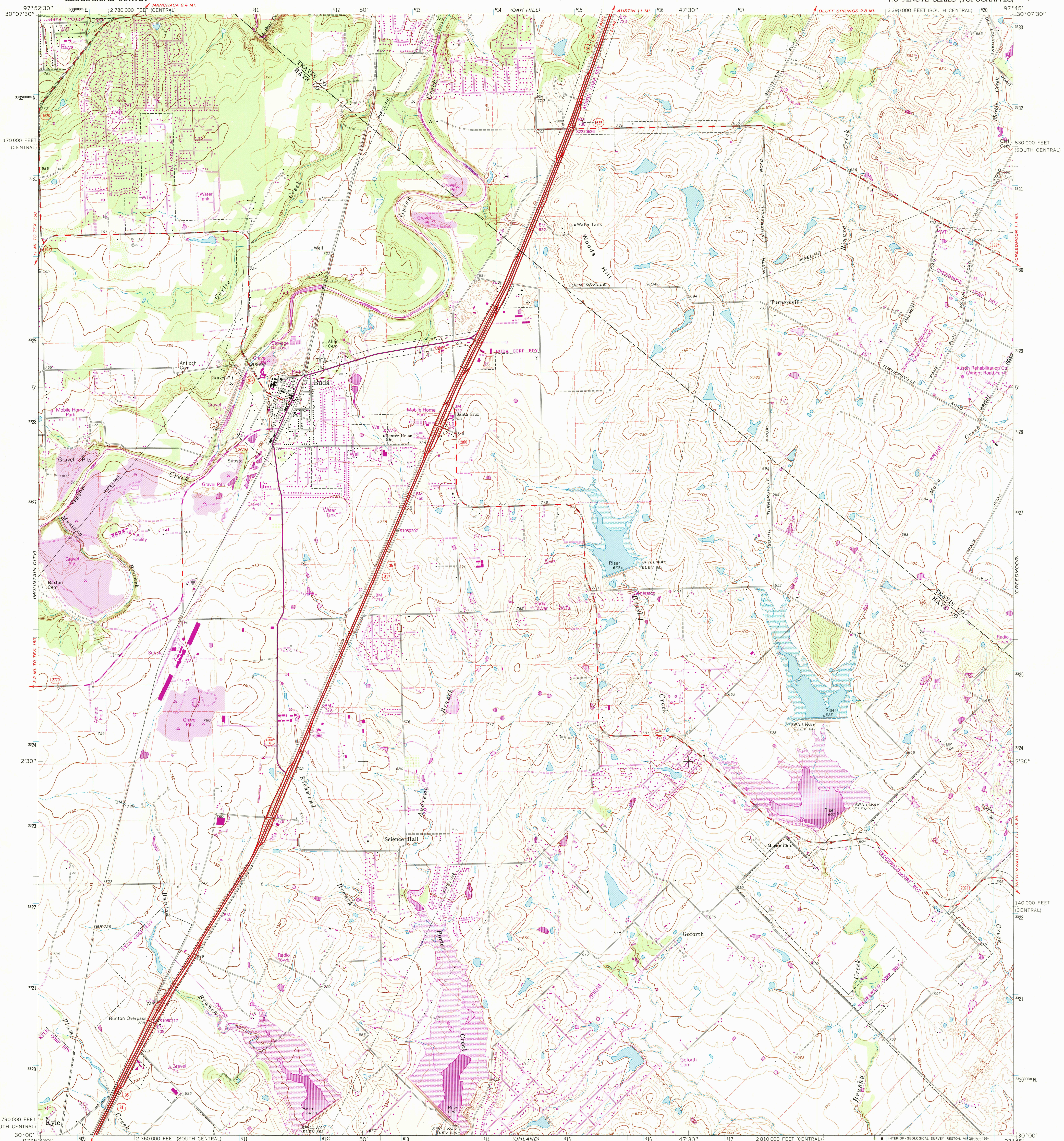
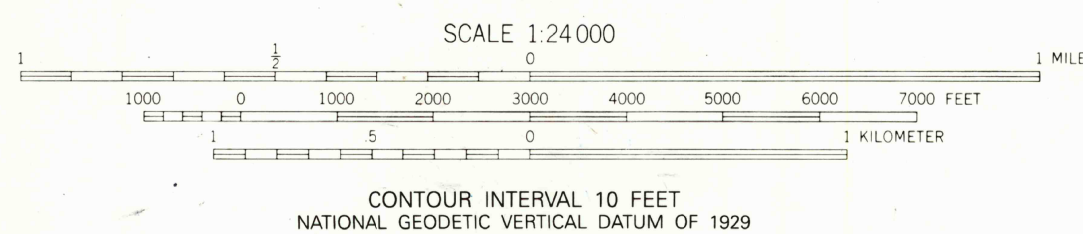
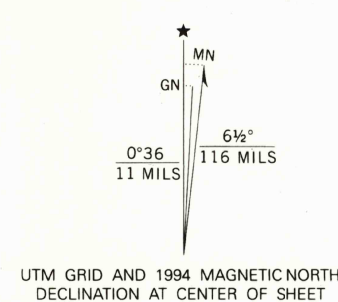


UNITED STATES
DEPARTMENT OF THE INTERIOR
GEOLOGICAL SURVEY

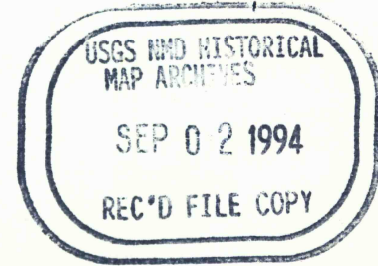
BUDA QUADRANGLE
TEXAS
7.5 MINUTE SERIES (TOPOGRAPHIC)



Produced by the United States Geological Survey
Control by USGS, NOS/NOAA and Texas Department of Highways
and Public Transportation
Compiled from aerial photographs taken 1967. Revisions shown
in purple compiled from aerial photographs taken 1986 and
other sources and have been field checked. Map edited 1994.
Conflicts may exist between some updated features and
previously mapped contours.
North American Datum of 1927 (NAD 27). Projection:
Texas Coordinate System, south central zone (Lambert Conformal Conic)
10 000-foot ticks. Texas Coordinate System south central and central
zones. Blue 1000-meter Universal Transverse Mercator ticks, zone 14
North American Datum of 1983 (NAD 83) is shown by dashed
corner ticks. The values of the shift between NAD 27 and NAD 83
for 7.5-minute intersections are obtainable from National Geodetic
Survey NADCON software.
Fine red dashed lines indicate collected fence lines.



| ROAD CLASSIFICATION | |
|------------------------------------|--|
| Primary highway, hard surface | Light-duty road, hard or improved surface |
| Secondary highway, hard surface | Unimproved road |
| Interstate Route | U. S. Route |
| | State Route |



BUDA, TEX.
30097-A7-TF-024
1968
REVISED 1994
DMA 6444 III SE-SERIES V882

THIS MAP COMPLIES WITH NATIONAL MAP ACCURACY STANDARDS
FOR SALE BY U. S. GEOLOGICAL SURVEY, DENVER, COLORADO 80225, OR RESTON, VIRGINIA 22092
A FOLDER DESCRIBING TOPOGRAPHIC MAPS AND SYMBOLS IS AVAILABLE ON REQUEST

3097-221