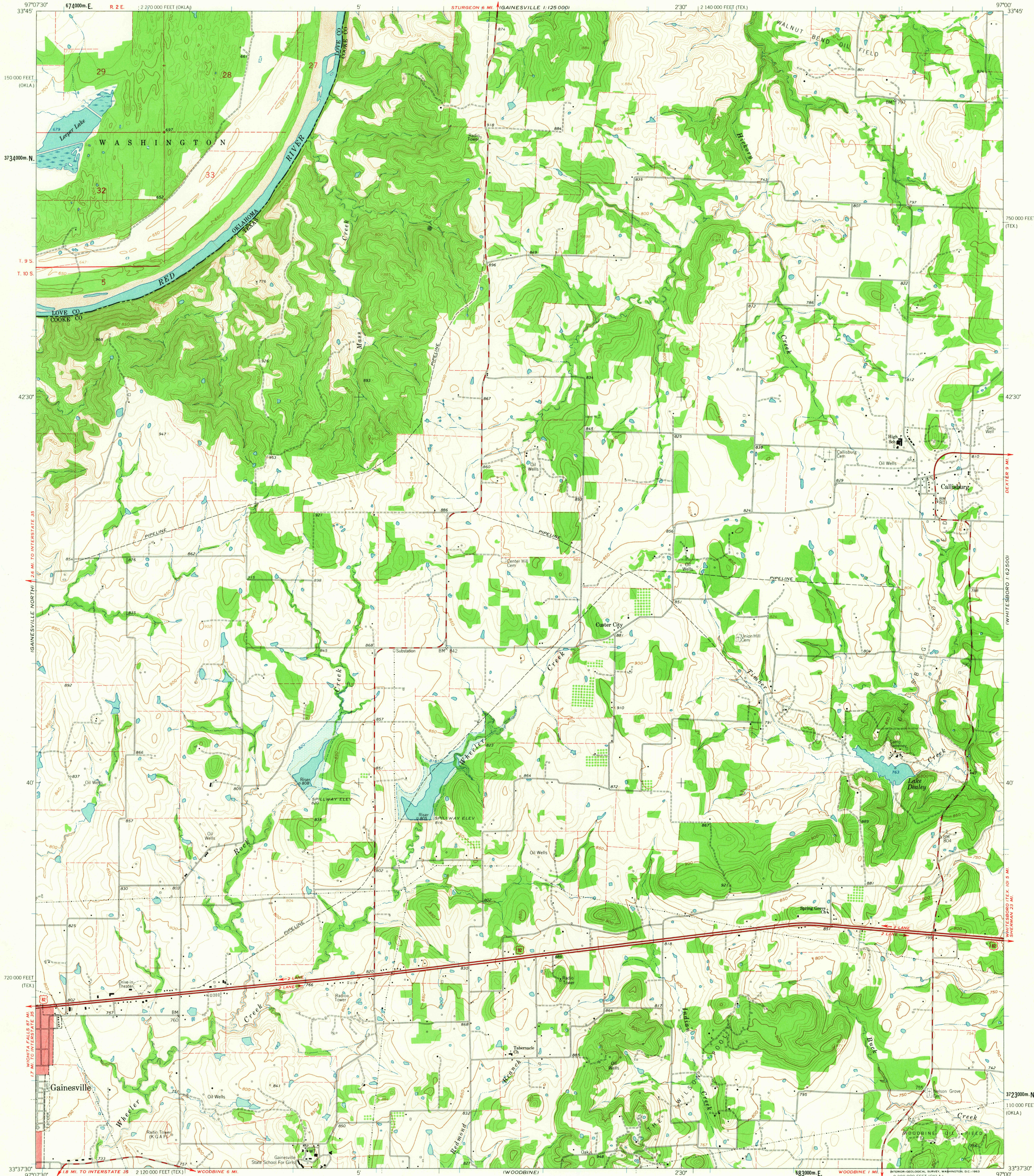


GAINESVILLE  
1:125,000

UNITED STATES  
DEPARTMENT OF THE INTERIOR  
GEOLOGICAL SURVEY

CALLISBURG QUADRANGLE  
TEXAS-OKLAHOMA  
7.5 MINUTE SERIES (TOPOGRAPHIC)

GORDONVILLE  
1:62,500



Maped, edited, and published by the Geological Survey

Control by USGS and USC&GS

Topography by photogrammetric methods from aerial photographs taken 1957. Field checked 1960

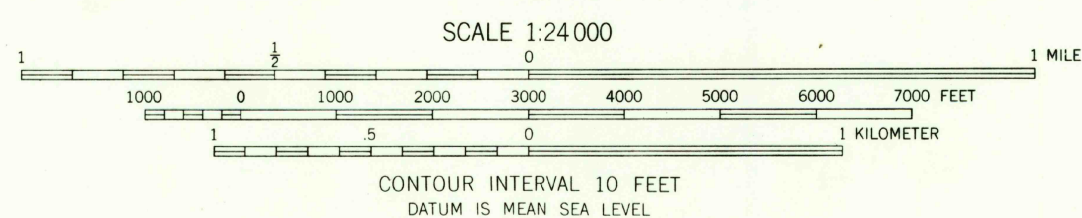
Polyconic projection. 1927 North American datum  
10,000-foot grids based on Texas coordinate system, north central zone  
and Oklahoma coordinate system, south zone  
1000-meter Universal Transverse Mercator grid ticks,  
zone 14, shown in blue

Red tint indicates areas in which only landmark buildings are shown.

Fine red dashed lines indicate selected fence lines

Areas covered by dashed light-blue pattern are subject  
to controlled inundation

TRUE NORTH  
MAGNETIC NORTH  
APPROXIMATE MEAN  
DECLINATION, 1960



ROAD CLASSIFICATION  
Heavy-duty ——— Light-duty ———  
Medium-duty ——— Unimproved dirt ———  
U.S. Route

THIS MAP COMPLIES WITH NATIONAL MAP ACCURACY STANDARDS  
FOR SALE BY U.S. GEOLOGICAL SURVEY, DENVER 25, COLORADO OR WASHINGTON 25, D.C.  
A FOLDER DESCRIBING TOPOGRAPHIC MAPS AND SYMBOLS IS AVAILABLE ON REQUEST

USGS  
FILE COPY  
TOPOGRAPHIC DIVISION

CALLISBURG, TEX.-OKLA.  
N3337.5-W9700/7.5

1960

OCT - 9 1963