

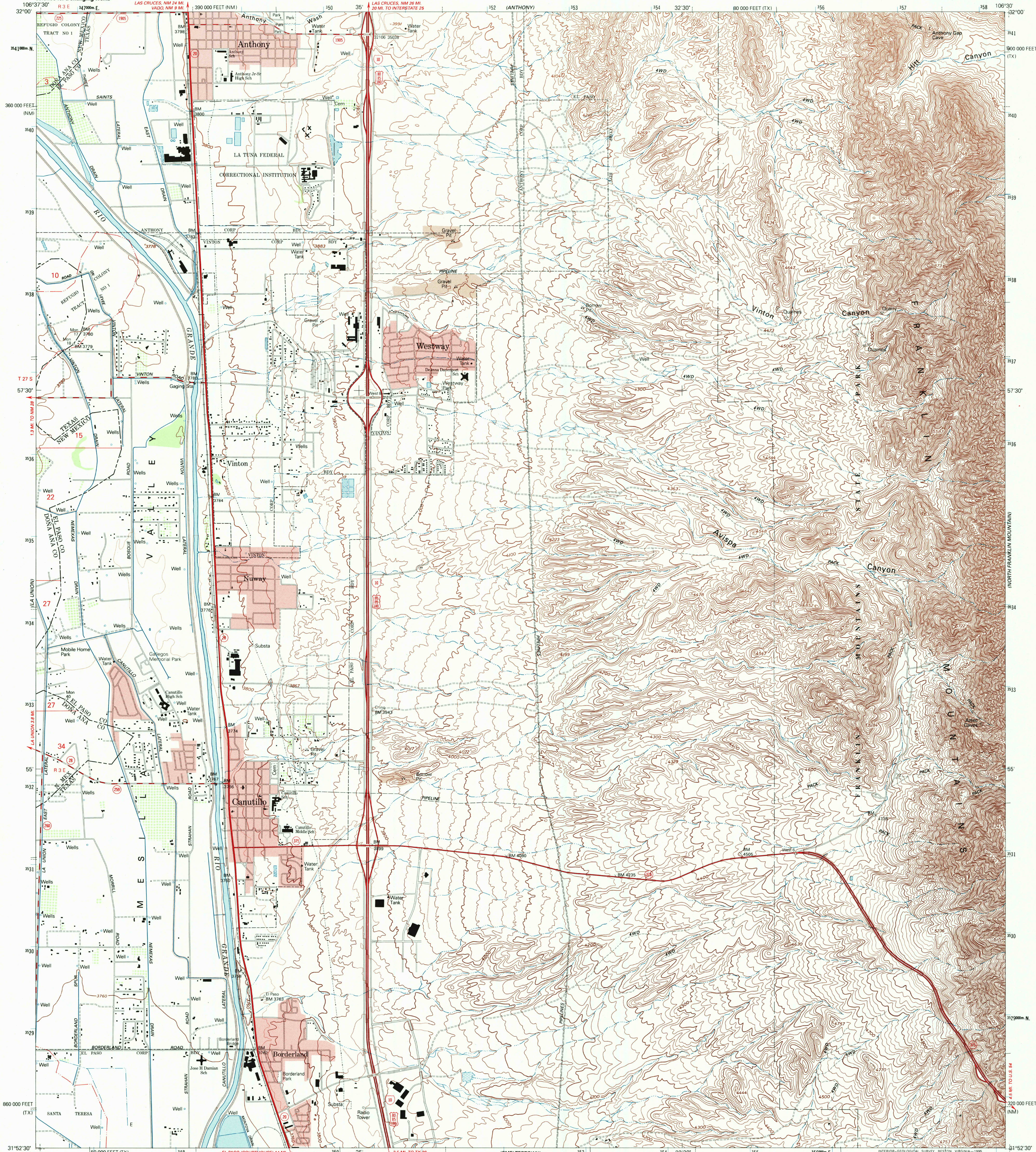
(LA MESA)



U.S. DEPARTMENT OF THE INTERIOR
U.S. GEOLOGICAL SURVEY

CANUTILLO QUADRANGLE
TEXAS-NEW MEXICO
7.5 MINUTE SERIES (TOPOGRAPHIC)

(NEWMAN SW)



(STRAUSS)

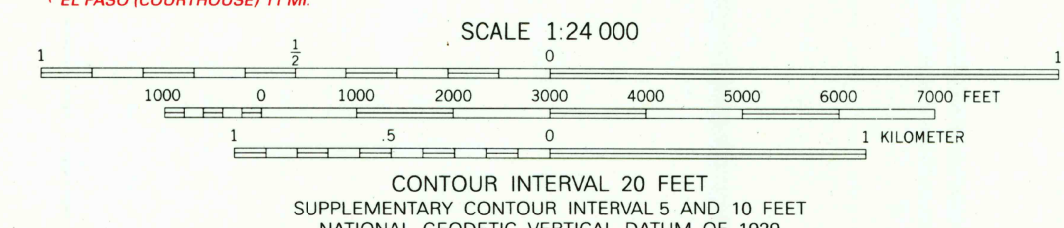
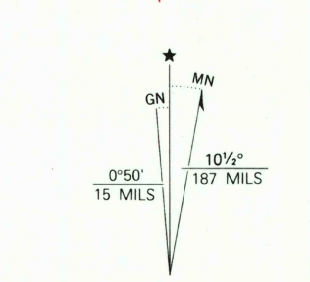
Produced by the United States Geological Survey
Control by USGS and NOS/NOAA

Compiled from aerial photographs taken 1954. Revised from aerial
photographs taken 1991 and other sources. Field checked 1992
Map edited 1995

North American Datum of 1927 (NAD 27). Projection:
Texas Coordinate System, central zone (Lambert Conformal Conic)
10000-foot ticks: Texas Coordinate System, central zone and
New Mexico Coordinate System, central zone
Blue 1000-meter Universal Transverse Mercator ticks, zone 13

North American Datum of 1983 (NAD 83) is shown by dashed
corner ticks. The values of the shift between NAD 27 and NAD 83
for 7.5-minute intersections are obtainable from National Geodetic
Survey NADCON software

There may be private inholdings within the boundaries of the
National or State reservations shown on this map
Red tint indicates areas in which only landmark buildings are shown



THIS MAP COMPLIES WITH NATIONAL MAP ACCURACY STANDARDS
FOR SALE BY U.S. GEOLOGICAL SURVEY, P.O. BOX 25286, DENVER, COLORADO 80225
A FOLDER DESCRIBING TOPOGRAPHIC MAPS AND SYMBOLS IS AVAILABLE ON REQUEST



QUADRANGLE LOCATION

RECEIVED
OCT 31 2001

HISTORICAL MAP ARCHIVES

CANUTILLO, TX-NM
31106-H5-TF-024

1995
DMA 4647 1 NE-SERIES V882

