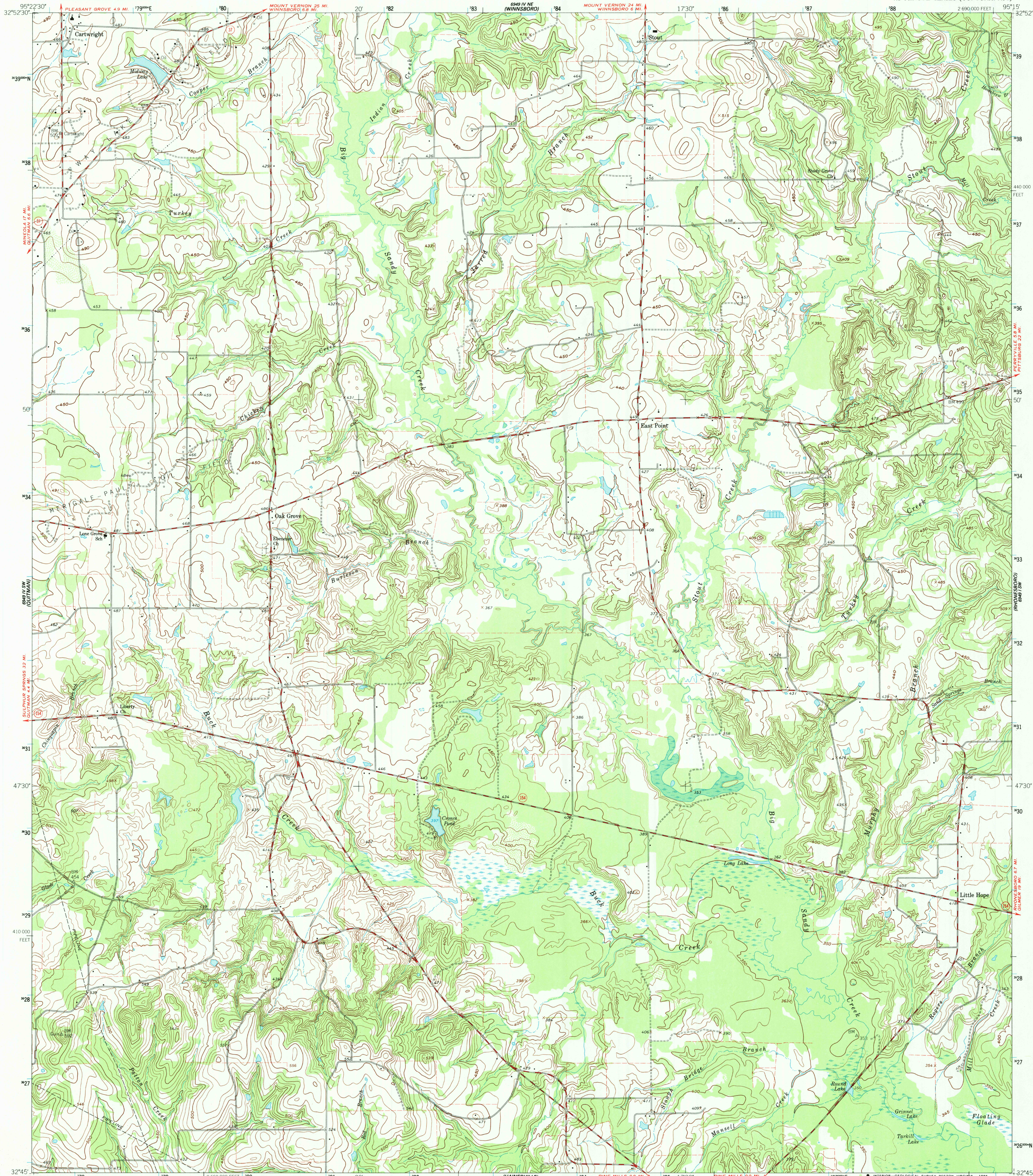


UNITED STATES
DEPARTMENT OF THE INTERIOR
GEOLOGICAL SURVEY

CARTWRIGHT QUADRANGLE
TEXAS-WOOD CO.
7.5 MINUTE SERIES (TOPOGRAPHIC)



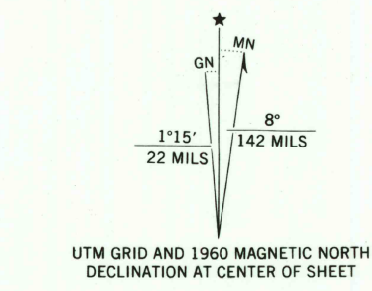
Mapped, edited, and published by the Geological Survey
Control by USGS and USC&GS

Topography by photogrammetric methods from aerial
photographs taken 1958. Field checked 1960

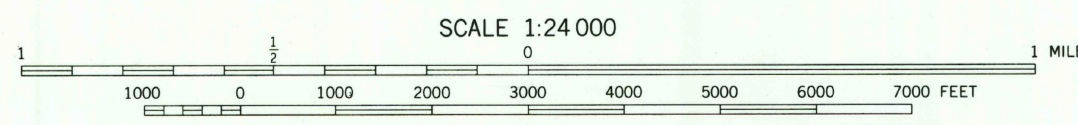
Polyconic projection. 1927 North American Datum
10,000-foot grid based on Texas coordinate system,
north central zone
1000 meter Universal Transverse Mercator grid ticks,
zone 15, shown in blue

Fine red dashed lines indicate selected fence and field lines
where generally visible on aerial photographs
This information is unchecked

To place on the predicted North American Datum 1983
move the projection lines 11 meters south and
22 meters east as shown by dashed corner ticks



Map photoinspected 1976
No major culture or drainage changes observed



THIS MAP COMPLIES WITH NATIONAL MAP ACCURACY STANDARDS
FOR SALE BY U. S. GEOLOGICAL SURVEY, DENVER, COLORADO 80225, OR RESTON, VIRGINIA 22092
A FOLDER DESCRIBING TOPOGRAPHIC MAPS AND SYMBOLS IS AVAILABLE ON REQUEST



3295-431

ROAD CLASSIFICATION
Medium-duty ——— Light-duty ———
Unimproved dirt ———
State Route ———

CARTWRIGHT, TEX.
32095-G3-TF-024

1960
PHOTOINSPECTED 1976
DMA 6949 IV SE-SERIES V882

RETURN TO:
USGS AND HISTORICAL MAP ARCHIVES