

UNITED STATES
DEPARTMENT OF THE INTERIOR
GEOLOGICAL SURVEY

CEDAR HILL QUADRANGLE
TEXAS
7.5 MINUTE SERIES (TOPOGRAPHIC)
SW 1/4 LANCASTER 15' QUADRANGLE
2 190 000 FEET

DALLAS-FORT WORTH TURNPIKE 9.4 MI.
GRAND PRAIRIE (PO) 9.8 MI.

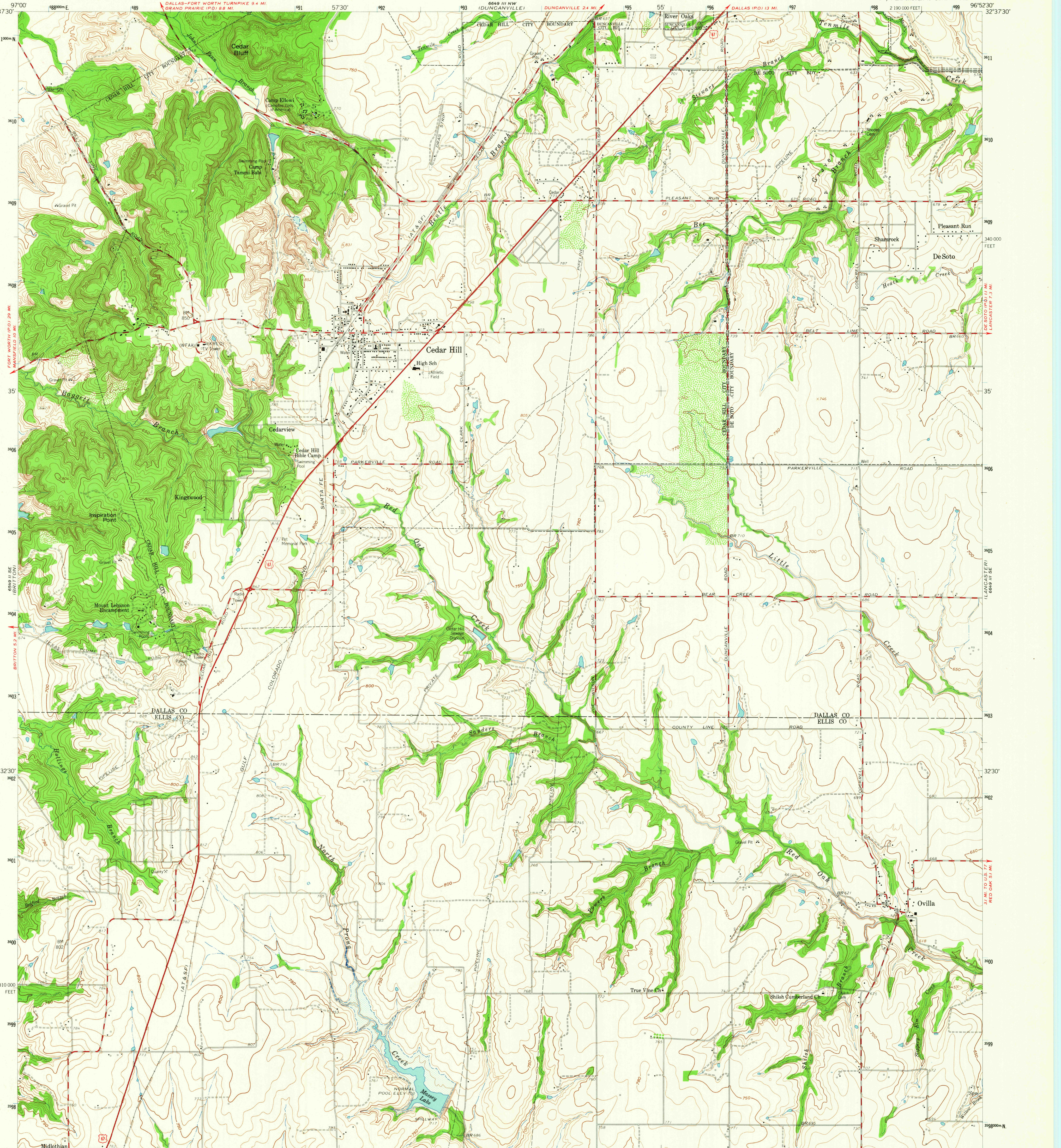
6648 III NW
(DUNCANVILLE)

DUNCANVILLE 2.4 MI.

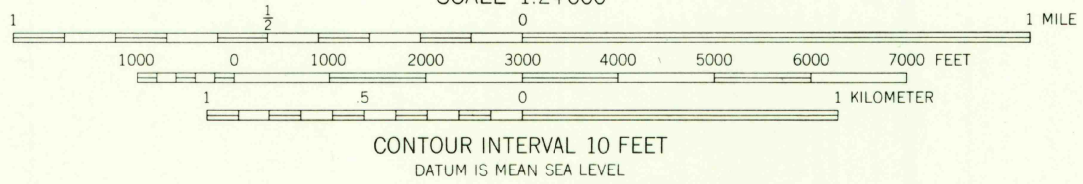
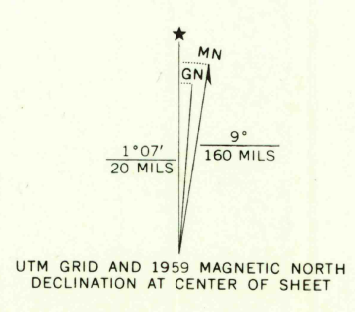
DALLAS (PO) 13 MI.

2 190 000 FEET

6649 III NE
(OK CLIFF)



Mapped, edited, and published by the Geological Survey
Control by USGS and USC&GS
Topography from aerial photographs by photogrammetric methods
Aerial photographs taken 1956. Field check 1959
Polyconic projection. 1927 North American datum
10,000-foot grid based on Texas coordinate system,
north central zone
1000-meter Universal Transverse Mercator grid ticks,
zone 14, shown in blue
Area covered by dashed light-blue pattern
is subject to controlled inundation



ROAD CLASSIFICATION
Heavy-duty ——— Light-duty ———
Medium-duty ——— Unimproved dirt ———
U.S. Route

U.S.G.S. CEDAR HILL, TEX.
SW 1/4 LANCASTER 15' QUADRANGLE
N3230-W9652.5/7.5
1959
AMS 6648 III SW-SERIES V882

MAR 10 1965
3901

THIS MAP COMPLIES WITH NATIONAL MAP ACCURACY STANDARDS
FOR SALE BY U.S. GEOLOGICAL SURVEY, DENVER 25, COLORADO OR WASHINGTON 25, D.C.
A FOLDER DESCRIBING TOPOGRAPHIC MAPS AND SYMBOLS IS AVAILABLE ON REQUEST