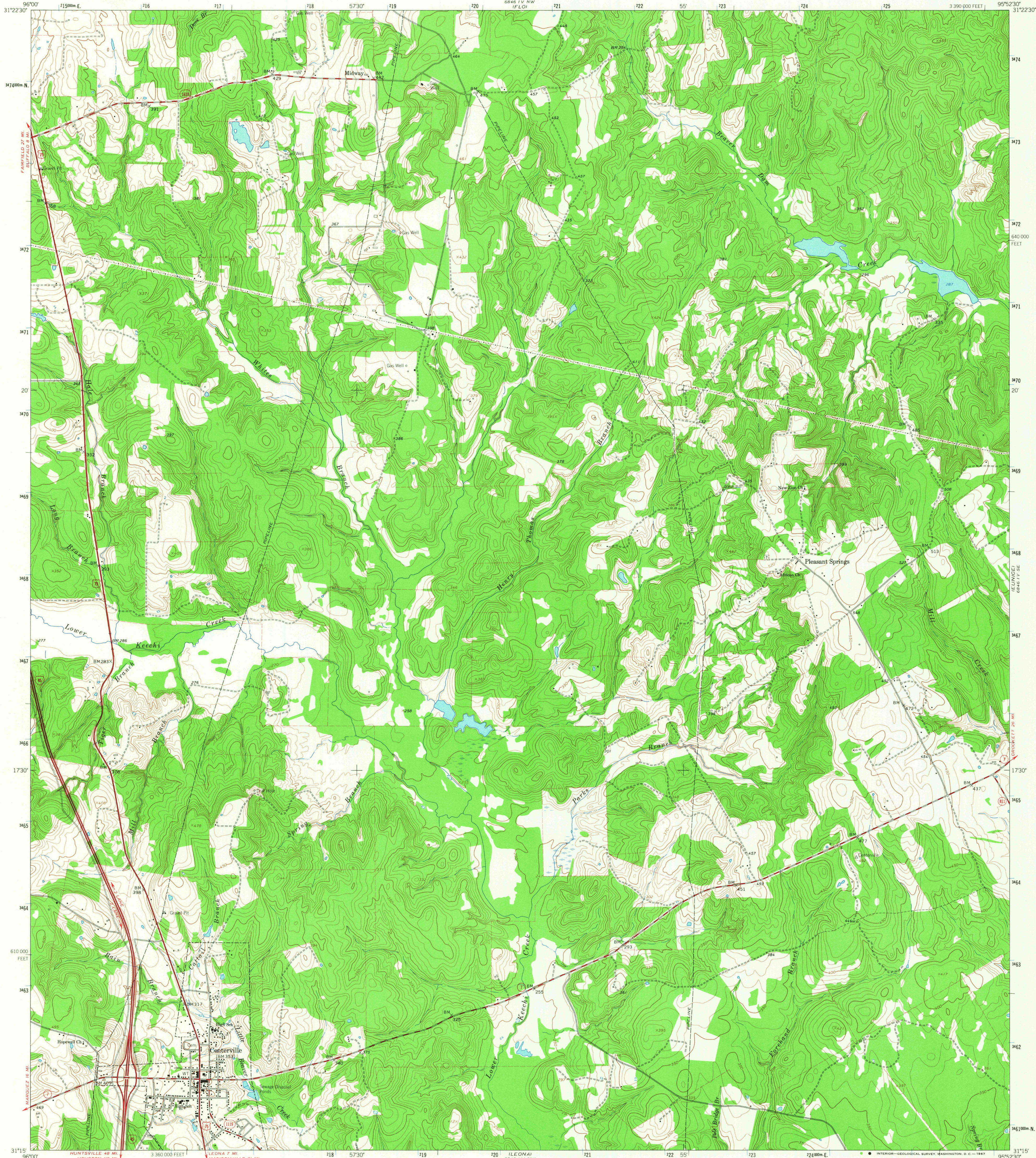


UNITED STATES  
DEPARTMENT OF THE INTERIOR  
GEOLOGICAL SURVEY

CENTERVILLE QUADRANGLE  
TEXAS-LEON CO.  
7.5 MINUTE SERIES (TOPOGRAPHIC)

6846 V SW  
LAKE LEON



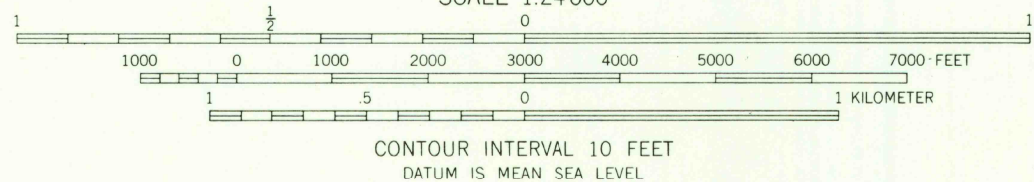
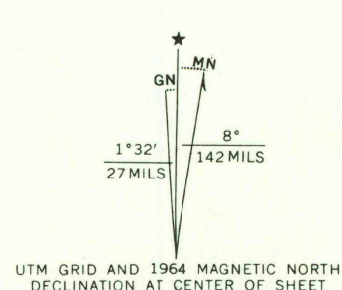
Mapped, edited, and published by the Geological Survey

Control by USGS and USC&GS

Topography by photogrammetric methods from aerial  
photographs taken 1963. Field checked 1964

Polyconic projection. 1927 North American datum  
10,000-foot grid based on Texas coordinate system, central zone  
1000-meter Universal Transverse Mercator grid ticks,  
zone 15, shown in blue

Fine red dashed lines indicate selected fence lines



ROAD CLASSIFICATION		
Heavy-duty	Light-duty	
Medium-duty	Unimproved dirt	
Interstate Route	U.S. Route	State Route

U.S.G.S.  
FILE COPY  
TOPOGRAPHIC DIVISION

CENTERVILLE, TEX.  
N3115-W9552.5/7.5  
1964

AMS 6846 IV SW-SERIES V882

3250  
APR 12 1967

THIS MAP COMPLIES WITH NATIONAL MAP ACCURACY STANDARDS  
FOR SALE BY U.S. GEOLOGICAL SURVEY, DENVER, COLORADO 80225, OR WASHINGTON, D. C. 20242  
A FOLDER DESCRIBING TOPOGRAPHIC MAPS AND SYMBOLS IS AVAILABLE ON REQUEST