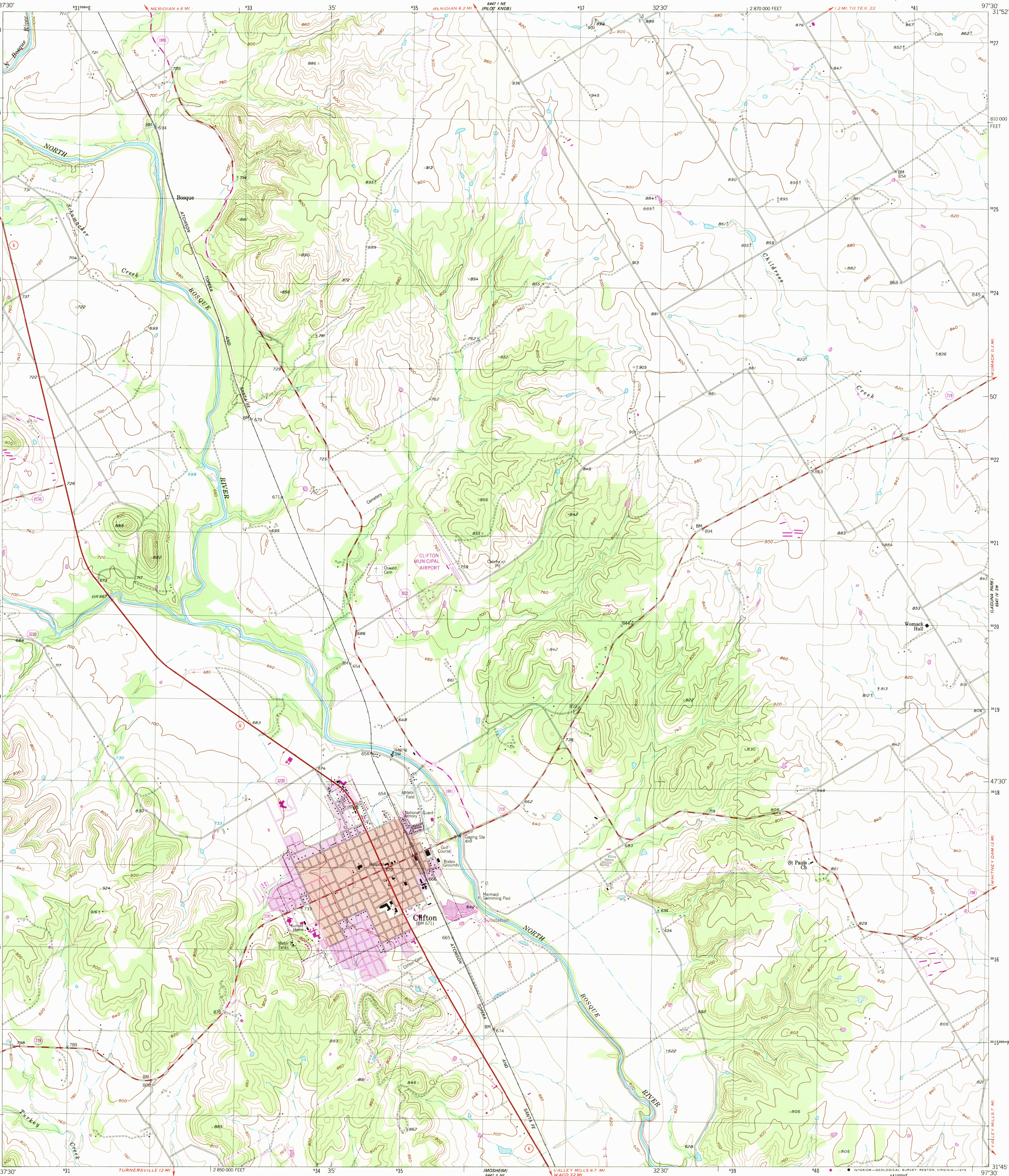


UNITED STATES  
DEPARTMENT OF THE INTERIOR  
GEOLOGICAL SURVEY

CLIFTON QUADRANGLE  
TEXAS-BOSQUE CO.  
7.5 MINUTE SERIES (TOPOGRAPHIC)  
SE/4 CLIFTON 15' QUADRANGLE



Mapped, edited, and published by the Geological Survey  
Control by USGS and USC&GS  
Topography from aerial photographs by ER-55 plotter  
Aerial photographs taken 1955. Field check 1955  
Polyconic projection, 1927 North American datum  
10,000-foot grid based on Texas coordinate system,  
central zone  
1000-meter Universal Transverse Mercator grid, zone 14  
Red tint indicates area in which only  
landmark buildings are shown  
Revisions shown in purple and woodland compiled from  
aerial photographs taken 1976 and other source data  
This information not field checked. Map edited 1979  
Purple tint indicates extension of urban areas

UTM GRID AND 1979 MAGNETIC NORTH  
DECLINATION AT CENTER OF SHEET

SCALE 1:24 000  
1 000 2 000 3 000 4 000 5 000 6 000 7 000 FEET  
1 2 3 4 5 6 7 8 9 10 KILOMETER  
CONTOUR INTERVAL 20 FEET  
NATIONAL GEODETIC VERTICAL DATUM OF 1929

THIS MAP COMPLIES WITH NATIONAL MAP ACCURACY STANDARDS  
FOR SALE BY U. S. GEOLOGICAL SURVEY, DENVER, COLORADO 80225, OR RESTON, VIRGINIA 22092  
A FOLDER DESCRIBING TOPOGRAPHIC MAPS AND SYMBOLS IS AVAILABLE ON REQUEST



QUADRANGLE LOCATION

ROAD CLASSIFICATION 1956  
Heavy duty ——— Light duty ———  
Medium duty ——— Unimproved dirt ———  
State Route ———  
CLIFTON, TEX.  
SE/4 CLIFTON 15' QUADRANGLE  
N3145—W9730/7.5  
1955  
PHOTOREVISED 1979  
AMS 6447 1 SE—SERIES V882