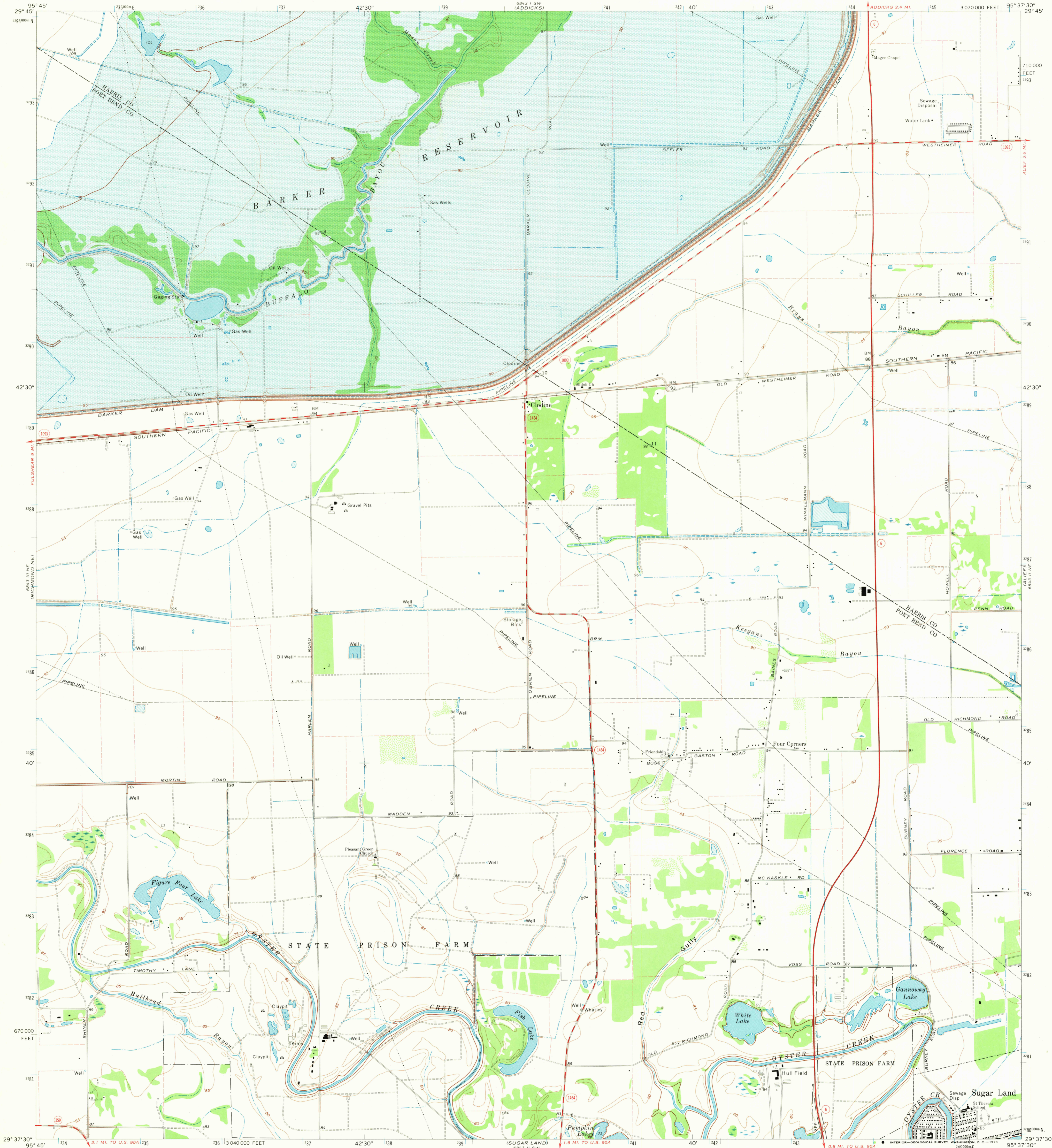
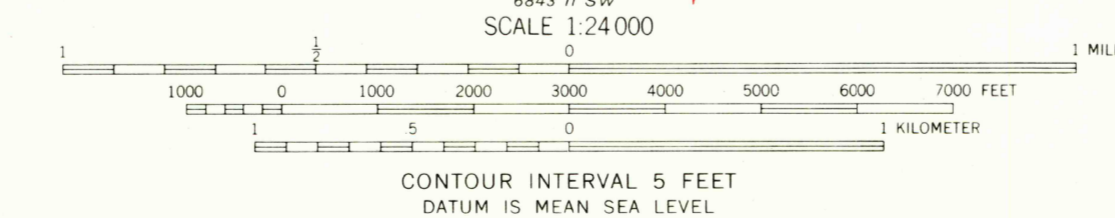
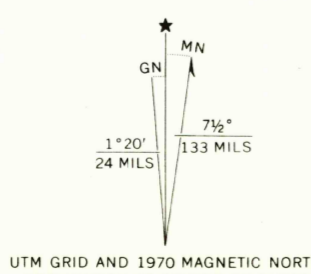


UNITED STATES
DEPARTMENT OF THE INTERIOR
GEOLOGICAL SURVEY

CLODINE QUADRANGLE
TEXAS
7.5 MINUTE SERIES (TOPOGRAPHIC)
NW 1/4 SUGAR LAND 15' QUADRANGLE



Mapped, edited, and published by the Geological Survey
Control by USGS and USC&GS
Planimetry by photogrammetric methods from aerial photographs
taken 1968. Topography enlarged from 1:62 500-scale map of
Sugar Land quadrangle dated 1955. Topography by planetable
surveys. Field checked 1970. Supersedes map dated 1915.
Polyconic projection. 1927 North American datum
10,000-foot grid based on Texas coordinate system,
south central zone
1000-meter Universal Transverse Mercator grid ticks,
zone 15, shown in blue
Fine red dashed lines indicate selected fence lines
Areas covered by dashed light-blue pattern are subject to
controlled inundation to 107 feet



ROAD CLASSIFICATION	
Primary highway, hard surface	Light-duty road, hard or improved surface
Secondary highway, hard surface	Unimproved road
Interstate Route	U. S. Route
	State Route

CLODINE, TEX.
NW 1/4 SUGAR LAND 15' QUADRANGLE
N2937.5—W9537.5/7.5
1970
AMS 6943 II NW—SERIES V882

DEC 18 1972
2225