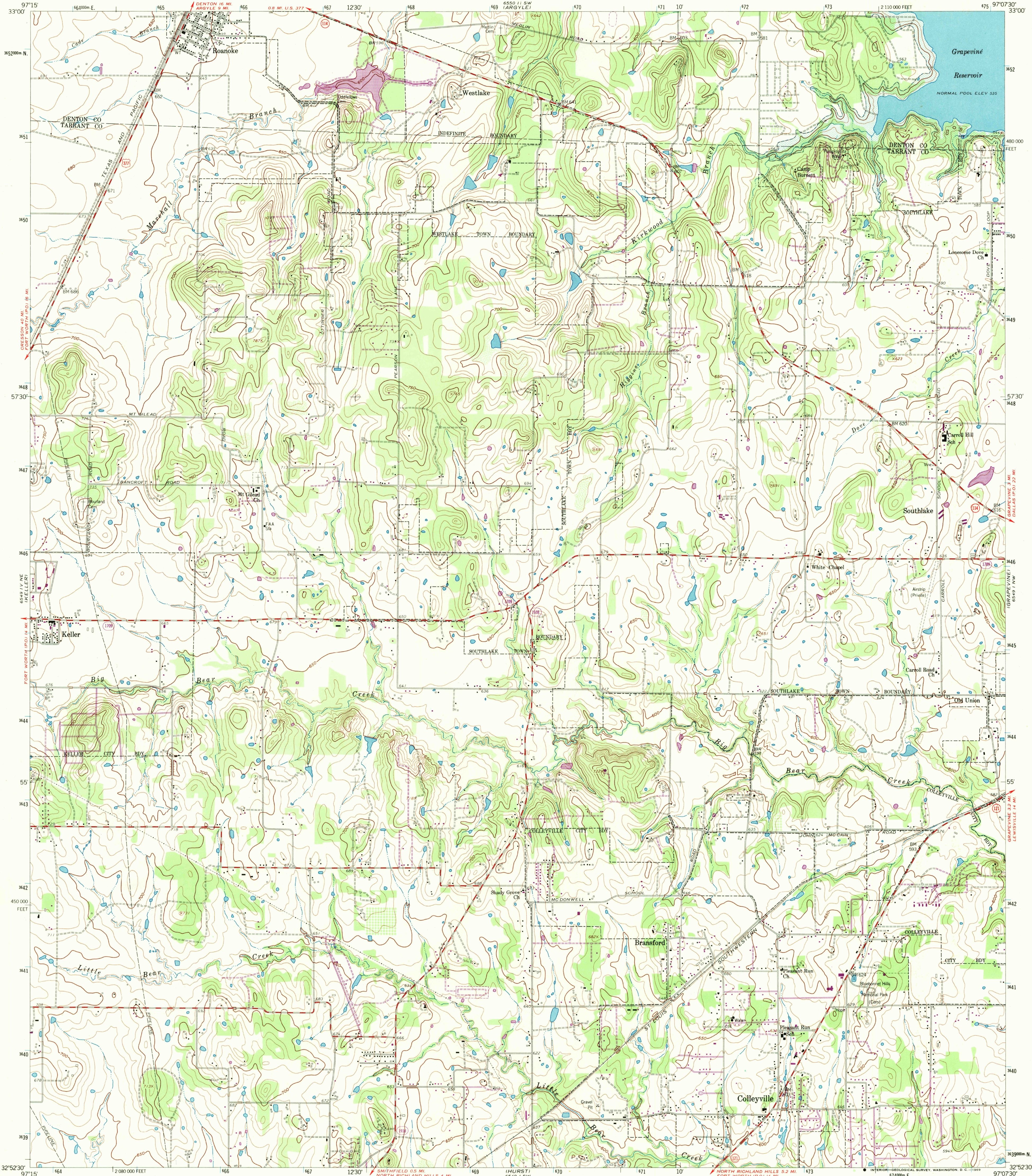
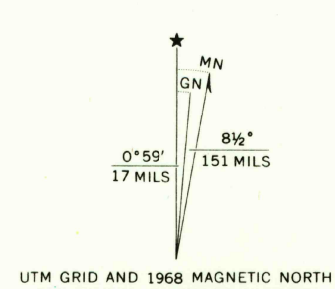


UNITED STATES  
DEPARTMENT OF THE INTERIOR  
GEOLOGICAL SURVEY

COLLEYVILLE QUADRANGLE  
TEXAS  
7.5 MINUTE SERIES (TOPOGRAPHIC)  
NW/4 GRAPEVINE 15' QUADRANGLE



Maped, edited, and published by the Geological Survey  
Control by USGS and USC&GS  
Topography from aerial photographs by photogrammetric methods  
Aerial photographs taken 1956. Field check 1959  
Polyconic projection. 1927 North American datum  
10,000-foot grid based on Texas coordinate system,  
north central zone  
1000-meter Universal Transverse Mercator grid ticks,  
zone 14, shown in blue  
Areas covered by dashed light-blue pattern are subject  
to controlled inundation. Maximum pool elevation 560 feet  
Revisions shown in purple compiled by the Geological Survey from  
aerial photographs taken 1968. This information not field checked



SCALE 1:24,000  
CONTOUR INTERVAL 10 FEET  
DATUM IS MEAN SEA LEVEL  
THIS MAP COMPLIES WITH NATIONAL MAP ACCURACY STANDARDS  
FOR SALE BY U. S. GEOLOGICAL SURVEY, DENVER, COLORADO 80225, OR WASHINGTON, D. C. 20242  
A FOLDER DESCRIBING TOPOGRAPHIC MAPS AND SYMBOLS IS AVAILABLE ON REQUEST



ROAD CLASSIFICATION  
Medium-duty ——— Light-duty ———  
Unimproved dirt ———  
U.S. Route ——— State Route ———  
U.S.G.S.  
FILE COPY  
TOPOGRAPHIC DIVISION  
COLLEYVILLE, TEX.  
NW/4 GRAPEVINE 15' QUADRANGLE  
N3252.5-W9707.5/7.5  
1959  
PHOTOREVISED 1968  
AMS 6549 1 NW-SERIES V882

3 220  
JUL 25 1969