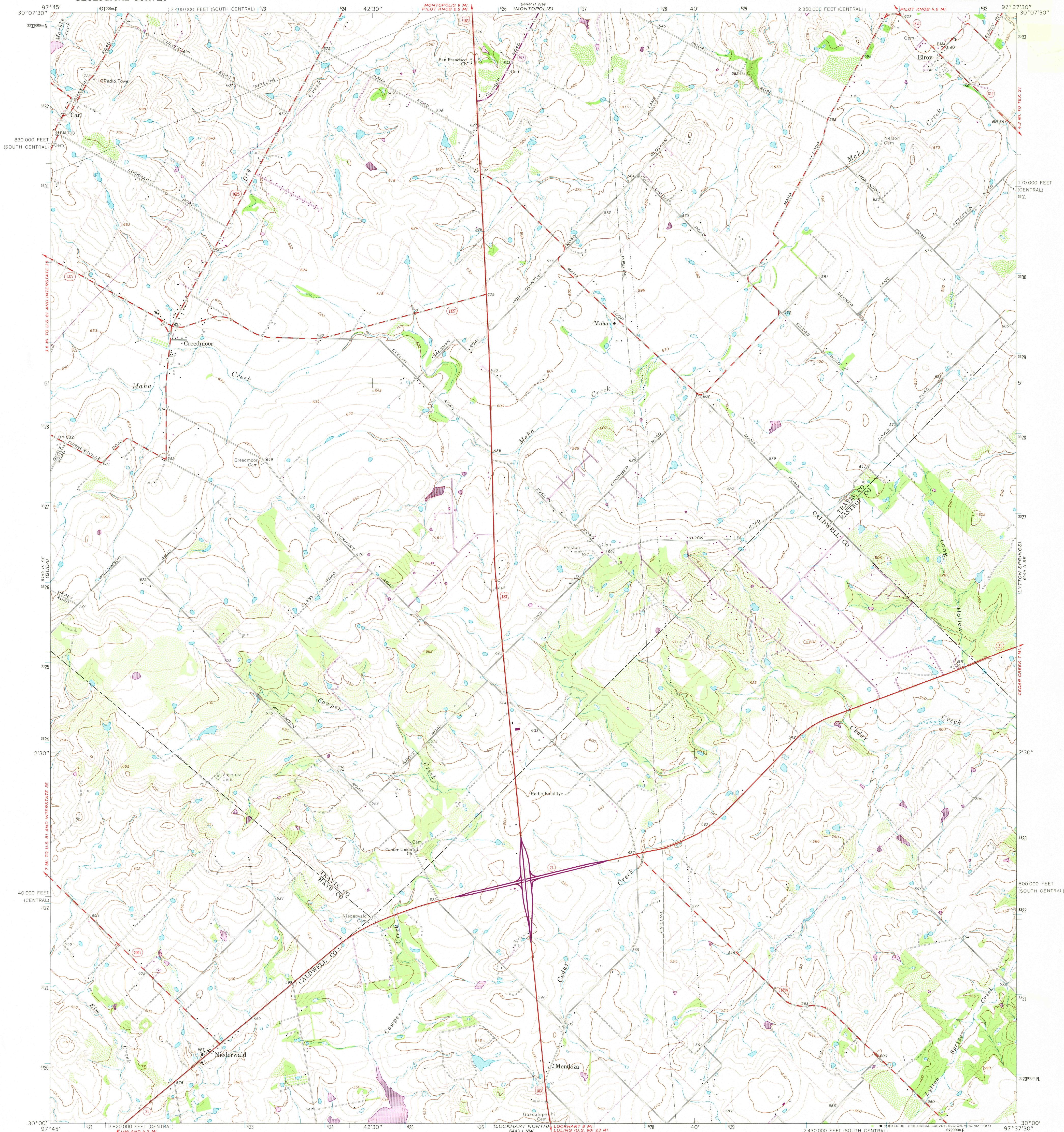


UNITED STATES  
DEPARTMENT OF THE INTERIOR  
GEOLOGICAL SURVEY

CREEDMOOR QUADRANGLE  
TEXAS  
7.5 MINUTE SERIES (TOPOGRAPHIC)  
SW 1/4 MONTOPOLIS 15' QUADRANGLE



Mapped, edited, and published by the Geological Survey

Control by USGS and USC&GS

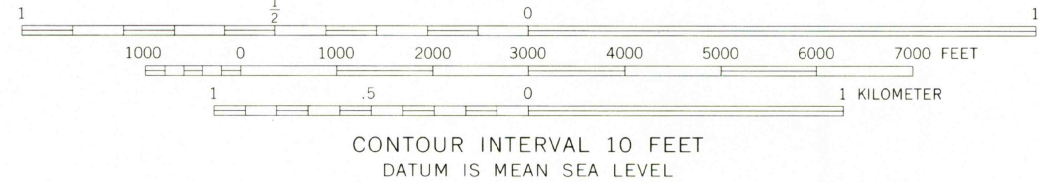
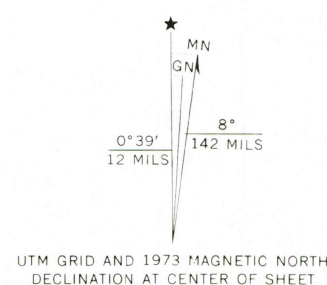
Topography by photogrammetric methods from aerial photographs taken 1967. Field checked 1968

Polyconic projection. 1927 North American datum. 10,000-foot grids based on Texas coordinate system, central and south central zones

1000-meter Universal Transverse Mercator grid ticks, zone 14, shown in blue

Fine red dashed lines indicate selected fence lines

Revisions shown in purple compiled from aerial photographs taken 1973. This information not field checked



THIS MAP COMPLIES WITH NATIONAL MAP ACCURACY STANDARDS  
FOR SALE BY U.S. GEOLOGICAL SURVEY, DENVER, COLORADO 80225, OR RESTON, VIRGINIA 22092  
A FOLDER DESCRIBING TOPOGRAPHIC MAPS AND SYMBOLS IS AVAILABLE ON REQUEST



QUADRANGLE LOCATION

| ROAD CLASSIFICATION             |   |
|---------------------------------|---|
| Primary highway, hard surface   | Light-duty road, hard or improved surface |
| Secondary highway, hard surface | Unimproved road                           |
| Interstate Route                | U.S. Route                                |
|                                 | State Route                               |

USGS  
Historical File  
Topographic Division

CREEDMOOR, TEX.  
SW 1/4 MONTOPOLIS 15' QUADRANGLE  
N 3000—W 9737.5/7.5  
1968  
PHOTOREVISED 1973  
AMS 6444 II SW—SERIES V882

MAR 18 1975