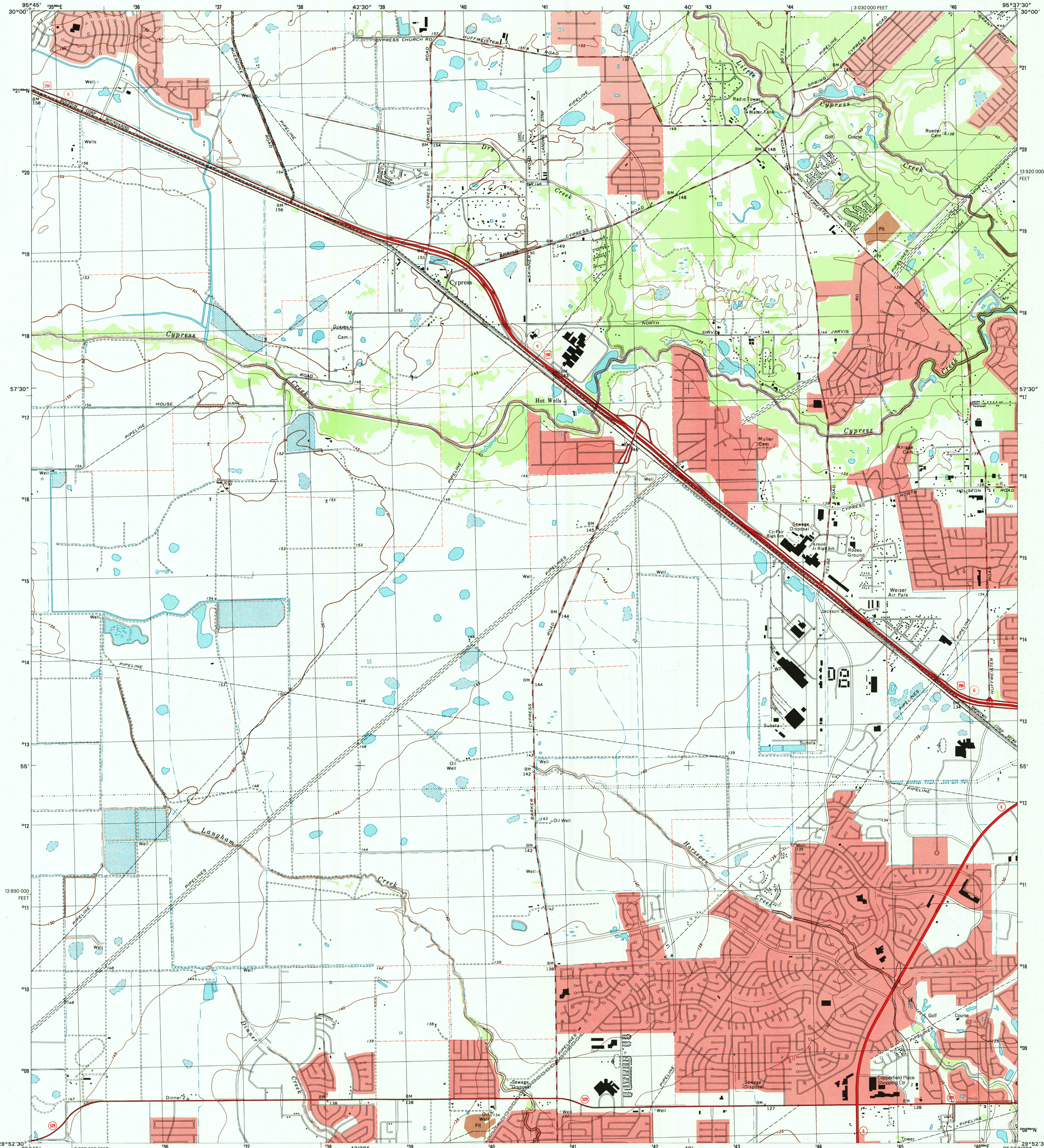




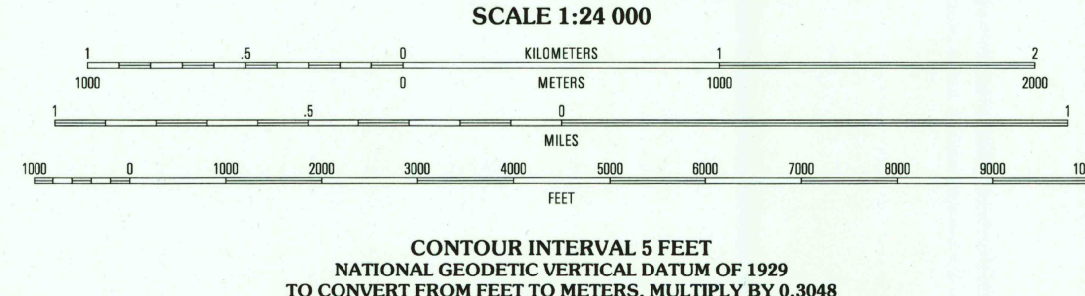
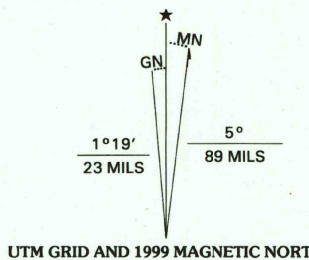
U.S. DEPARTMENT OF THE INTERIOR  
U.S. GEOLOGICAL SURVEY



CYPRESS QUADRANGLE  
TEXAS-HARRIS CO.  
7.5-MINUTE SERIES (TOPOGRAPHIC)



Produced by the United States Geological Survey  
Topography enlarged from 1:62 500-scale Addicks quadrangle dated 1955. Planimetry derived from imagery taken 1995. Survey control current as of 1970.  
North American Datum of 1983 (NAD 83). Projection and 1000-meter grid: Universal Transverse Mercator, zone 15 10 000-foot ticks: Texas Coordinate System of 1983 (south central zone).  
North American Datum of 1927 (NAD 27) is shown by dashed corner ticks. The values of the shift between NAD 83 and NAD 27 for 7.5-minute intersections are obtainable from National Geodetic Survey NADCON software.  
Landmark buildings verified 1970.



QUADRANGLE LOCATION  
2995-343

1	2	3
4	5	6
7	8	9

ADJOINING 7.5' QUADRANGLE NAMES

ROAD CLASSIFICATION

Primary highway  
hard surface .....  
Secondary highway  
hard surface .....  
Interstate Route .....  
U.S. Route .....  
State Route .....  
Light-duty road, hard or  
improved surface .....  
Unimproved road .....

RECEIVED  
JAN 31 2000  
USGS NMD  
HISTORICAL MAP ARCHIVES  
CYPRESS, TX  
1995  
NIMA 6843 1 NW-SERIES V882

THIS MAP COMPLIES WITH NATIONAL MAP ACCURACY STANDARDS  
FOR SALE BY U.S. GEOLOGICAL SURVEY, P.O. BOX 25286, DENVER, COLORADO 80225  
A FOLDER DESCRIBING TOPOGRAPHIC MAPS AND SYMBOLS IS AVAILABLE ON REQUEST

