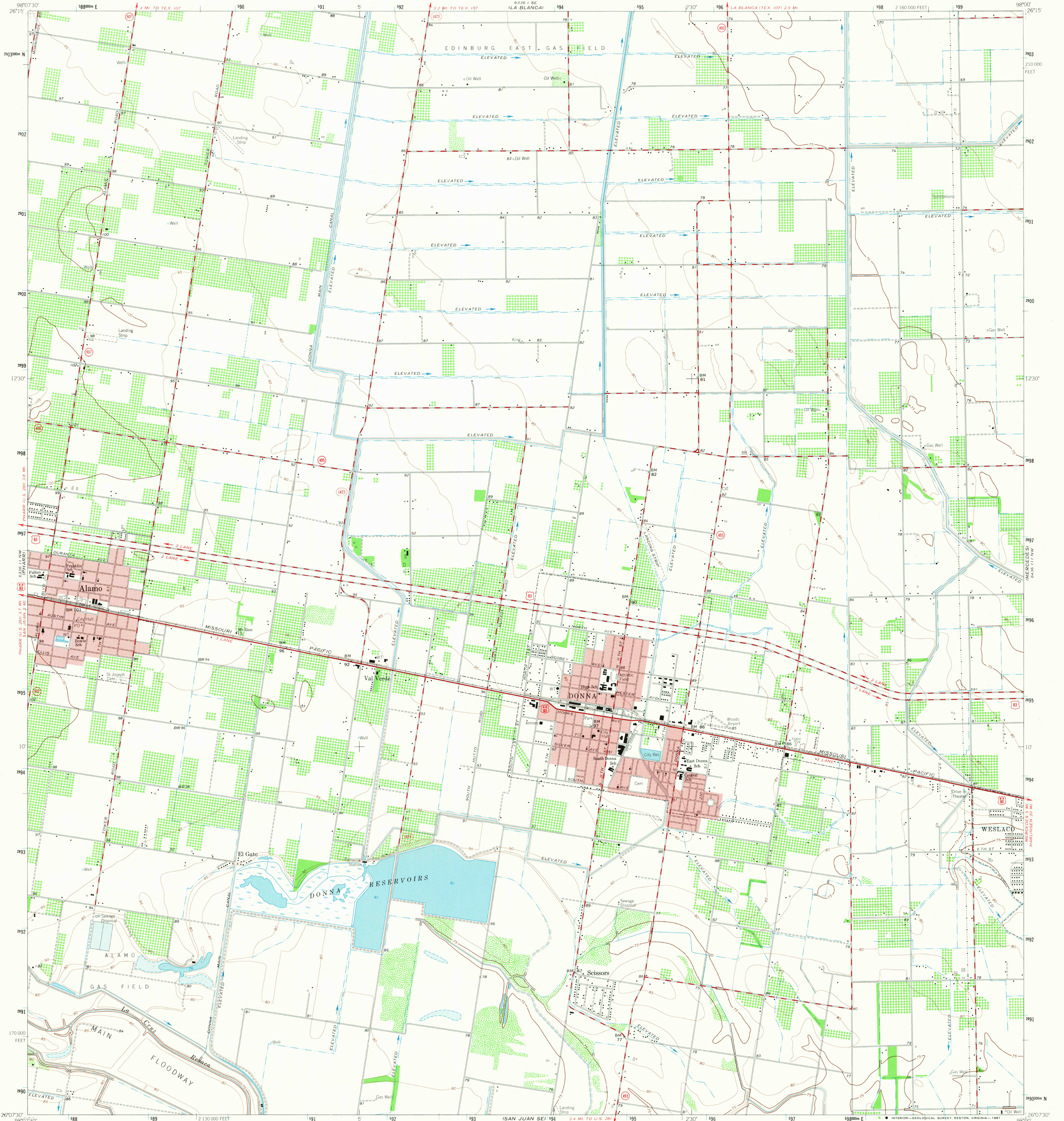


6.361 1/2 SW
EDINBURG

UNITED STATES
DEPARTMENT OF THE INTERIOR
GEOLOGICAL SURVEY

DONNA QUADRANGLE
TEXAS—HIDALGO CO.
7.5 MINUTE SERIES (TOPOGRAPHIC)

6.361 1/2 SW
EDINBURG

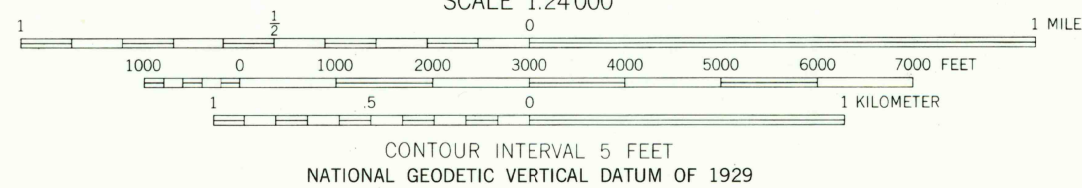
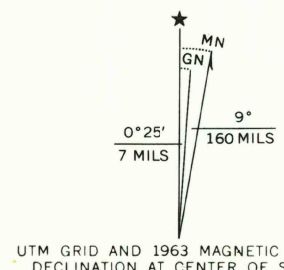


Mapped, edited, and published by the Geological Survey
Control by USGS and USC&GS

Planimetry by photogrammetric methods from aerial photographs
taken 1961. Topography by planetable surveys 1963

Polyconic projection 1927 North American datum
10,000 foot grid based on Texas coordinate system, south zone
1000-meter Universal Transverse Mercator grid ticks,
zone 14, shown in blue

Red tint indicates areas in which only landmark buildings are shown
To place on the Predicted North American Datum 1983
move the projection lines 33 meters south and
28 meters east as shown by dashed corner ticks



THIS MAP COMPLIES WITH NATIONAL MAP ACCURACY STANDARDS
FOR SALE BY U. S. GEOLOGICAL SURVEY, DENVER, COLORADO 80225, OR RESTON, VIRGINIA 22092
A FOLDER DESCRIBING TOPOGRAPHIC MAPS AND SYMBOLS IS AVAILABLE ON REQUEST



2698-114

USGS
HISTORICAL FILE
NATIONAL MAPPING DIVISION

ROAD CLASSIFICATION
Heavy-duty ——— Light-duty ———
Medium-duty ——— Unimproved dirt ———
U.S. Route ——— State Route ———

DONNA, TEX.

N 2607.5—W 9800.7/5

1963

DMA 6336 II NE—SERIES V882

AUG 28 1981

1260