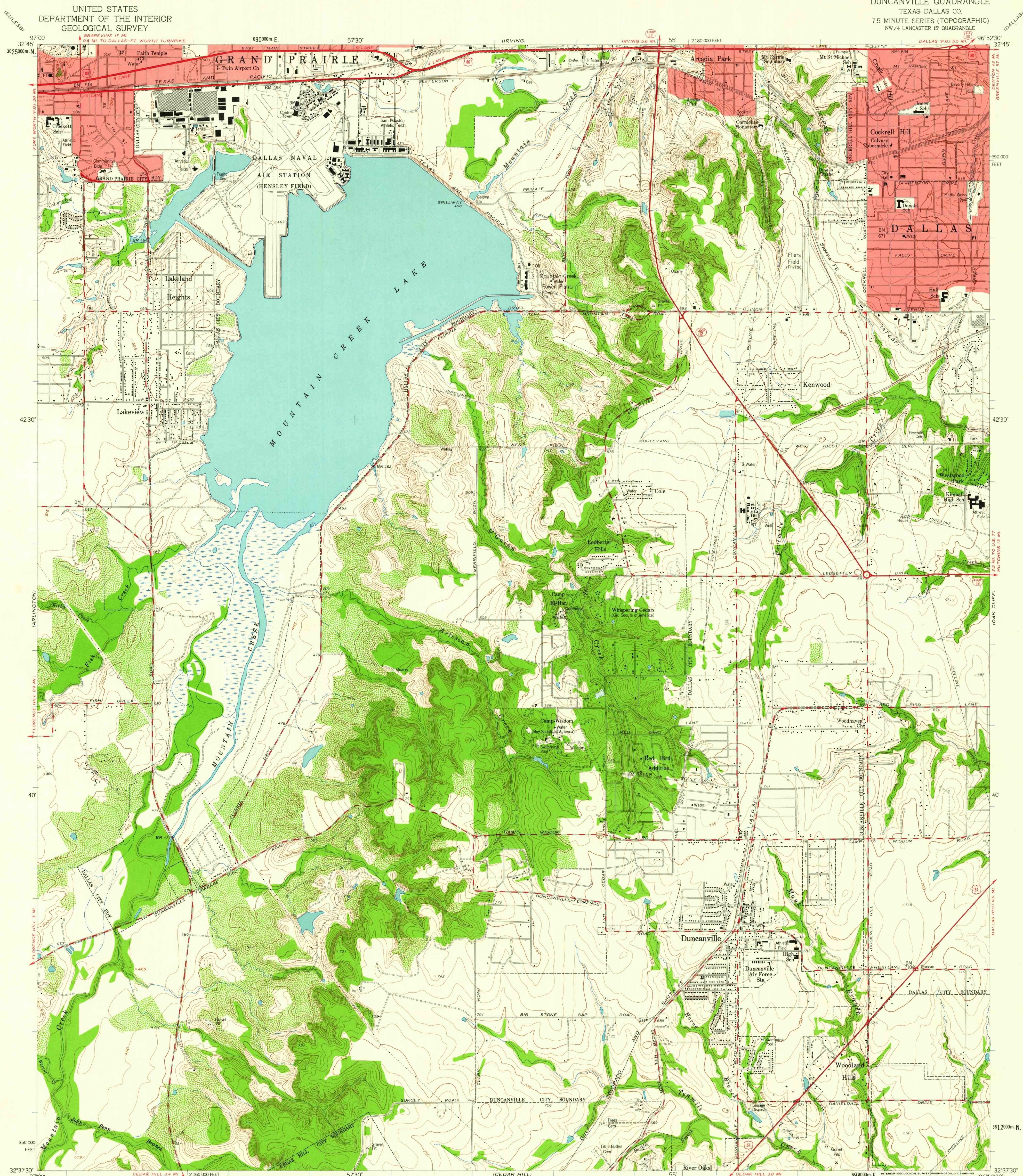


UNITED STATES
DEPARTMENT OF THE INTERIOR
GEOLOGICAL SURVEY

DUNCANVILLE QUADRANGLE
TEXAS-DALLAS CO.
7.5 MINUTE SERIES (TOPOGRAPHIC)
NW 1/4 LANCASTER 15 QUADRANGLE



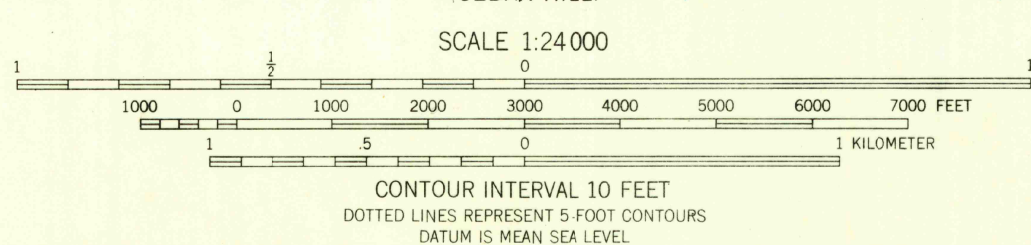
Mapped, edited, and published by the Geological Survey
Control by USGS and USC&GS

Topography from aerial photographs by photogrammetric methods
Aerial photographs taken 1956. Field check 1959

Polycyclic projection. 1927 North American datum
10,000-foot grid based on Texas coordinate system,
north central zone
1000-meter Universal Transverse Mercator grid ticks,
zone 14, shown in blue

Red tint indicates areas in which only
landmark buildings are shown

TRUE NORTH
MAGNETIC NORTH
APPROXIMATE MEAN
DECLINATION, 1959



THIS MAP COMPLIES WITH NATIONAL MAP ACCURACY STANDARDS
FOR SALE BY U.S. GEOLOGICAL SURVEY, DENVER 25, COLORADO OR WASHINGTON 25, D.C.
A FOLDER DESCRIBING TOPOGRAPHIC MAPS AND SYMBOLS IS AVAILABLE ON REQUEST

ROAD CLASSIFICATION
Heavy-duty ——— Light-duty ———
Medium-duty ——— Unimproved dirt ———
U.S. Route ——— State Route ———



QUADRANGLE LOCATION

U.S.G.S. FILE COPY
DUNCANVILLE, TEX.
NW 1/4 LANCASTER 15 QUADRANGLE
N3237.5-W9652.5/7.5
1959

FEB -2 1961

2940