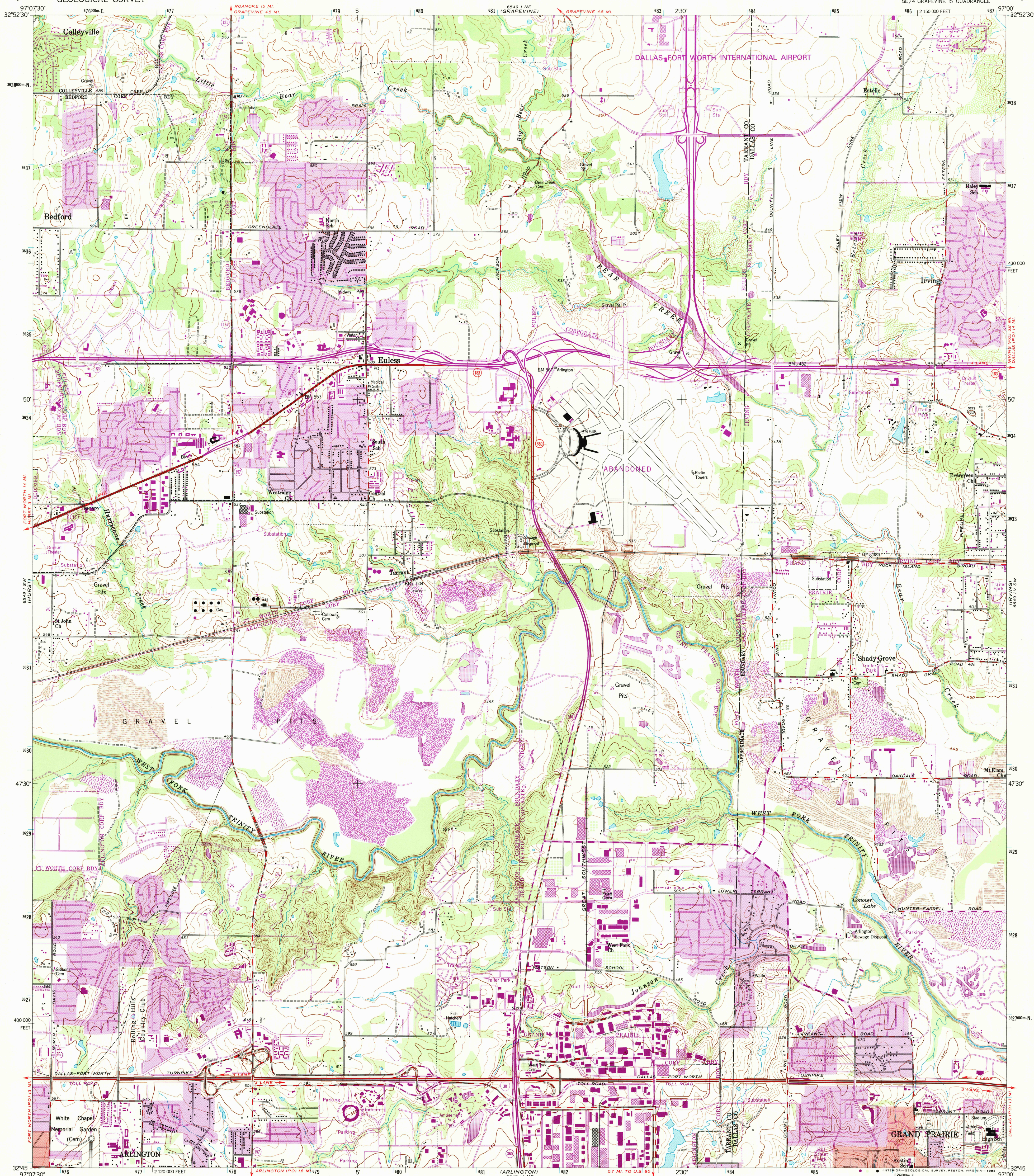


UNITED STATES
DEPARTMENT OF THE INTERIOR
GEOLOGICAL SURVEY

EULESS QUADRANGLE
TEXAS
7.5 MINUTE SERIES (TOPOGRAPHIC)
SE/4 GRAPEVINE 15' QUADRANGLE



Mapped, edited, and published by the Geological Survey

Control by USGS and NOS/NOAA

Topography by photogrammetric methods from aerial photographs

Aerial photographs taken 1956. Field checked 1959

Polyconic projection. 10,000-foot grid ticks based on Texas coordinate system,

north central zone. 1000-meter Universal Transverse Mercator grid ticks,

zone 14, shown in blue. 1927 North American Datum

To place on the predicted North American Datum 1983 move the projection lines

10 meters south and 27 meters east as shown by dashed corner ticks

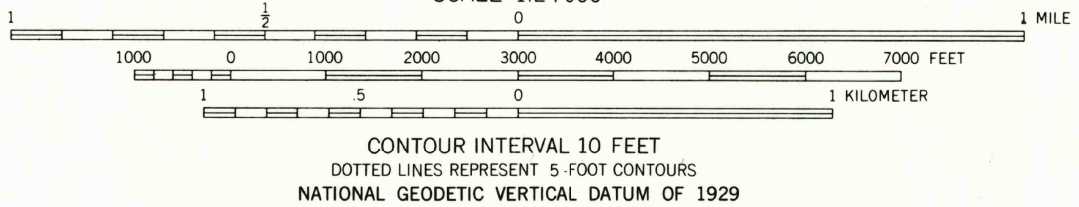
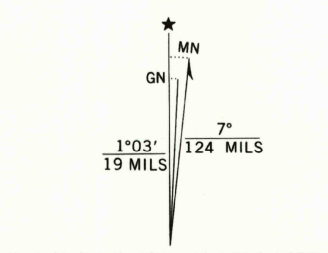
Red tint indicates area in which only landmark buildings are shown

Revisions shown in purple and woodland compiled from

aerial photographs taken 1978 and other sources. This

information not field checked. Map edited 1981

Purple tint indicates extension of urban areas



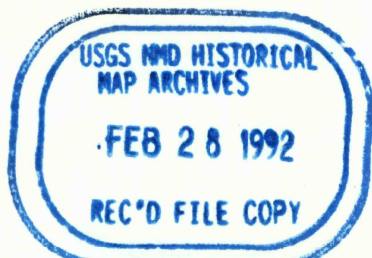
THIS MAP COMPLIES WITH NATIONAL MAP ACCURACY STANDARDS
FOR SALE BY U. S. GEOLOGICAL SURVEY, DENVER, COLORADO 80225, OR RESTON, VIRGINIA 22092
A FOLDER DESCRIBING TOPOGRAPHIC MAPS AND SYMBOLS IS AVAILABLE ON REQUEST



QUADRANGLE LOCATION

3297-441

ROAD CLASSIFICATION
Primary highway, all weather, hard surface
Secondary highway, all weather, hard surface
Light-duty road, all weather, improved surface
Unimproved road, fair or dry weather
Interstate Route
U. S. Route
State Route



EULESS, TEX.
SE/4 GRAPEVINE 15' QUADRANGLE
N3245-W9700/7.5

1959
PHOTOREVISED 1981
DMA 6549 1 SE-SERIES V882