

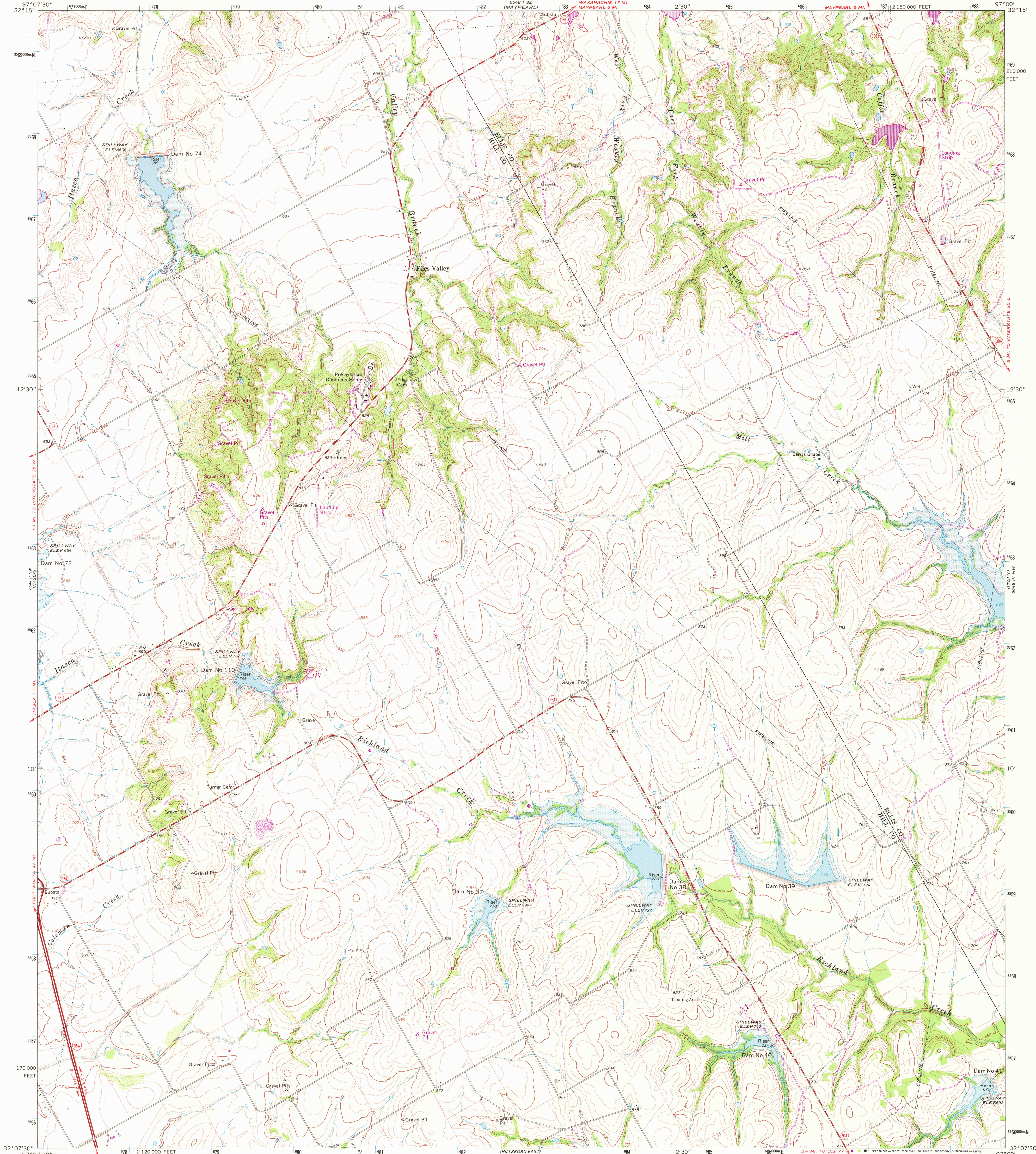
6648 14 SW
(6648 14 SW)

UNITED STATES
DEPARTMENT OF THE INTERIOR
GEOLOGICAL SURVEY



FILES VALLEY QUADRANGLE
TEXAS
7.5 MINUTE SERIES (TOPOGRAPHIC)

6648 14 SW
(6648 14 SW)



Mapped, edited, and published by the Geological Survey
Control by USGS and USC&GS

Topography by photogrammetric methods from aerial
photographs taken 1964. Field checked 1965

Polyconic projection. 1927 North American datum
10,000-foot grid based on Texas coordinate system, north central zone

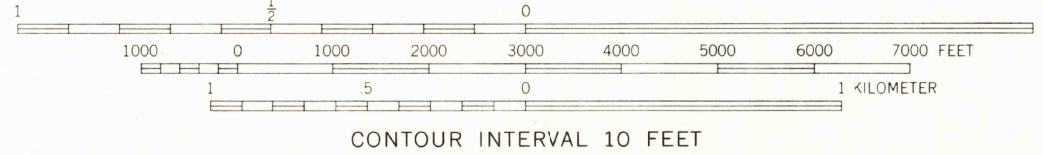
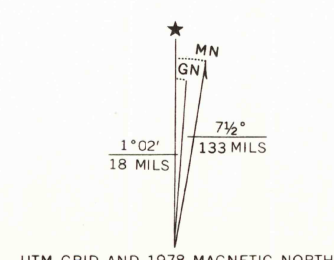
1000-meter Universal Transverse Mercator grid ticks,
zone 14, shown in blue

Fine red dashed lines indicate selected fence lines

Areas covered by dashed light-blue pattern are subject
to controlled inundation

Revisions shown in purple and woodland compiled from
aerial photographs taken 1976 and other source data.

This information not field checked. Map edited 1978



CONTOUR INTERVAL 10 FEET
NATIONAL GEODETIC VERTICAL DATUM OF 1929



QUADRANGLE LOCATION

ROAD CLASSIFICATION
Heavy-duty Light-duty
Medium-duty Unimproved dirt

Interstate Route State Route

USGS
Historical File
Topographic Division

FILES VALLEY, TEX.
N3207.5—W9700.47.5

1965
PHOTO REVISSED 1978
AMS 6548 II NE—SERIES V882

APR 11 1978

THIS MAP COMPLIES WITH NATIONAL MAP ACCURACY STANDARDS
FOR SALE BY U. S. GEOLOGICAL SURVEY, DENVER, COLORADO 80225, OR RESTON, VIRGINIA 22092
A FOLDER DESCRIBING TOPOGRAPHIC MAPS AND SYMBOLS IS AVAILABLE ON REQUEST

3297-114