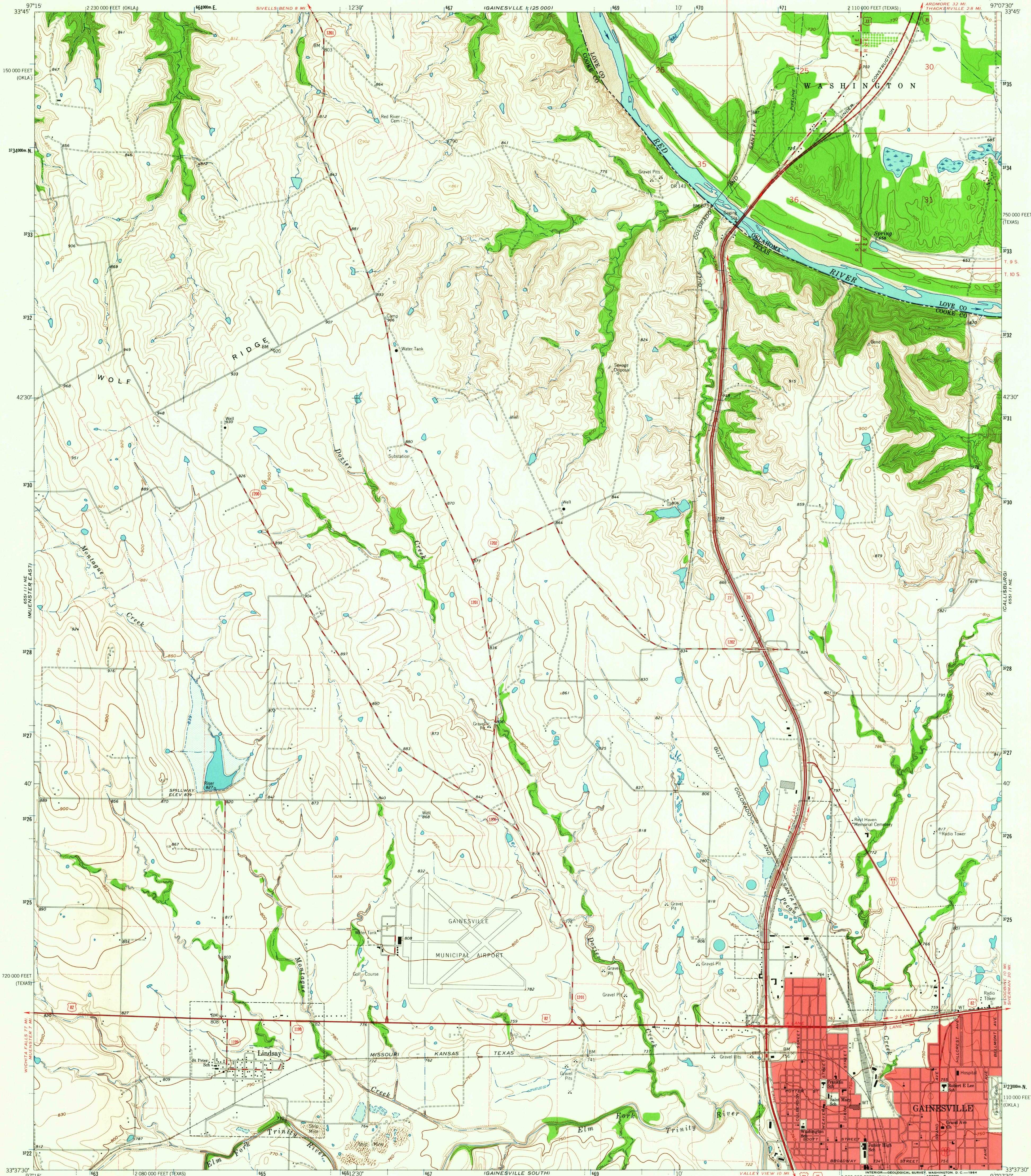


GAINESVILLE
1:125,000

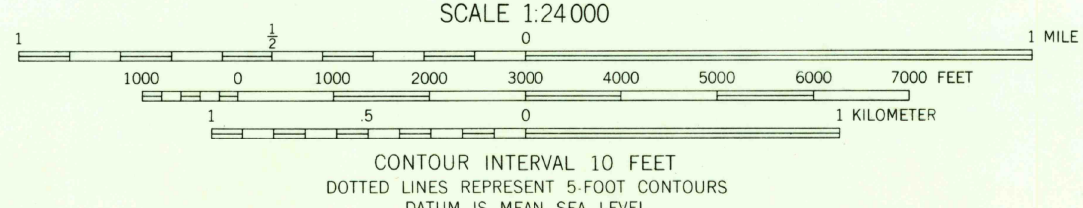
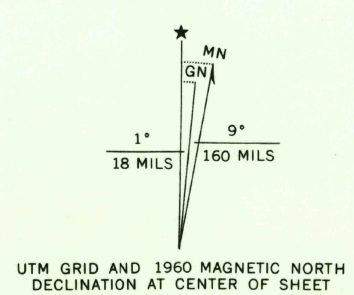
UNITED STATES
DEPARTMENT OF THE INTERIOR
GEOLOGICAL SURVEY

GAINESVILLE NORTH QUADRANGLE
TEXAS-OKLAHOMA
7.5 MINUTE SERIES (TOPOGRAPHIC)

GAINESVILLE
1:125,000



Mapped, edited, and published by the Geological Survey
Control by USGS and USC&GS
Topography by photogrammetric methods from aerial
photographs taken 1957 Field checked 1960
Polyconic projection. 1927 North American datum
10,000-foot grid based on Texas coordinate system, north central zone
and Oklahoma coordinate system, south zone
1000-meter Universal Transverse Mercator grid ticks,
zone 14, shown in blue
Red tint indicates area in which only landmark buildings are shown
Fine red dashed lines indicate selected fence lines
Area covered by dashed light blue pattern is subject
to controlled inundation



USGS
Historical File
Topographic Division



ROAD CLASSIFICATION

Heavy-duty	Light-duty
Medium-duty	Unimproved dirt

Interstate Route U.S. Route State Route

GAINESVILLE NORTH, TEX.-OKLA.
N3337.5-W9707.5/7.5

1960
AMS 6551 11 NW-SERIES V882

2430

MAR 10 1964