

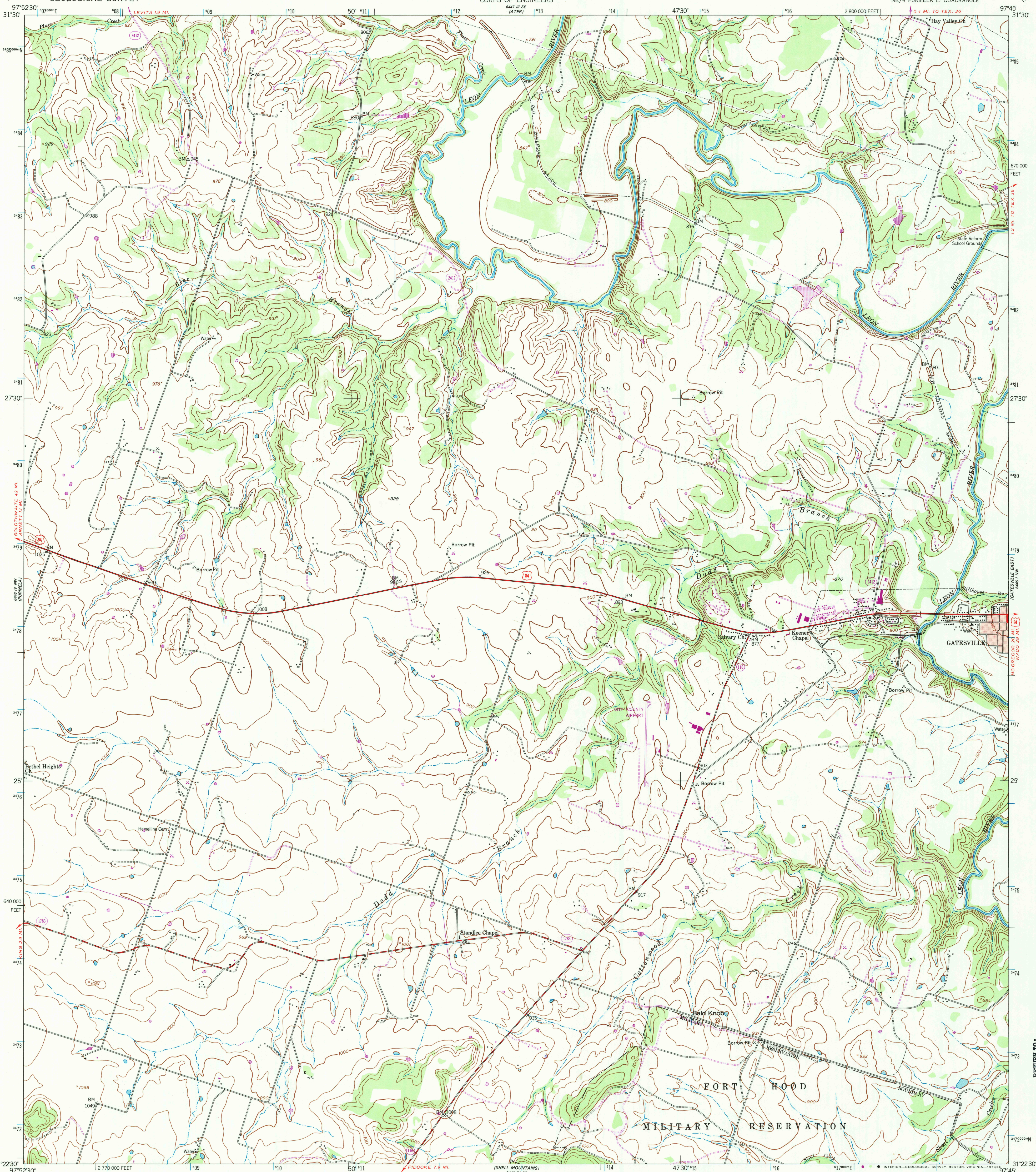
Map 1:500,000
6446 IV NW
CORRESPONDING

UNITED STATES
DEPARTMENT OF THE INTERIOR
GEOLOGICAL SURVEY

UNITED STATES
DEPARTMENT OF THE ARMY
CORPS OF ENGINEERS

GATESVILLE WEST QUADRANGLE
TEXAS-CORYELL CO.
7.5 MINUTE SERIES (TOPOGRAPHIC)
NE/4 PURMELA 15' QUADRANGLE

Map 1:500,000
6446 IV NW
CORRESPONDING



Map 1:500,000
6446 IV NW
CORRESPONDING

Mapped by the Army Map Service
Published for civil use by the Geological Survey
Control by USGS, USC&GS, and USCE

Topography from aerial photographs by photogrammetric methods
Aerial photographs taken 1947. Planimetric detail revised from
aerial photographs taken 1955-1956. Field check 1957

Polycyclic projection. 1927 North American datum
10,000-foot grid based on Texas coordinate system,
central zone

1000-meter Universal Transverse Mercator grid ticks,
zone 14, shown in blue

Red tint indicates area in which only
landmark buildings are shown

There may be private inholdings within the boundaries of
the National or State reservations shown on this map

UTM GRID AND 1979 MAGNETIC NORTH
DECLINATION AT CENTER OF SHEET

0° 37' 11 MILS
7 1/4°

SCALE 1:24,000

CONTOUR INTERVAL 20 FEET
NATIONAL GEODETIC VERTICAL DATUM OF 1929

1 000 2000 3000 4000 5000 6000 7000 FEET
1 5 10 15 20 KILOMETER

THIS MAP COMPLIES WITH NATIONAL MAP ACCURACY STANDARDS
FOR SALE BY U. S. GEOLOGICAL SURVEY, DENVER, COLORADO 80225, OR RESTON, VIRGINIA 22092
A FOLDER DESCRIBING TOPOGRAPHIC MAPS AND SYMBOLS IS AVAILABLE ON REQUEST

ROAD CLASSIFICATION

Primary highway, all weather, hard surface	Light-duty road, all weather, improved surface
Secondary highway, all weather, hard surface	Unimproved road, fair or dry weather

Interstate Route U. S. Route State Route

TEXAS

QUADRANGLE LOCATION

GATESVILLE WEST, TEX.

NE/4 PURMELA 15' QUADRANGLE
N3122.5-W9745/7.5

1957
PHOTOREVISED 1979
AMS 6446 IV NE-SERIES V882

RETURN TO:
USGS AND HISTORICAL MAP ARCHIVES

6/29/84