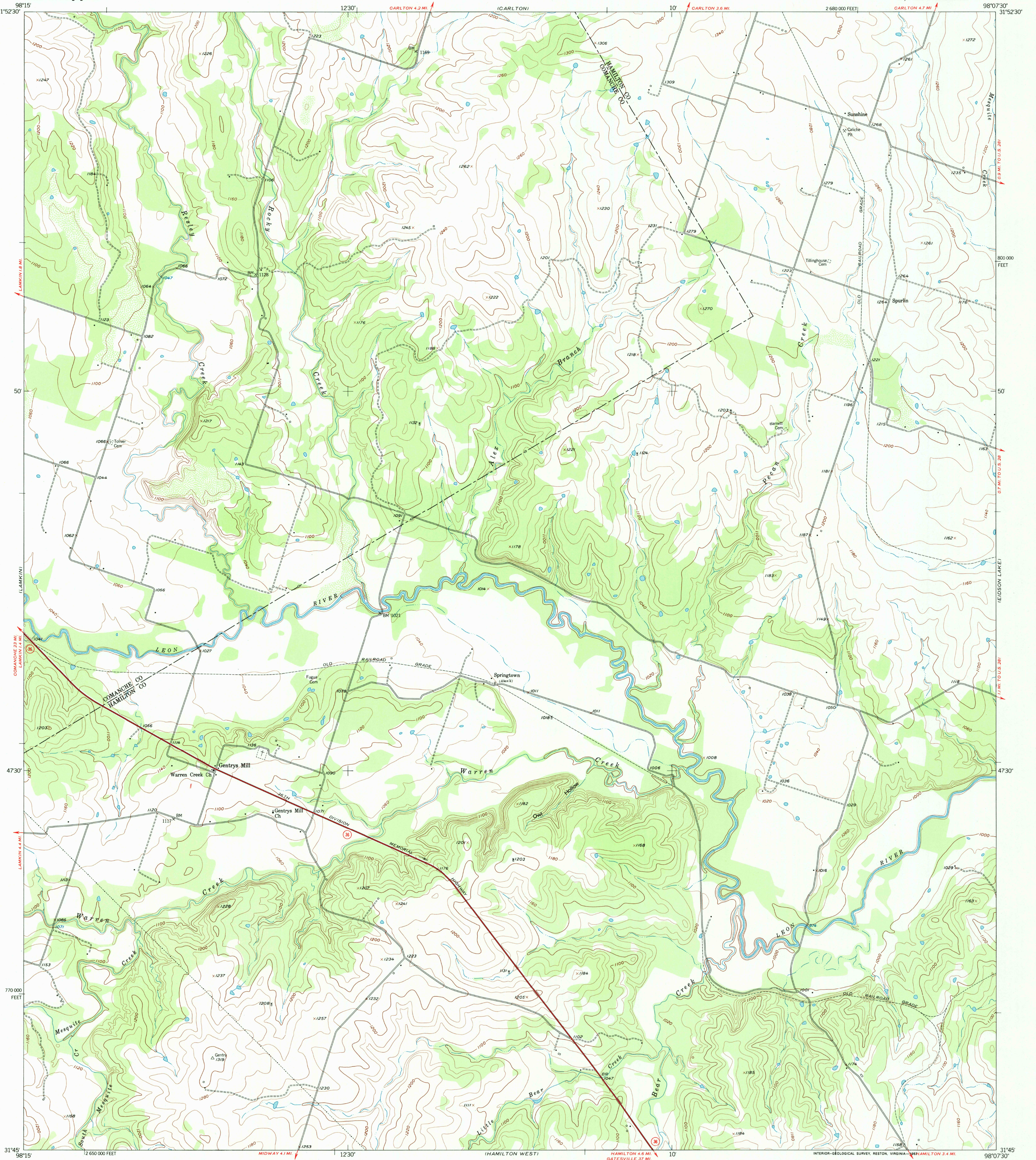


EDNA HILL



U.S. DEPARTMENT OF THE INTERIOR
U.S. GEOLOGICAL SURVEY

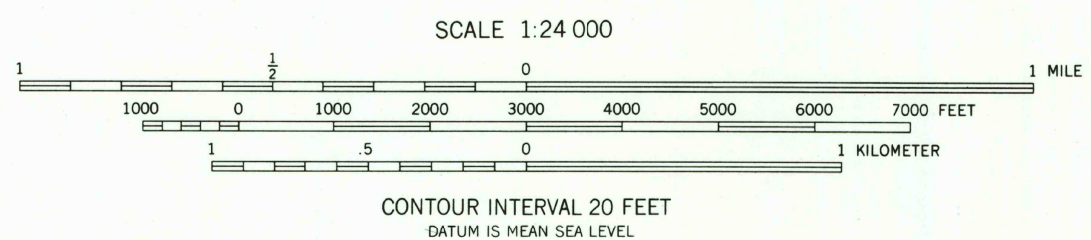
GENTRYS MILL QUADRANGLE
TEXAS
7.5 MINUTE SERIES (TOPOGRAPHIC)
SW 1/4 HICO 15 QUADRANGLE



(POTTSVILLE)

Mapped, edited, and published by the Geological Survey
Control by USGS and USC&GS
Topography from aerial photographs by ER-55 plotter
Aerial photographs taken 1955. Field check 1956
Polyconic projection. 1927 North American datum
10,000-foot grid based on Texas coordinate system,
central zone

TRUE NORTH
MAGNETIC NORTH
APPROXIMATE MEAN
DECLINATION, 1956



THIS MAP COMPLIES WITH NATIONAL MAP ACCURACY STANDARDS
FOR SALE BY U.S. GEOLOGICAL SURVEY, P.O. BOX 25286, DENVER, COLORADO 80225
A FOLDER DESCRIBING TOPOGRAPHIC MAPS AND SYMBOLS IS AVAILABLE ON REQUEST



RECEIVED
DEC 31 1998
USGS NMD
HISTORICAL MAP ARCHIVES

ROAD CLASSIFICATION
Heavy duty ——— Light duty ———
Unimproved dirt ———
State Route

GENTRYS MILL, TEX.
SW 1/4 HICO 15 QUADRANGLE
N3145—W9807.5/7.5
1956

