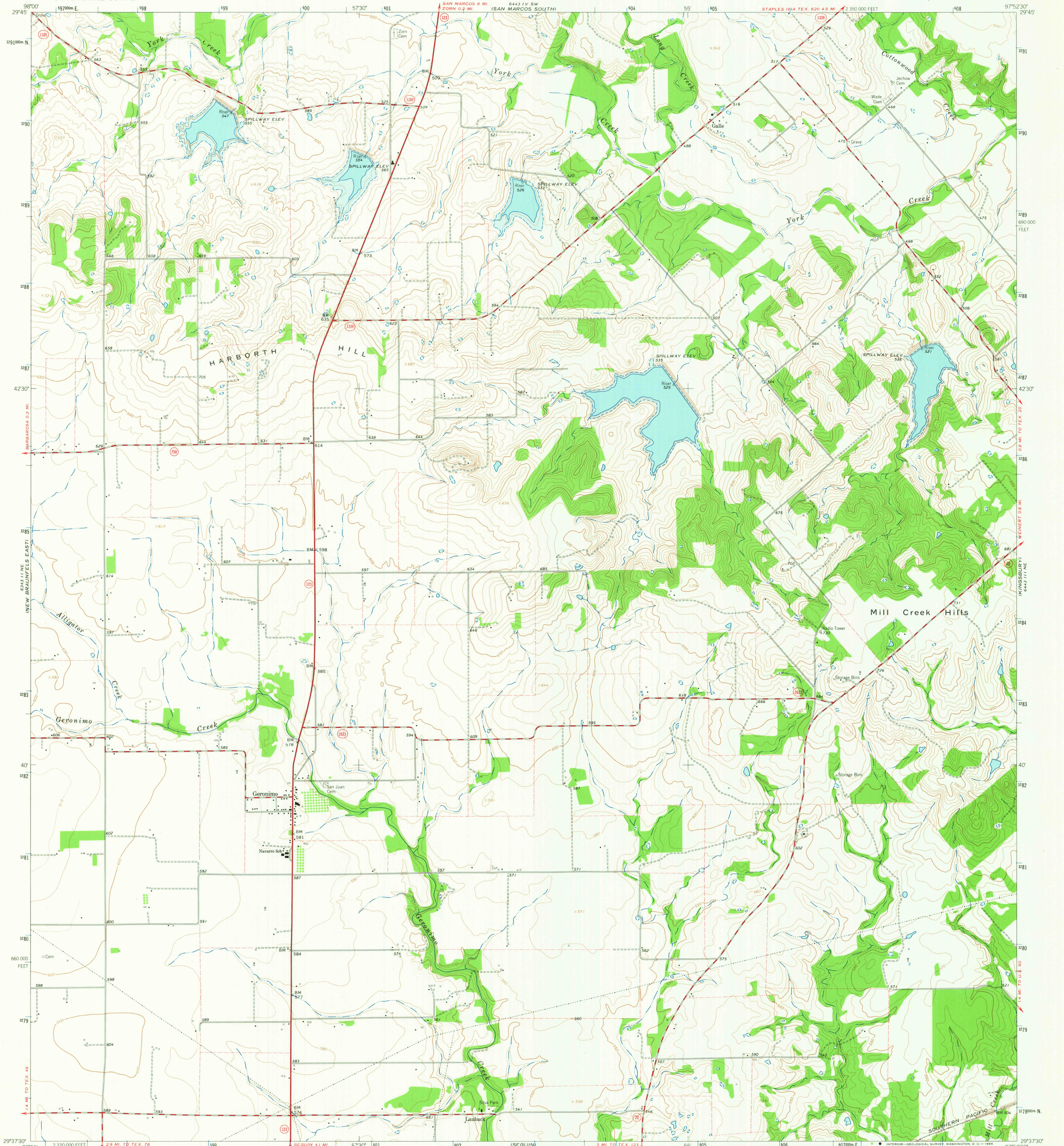
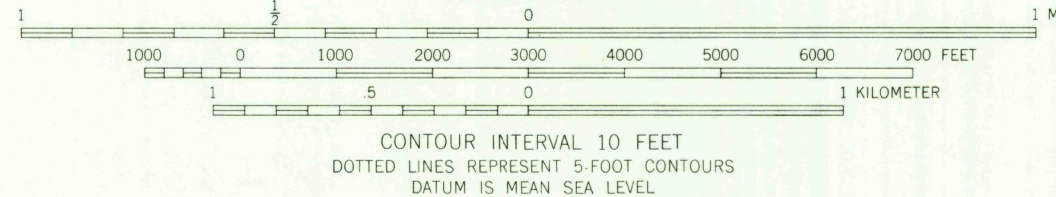
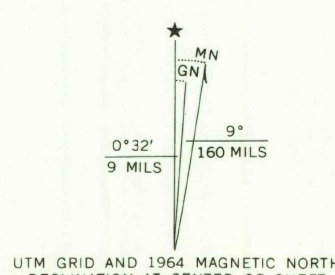


UNITED STATES
DEPARTMENT OF THE INTERIOR
GEOLOGICAL SURVEY

GERONIMO QUADRANGLE
TEXAS-GUADALUPE CO.
7.5 MINUTE SERIES (TOPOGRAPHIC)
NW 4 SEQUIN 15 QUADRANGLE



Maped by the Army Map Service
Edited and published by the Geological Survey
Control by USGS, USC&GS, and USCE
Topography by photogrammetric methods from aerial
photographs taken 1958. Field checked by USGS 1964
Polyconic projection. 1927 North American datum
10 000-foot grid based on Texas coordinate system, south central zone
1000 meter Universal Transverse Mercator grid ticks,
zone 14, shown in blue
Fine red dashed lines indicate selected fence lines
Areas covered by dashed light-blue pattern are subject
to controlled inundation



THIS MAP COMPLIES WITH NATIONAL MAP ACCURACY STANDARDS
FOR SALE BY U. S. GEOLOGICAL SURVEY, DENVER, COLORADO 80225, OR WASHINGTON, D. C. 20242
A FOLDER DESCRIBING TOPOGRAPHIC MAPS AND SYMBOLS IS AVAILABLE ON REQUEST

USGS
Historical File
Topographic Division



U.S.G.S.
FILE COPY
TOPOGRAPHIC DIVISION

ROAD CLASSIFICATION
Heavy-duty ——— Light-duty ———
Medium-duty ——— Unimproved dirt ———
State Route

GERONIMO, TEX.
NW 4 SEQUIN 15 QUADRANGLE
N2937.5 - W9752.5/7.5
1964

AMS 6443 111 NW-SERIES Y882

2325
MAR 3 1966