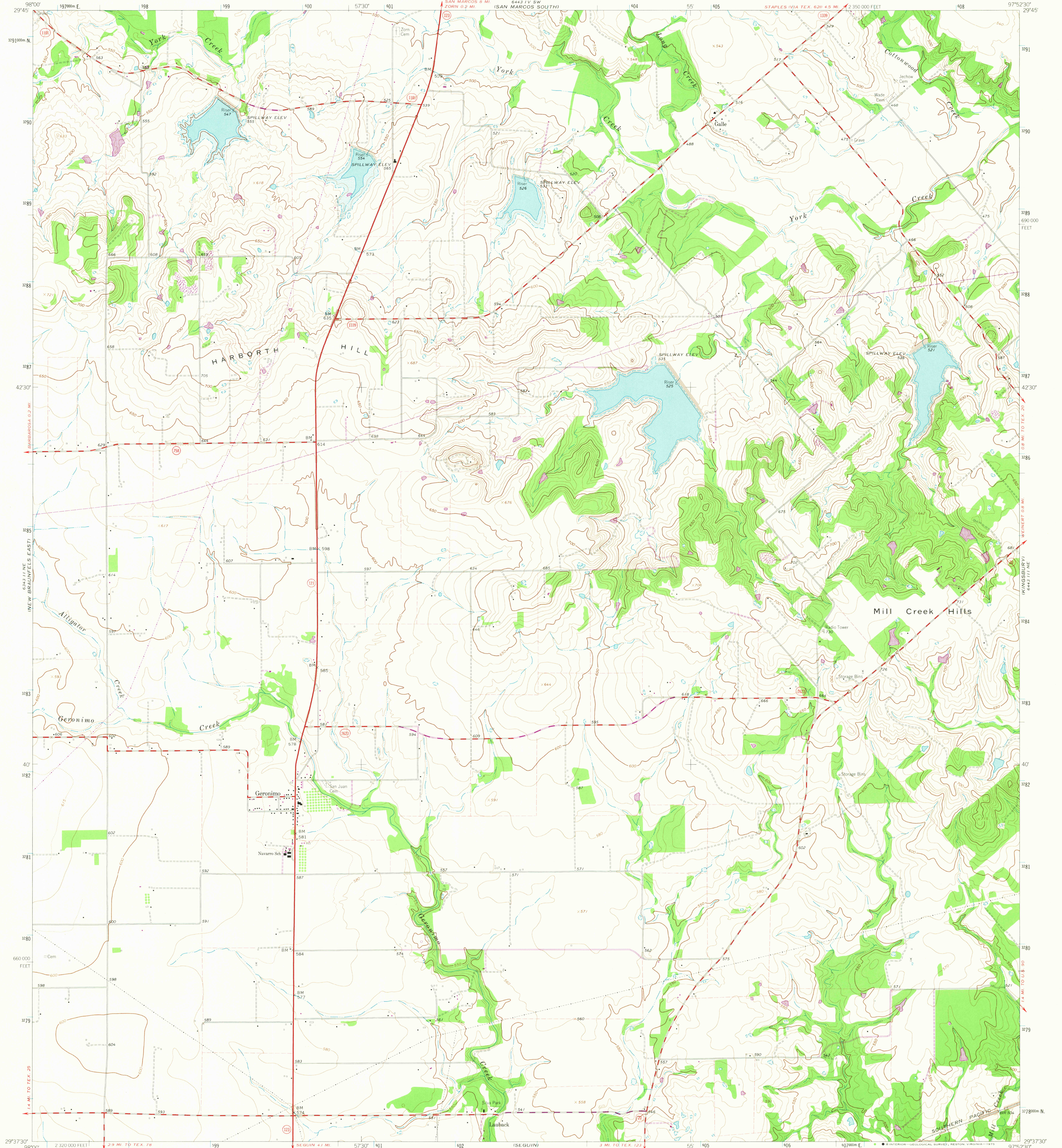


UNITED STATES
DEPARTMENT OF THE INTERIOR
GEOLOGICAL SURVEY

GERONIMO QUADRANGLE
TEXAS-GUADALUPE CO.
7.5 MINUTE SERIES (TOPOGRAPHIC)



Mapped by the Army Map Service
Edited and published by the Geological Survey

Control by USGS, NOS/NOAA, and USCE

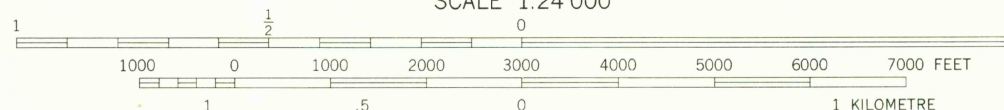
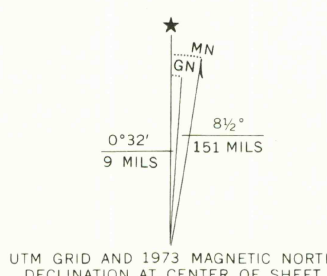
Topography by photogrammetric methods from aerial
photographs taken 1958. Field checked by USGS 1964

Polyconic projection. 1927 North American datum
10,000-foot grid based on Texas coordinate system, south central zone
1000 metre Universal Transverse Mercator grid ticks,
zone 14, shown in blue

Fine red dashed lines indicate selected fence lines

Areas covered by dashed light blue pattern are subject
to controlled inundation

Revisions shown in purple compiled by the Geological Survey from
aerial photographs taken 1973. This information not field checked



CONTOUR INTERVAL 10 FEET
DOTTED LINES REPRESENT 5 FOOT CONTOURS
NATIONAL GEODETIC VERTICAL DATUM OF 1929



QUADRANGLE LOCATION

ROAD CLASSIFICATION	
Primary highway, hard surface	Light-duty road, hard or improved surface
Secondary highway, hard surface	Unimproved road
Interstate Route	U. S. Route
	State Route

THIS MAP COMPLIES WITH NATIONAL MAP ACCURACY STANDARDS
FOR SALE BY U. S. GEOLOGICAL SURVEY, DENVER, COLORADO 80225, OR RESTON, VIRGINIA 22092
A FOLDER DESCRIBING TOPOGRAPHIC MAPS AND SYMBOLS IS AVAILABLE ON REQUEST

USGS
HISTORICAL FILE
TOPOGRAPHIC DIVISION

GERONIMO, TEX.
N2937.5-W9752.5/7.5

1964
PHOTOREVISED 1973
AMS 6443 111 NW-SERIES V882

JUL 10 1975