

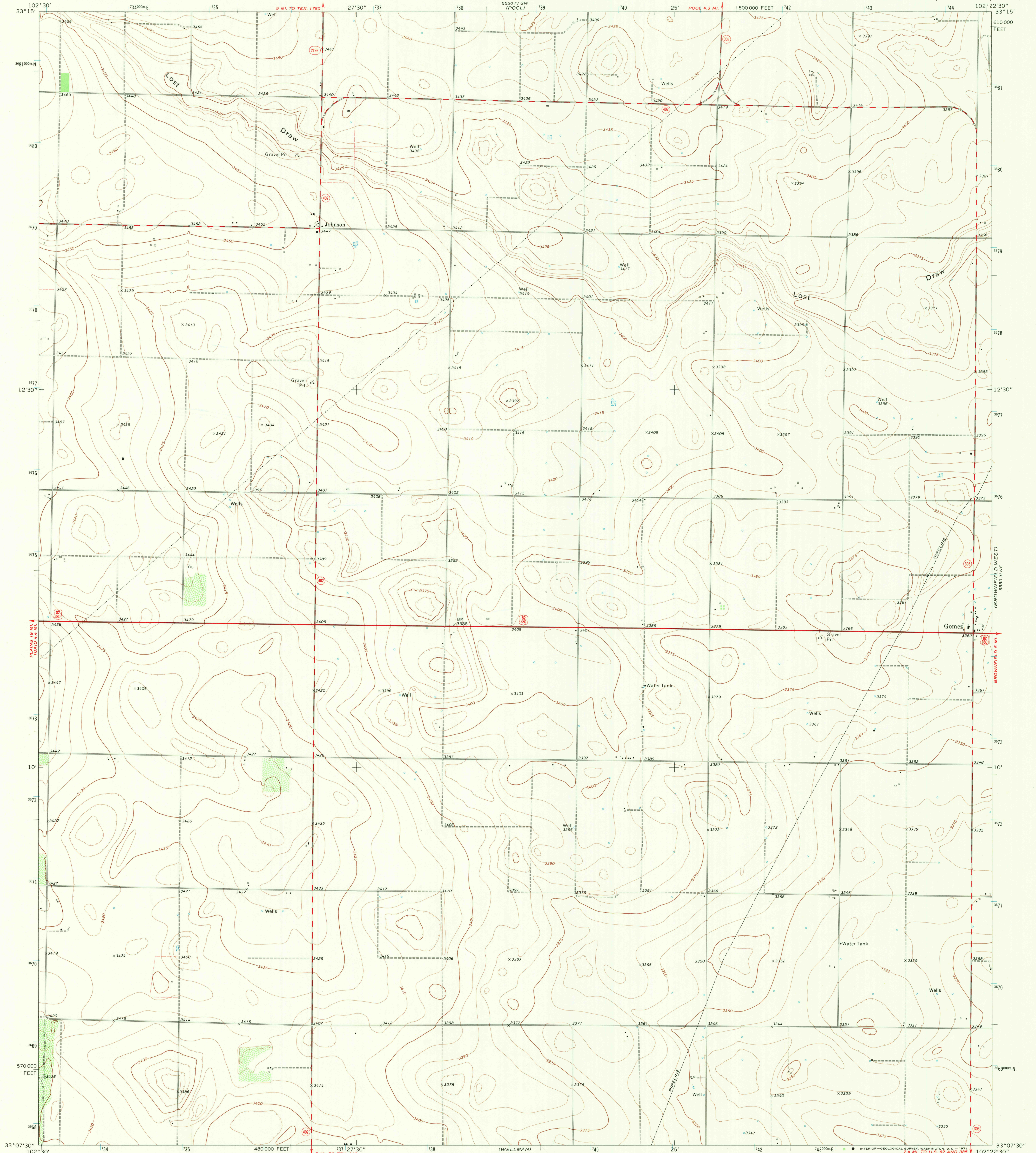
5800' SE
(PLAINS 1 SE)

UNITED STATES
DEPARTMENT OF THE INTERIOR
GEOLOGICAL SURVEY

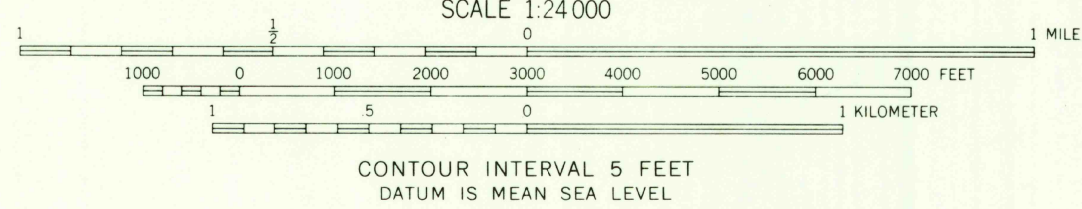
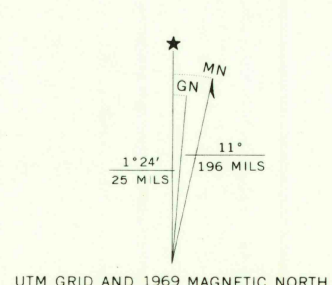
STATE OF TEXAS
TEXAS WATER DEVELOPMENT BOARD

GOMEZ QUADRANGLE
TEXAS—TERRY CO.
7.5 MINUTE SERIES (TOPOGRAPHIC)

5800' SE
(GUADALUPE SE)



Mapped, edited, and published by the Geological Survey
Control by USGS and USC&GS
Planimetry by photogrammetric methods from aerial photographs
taken 1968. Topography by planetable surveys 1969
Polyconic projection. 1927 North American datum
10,000-foot grid based on Texas coordinate system,
north central zone
1000-meter Universal Transverse Mercator grid ticks,
zone 13, shown in blue
Fine red dashed lines indicate selected fence lines



ROAD CLASSIFICATION
Primary highway, all weather, hard surface
Secondary highway, all weather, hard surface
Light-duty road, all weather, improved surface
Unimproved road, fair or dry weather
U. S. Route
State Route

THIS MAP COMPLIES WITH NATIONAL MAP ACCURACY STANDARDS
FOR SALE BY U. S. GEOLOGICAL SURVEY, DENVER, COLORADO 80225, OR WASHINGTON, D. C. 20242
A FOLDER DESCRIBING TOPOGRAPHIC MAPS AND SYMBOLS IS AVAILABLE ON REQUEST

GOMEZ, TEX. AUG 13 1977
N3307.5—W10222.5/7.5

1969
AMS 5550 III NW—SERIES 1968
HISTORICAL FILE
TOPOGRAPHIC DIVISION

2065